

PROJECT: 0958 CFE: Modernization Works of the Rectifier Substations of Line 1 of the STC "Metro".

SECTOR:
Electricity

SUBSECTOR:
Transmission / Distribution

STAGE ANALYZED:
Bidding

YEAR OF UPDATE:
2024

[Guide to read this datasheet](#) 

Project's sustainability summary: The project consists of modernization work on the rectifier substations of Line 1 of the "Metro" Collective Transportation System in Mexico City, with the aim of ensuring the availability of electrical power and the transportation service with safety conditions in operation and maintenance.

 **ECONOMIC AND FINANCIAL SUSTAINABILITY**
EXAMPLE OF GOOD PRACTICES

Sustainability criteria	NA	T1	T2	T3
Economic and social returns				
Creation of employment opportunities and boost local productivity				
Financial sustainability of assets				
Value for money principle				
Detailed risk analysis				
Infrastructure asset maintenance and optimal use				
Sustainability incentives				

 **ENVIRONMENTAL SUSTAINABILITY AND CLIMATE RESILIENCE**
EXAMPLE OF GOOD PRACTICES

Sustainability criteria	NA	T1	T2	T3
Greenhouse gas emissions				
Climate risks, resilience and disaster risk management				
Environmental Impact of the Project				
Control and monitoring of pollutants				
Efficient use of resources and recycling strategies				
Efficient use of energy and renewable sources				

 **SOCIAL SUSTAINABILITY**
EXAMPLE OF GOOD PRACTICES

Sustainability criteria	NA	T1	T2	T3
Reduction of poverty and access to basic services				
Integration of people with disabilities or special needs				
Effects of the project in the security of the region and in the health of workers and nearby communities				
Compliance with human and labor rights				
Gender inclusion and women's economic empowerment through the project				

 **INSTITUTIONAL SUSTAINABILITY**
EXAMPLE OF GOOD PRACTICES

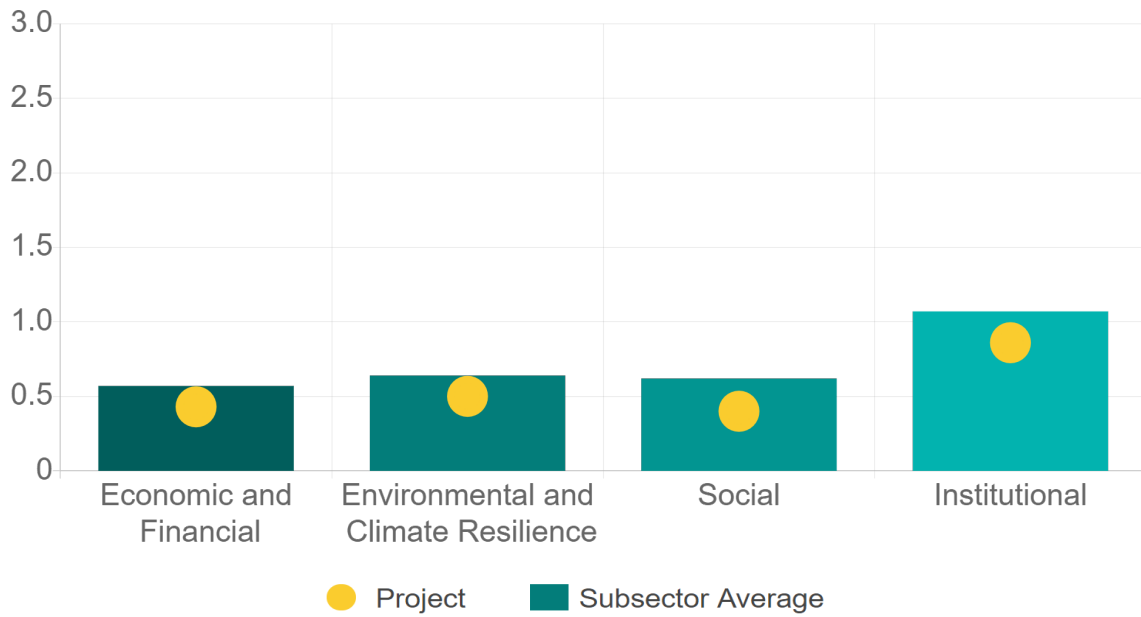
Sustainability criteria	NA	T1	T2	T3
Alignment with national and international strategies				
Sectoral and institutional integration				
Transparency of the process				
Corruption and mitigation process				
Legal requirements and compliance with social and environmental policies				
Training development in aspects related to sustainability				
Pre-existing conditions and their monitoring				

Source of this project: Tender site CFE - CFE-0003-CACOA-0013-2024 / Call for Public Tender - CFE-0003-CACOA-0013-2024 / Set of requirements / Annex 2 01 Project description / Preliminary Specifications / Catalog of concepts / Contract Template / Economic Annexes Format / Formats of the economic annexes / Additional documents



Comparison of this project vs other projects of the same subsector

(Number of projects included: 2)



Methodological framework defined by the Inter-American Development Bank (IDB)

[View](#)



PROJECT: 0958 CFE: Modernization Works of the Rectifier Substations of Line 1 of the STC "Metro".

SECTOR:
Electricity

SUBSECTOR:
Transmission / Distribution

STAGE ANALYZED:
Bidding

YEAR OF UPDATE:
2024

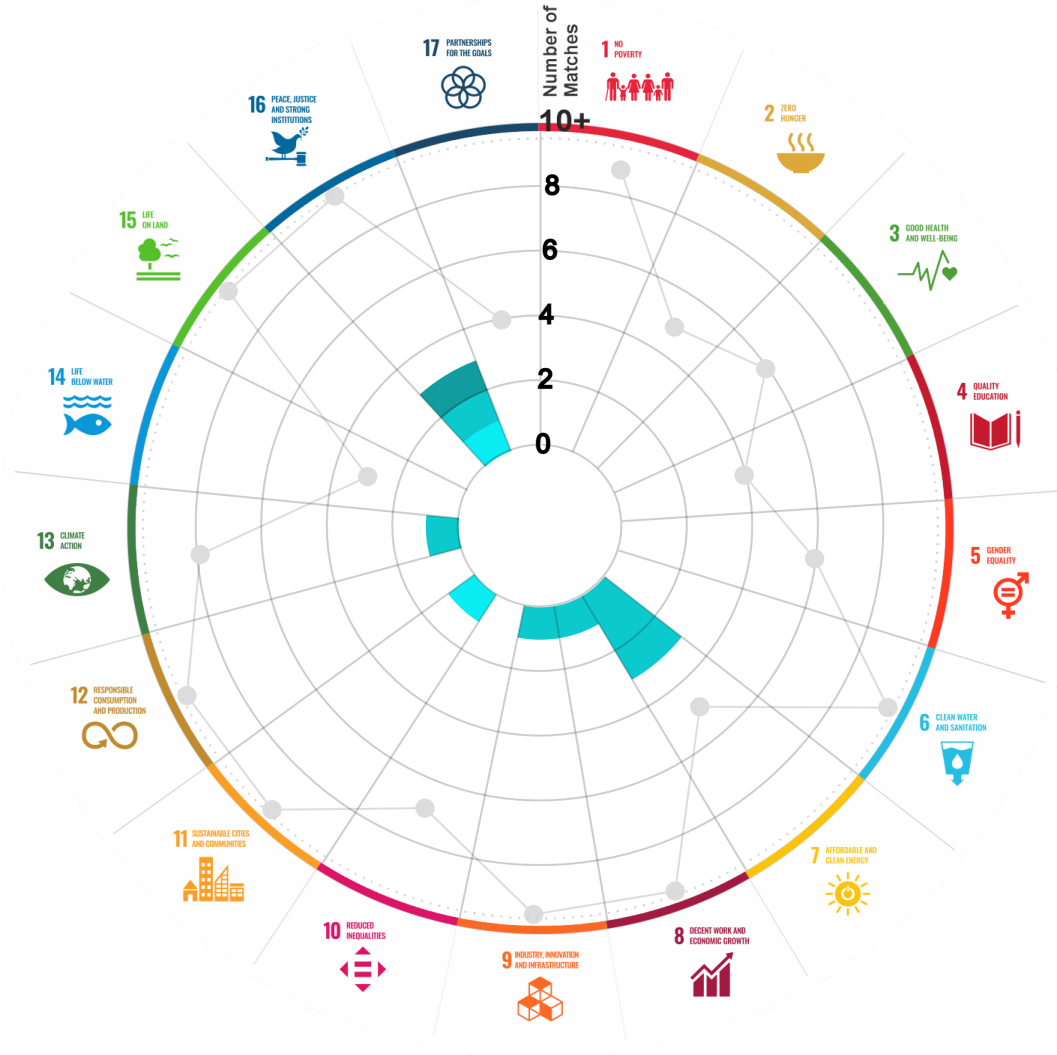
This section aims to present the potential alignment of the infrastructure project with the 17 Sustainable Development Goals (SDGs) of the 2030 Agenda. The relevance of this exercise resides in that it provides information to the actors of the infrastructure ecosystem for decision-making in investment that considers and promotes sustainable development.

Reading guide [View](#)

1. ALIGNMENT BY SUBSECTOR



2. ALIGNMENT BY SDG



3. ALIGNMENT BY CRITERIA AND TARGETS

[View](#)

Explanation of the alignment of the sustainability criteria and the SDGs.

[View](#)



The tonality of the bars represents the level of detail of the information available from the IDB criteria and its potential alignment for each SDG, based on the scale: N.A., TIER 1, TIER 2 or TIER 3.

Number of times the project information coincides with the alignment of the IDB criteria and the SDGs.

Approximate reference to the number of maximum alignments a project can have between the IDB criteria and the targets of the SDGs.

P R O J E C T

MODERNIZATION WORKS ON THE RECTIFIER SUBSTATIONS OF LINE 1 OF THE "METRO" MASS TRANSIT SYSTEM, IN MEXICO CITY.

SECTOR: ELECTRICITY

SUBSECTOR: TRANSMISSION / DISTRIBUTION

Type of Investment: Brownfield

Short Name of the Project: NEW 0958 CFE: Modernization Works on the Rectification Substations of Line 1 of the STC "Metro"

Contract Currency:
Mexican Pesos MXN

Estimated Investment MXN
N.A.

Estimated Investment USD
N.A.

Exchange rate (USD/MXN) used by the Ministry of Finance for the economic plan 2024 \$ 17.1

DESCRIPTION

The project consists of modernization works on the rectifier substations of line 1 of the "Metro" Mass Transportation System in Mexico City, and includes the following works, supplies and services: works necessary to dismantle the existing equipment, the modernization of the traction and power equipment, as well as their corresponding traction wiring, the civil works necessary for the implementation of this equipment, the traction logic and the command and control system of line 1.

Contract Scope: Modernization, Equipment, Installation

Type of Project: Public

Selection Process: International Open Tender

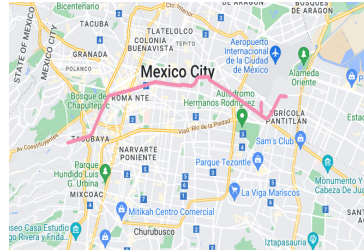
Term: _____

Type of Contract: Public Works

Payment Source: Budgetary

Asset (s): Rectification Substation 17, Traction Niche 30, Stand 13, Testing Platform 1

GEOLOCATION



SPONSOR



Entity

Comisión Federal de Electricidad

Department

Subdirección de Contratación y Servicios

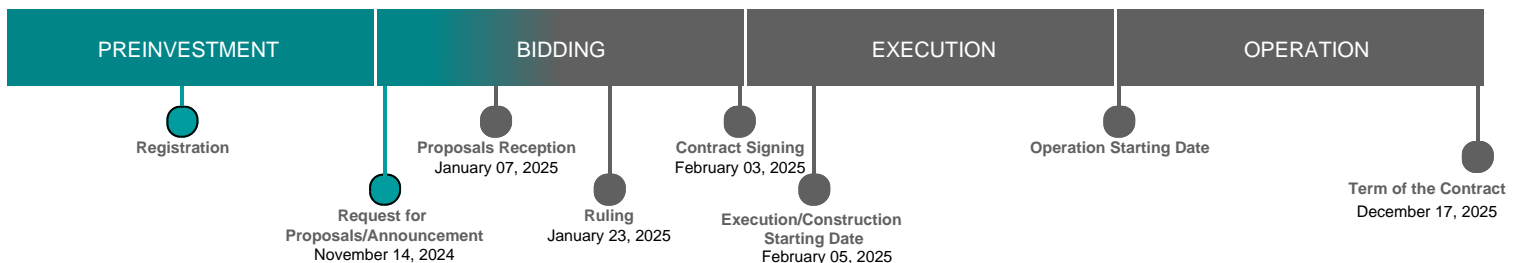
Contact

Mtra. Erika Alejandra Enciso Macías

E-mail

gcia.contratacionesdeobra@cfe.mx

TIMELINE



Email: proyectosmexico@banobras.gob.mx



SHCP
SECRETARÍA DE HACIENDA
Y CRÉDITO PÚBLICO

BANOBRAS
BANCO NACIONAL DE OBRAS
Y SERVICIOS PÚBLICOS S.N.C.