

PROJECT: 0396 CFE: Transmission Line System 1720 Distribution Valley of Mexico (2nd Phase)

SECTOR:
Electricity

SUBSECTOR:
Transmission / Distribution

STAGE ANALYZED:
Bidding

YEAR OF UPDATE:
2024

[Guide to read this datasheet](#) 

Project's sustainability summary: Substation with a voltage of 230/23 kV, with a total capacity of 120 MVA of transformation and transmission line with a voltage of 230 kV. The bidding rules provide detailed technical specifications for the development of the project, however, not enough elements were found to be able to carry out a more in-depth analysis of sustainability practices.



ECONOMIC AND FINANCIAL SUSTAINABILITY

EXAMPLE OF GOOD PRACTICES

CFE will carry out this project under the PIDIREGAS scheme (Project for Productive Infrastructure Investment with Deferred Registration in Public Expenditure), which are developed in order to have the necessary infrastructure to ensure timely and sufficient supply of goods and services exclusively produced by the State, and which are aligned with sectoral and territorial strategies such as the National Development Plan 2019-2024 and the Energy Sector Program 2020-2024.

Sustainability criteria

	NA	T1	T2	T3
Economic and social returns		█		
Creation of employment opportunities and boost local productivity				
Financial sustainability of assets		█		
Value for money principle				
Detailed risk analysis		█		
Infrastructure asset maintenance and optimal use		█	█	
Sustainability incentives				



ENVIRONMENTAL SUSTAINABILITY AND CLIMATE RESILIENCE

EXAMPLE OF GOOD PRACTICES

Sustainability criteria

	NA	T1	T2	T3
Greenhouse gas emissions		█		
Climate risks, resilience and disaster risk management				
Impacts on biodiversity and native flora and fauna in the region		█	█	
Environmental Impact of the Project		█	█	
Control and monitoring of pollutants		█		
Efficient use of resources and recycling strategies				
Efficient use of energy and renewable sources				
Preservation or enhancement of public spaces				



SOCIAL SUSTAINABILITY

EXAMPLE OF GOOD PRACTICES

Sustainability criteria

	NA	T1	T2	T3
Reduction of poverty and access to basic services		█		
Integration of communities and other interested parties				
Integration of people with disabilities or special needs		█		
Effects of the project in the security of the region and in the health of workers and nearby communities		█	█	
Compliance with human dn labor rights		█	█	
Cultural heritage and indigenous people				
Gender inclusion and women's economic empowerment through the project				
Equal distribution of benefits and compensations to communities				



INSTITUTIONAL SUSTAINABILITY

EXAMPLE OF GOOD PRACTICES

Sustainability criteria

	NA	T1	T2	T3
Alignment with national and international strategies		█	█	
Sectoral and institutional integration		█	█	
Transparency of the process		█	█	
Corruption and mitigation process		█		
Legal requirements and compliance with social and environmental policies		█	█	
Training development in aspects related to sustainability				
Pre-existing conditions and their monitoring				

Source of this project: Business plan of the Federal Electricity Commission 2023-2027 / PEF 2024 - PIDIREGAS - Marco Legal y Conceptualización / Tender microsite CFE-0003-CACOA-0005-2023 / Call Official Gazette of the Federation CFE-0003-CACOA-0005-2023 / Requirements / Technical specifications Volume I - Substations / Technical specifications Volume I - Substations 2/2

Comparison of this project vs other projects of the same subsector

(Number of projects included: 1)



Methodological framework defined by the Inter-American Development Bank (IDB)

[View](#)



PROJECT: 0396 CFE: Transmission Line System 1720 Distribution Valley of Mexico (2nd Phase)

SECTOR:
Electricity

SUBSECTOR:
Transmission / Distribution

STAGE ANALYZED:
Bidding

YEAR OF UPDATE:
2024

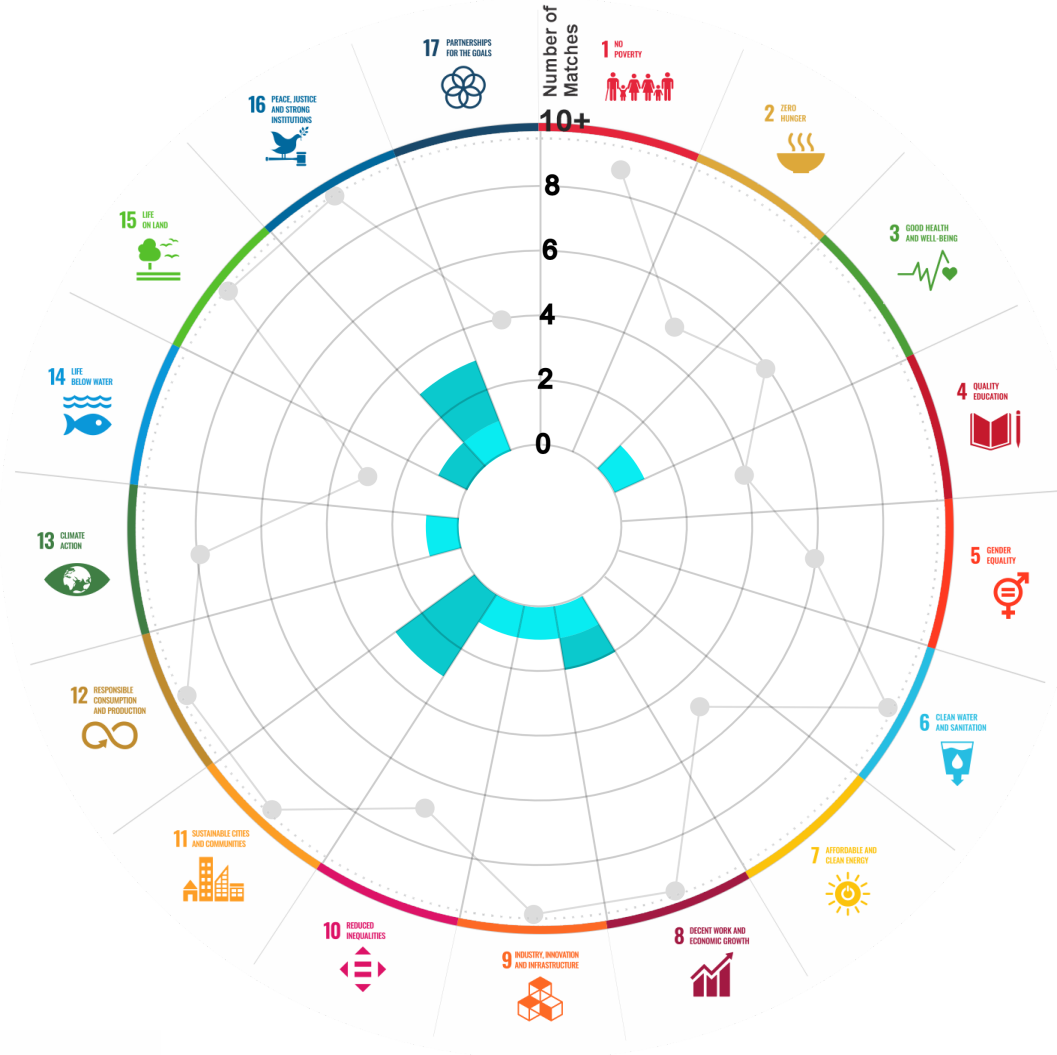
This section aims to present the potential alignment of the infrastructure project with the 17 Sustainable Development Goals (SDGs) of the 2030 Agenda. The relevance of this exercise resides in that it provides information to the actors of the infrastructure ecosystem for decision-making in investment that considers and promotes sustainable development.

Reading guide [View](#)

1. ALIGNMENT BY SUBSECTOR



2. ALIGNMENT BY SDG



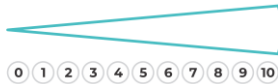
3. ALIGNMENT BY CRITERIA AND TARGETS

[View](#)



Explanation of the alignment of the sustainability criteria and the SDGs.

[View](#)



The tonality of the bars represents the level of detail of the information available from the IDB criteria and its potential alignment for each SDG, based on the scale: N.A., TIER 1, TIER 2 or TIER 3.

Number of times the project information coincides with the alignment of the IDB criteria and the SDGs.

Approximate reference to the number of maximum alignments a project can have between the IDB criteria and the targets of the SDGs.

PROJECT

EXECUTION OF WORKS 282: SUBSTATION AND TRANSMISSION LINE, IN THE STATE OF MEXICO.

SECTOR: ELECTRICITY

SUBSECTOR: TRANSMISSION / DISTRIBUTION

Type of Investment: Brownfield

Short Name of the Project: NEW 0396 CFE: Transmission Line System 1720 Distribution Valley of Mexico (2nd Phase)

Contract Currency:
Mexican Pesos MXN

Estimated Investment MXN
N.A.

Estimated Investment USD
N.A.

Exchange rate (USD/MXN) used by the Ministry of Finance for the economic plan 2023 \$ 20.6

DESCRIPTION

The project consists of the execution of the following works:

- 1 substation with a voltage of 230/23 kV, with a total capacity of 120 MVA of transformation, 18.0 MVar of compensation at the 23 kV voltage level and 2 feeders at the 230 kV level; and
- 1 transmission line with a voltage of 230 kV and a total length of 15.24 km-Circuit.

It includes within its scope the following concepts: supply of equipment and materials for permanent installation, development of engineering associated with the concepts of electromechanical and civil design, execution of electromechanical and civil works, performance of pre-operational tests, as well as the preparation, analysis and evaluation of the required studies (geotechnical studies, topographic surveys and resistivity) and the delivery of training and coaching programs.

Contract Scope: Design, Construction, Equipment, Installation

Type of Project: Public

Selection Process: International Open Tender

Term:

Type of Contract: Financed Public Works

Payment Source: Budgetary

Asset (s): Power Station /Electrical Substation, Electric Power Transmission Line

GEOLOCATION



SPONSOR



Entity

Comisión Federal de Electricidad

Department

Subdirección de Contratación y Servicios

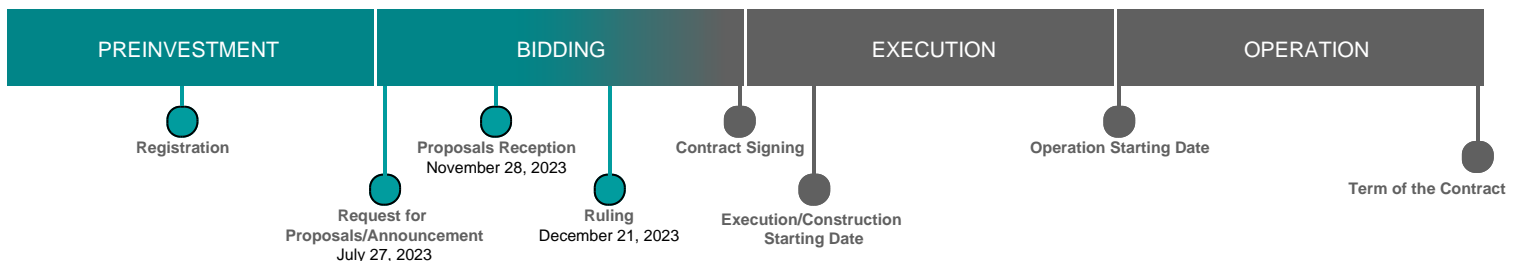
Contact

Mtra. Erika Alejandra Enciso Macías

E-mail

alejandra.encisom@cfe.mx

TIMELINE



Email: proyectosmexico@banobras.gov.mx



SHCP

SECRETARÍA DE HACIENDA
Y CRÉDITO PÚBLICO

BANOBRAS

BANCO NACIONAL DE OBRAS
Y SERVICIOS PÚBLICOS S.N.C.