

**PROJECT:** 0923 Modernization of the "Rumbo Nuevo" highway, in Tamaulipas

**SECTOR:**  
Transport

**SUBSECTOR:**  
Highways / bridges

**STAGE ANALYZED:**  
Bidding

**YEAR OF UPDATE:**  
2024

[Guide to read this datasheet](#) 

**Project's sustainability summary:** Rehabilitation of the highway called "Rumbo Nuevo", in the State of Tamaulipas, as well as its conservation, maintenance and operation for a period of 30 years, through a CAPP. The PNS has studies that guarantee the technical viability of the project, however, not enough elements were found to be able to carry out a more in-depth analysis of sustainability practices.



**ECONOMIC AND FINANCIAL SUSTAINABILITY**

**EXAMPLE OF GOOD PRACTICES**  
To ensure optimal maintenance of the infrastructure during the useful life of the project, the developer must have a periodic and routine conservation program, describing the execution periods and actions to be carried out in each year of the concession.

Sustainability criteria	NA	T1	T2	T3
Economic and social returns		█	█	
Creation of employment opportunities and boost local productivity				
Financial sustainability of assets		█	█	
Value for money principle				
Detailed risk analysis		█	█	
Cash flow transparency and creditworthiness		█	█	
Infrastructure asset maintenance and optimal use		█	█	█
Sustainability incentives				



**ENVIRONMENTAL SUSTAINABILITY AND CLIMATE RESILIENCE**

**EXAMPLE OF GOOD PRACTICES**

Sustainability criteria	NA	T1	T2	T3
Greenhouse gas emissions				
Climate risks, resilience and disaster risk management				
Impacts on biodiversity and native flora and fauna in the region				
Environmental Impact of the Project				
Control and monitoring of pollutants				
Efficient use of resources and recycling strategies				
Efficient use of energy and renewable sources				
Preservation or enhancement of public spaces				



**SOCIAL SUSTAINABILITY**

**EXAMPLE OF GOOD PRACTICES**

Sustainability criteria	NA	T1	T2	T3
Reduction of poverty and access to basic services				
Integration of communities and other interested parties				
Integration of people with disabilities or special needs		█		
Effects of the project in the security of the region and in the health of workers and nearby communities				
Compliance with human and labor rights		█		
Cultural heritage and indigenous people				
Gender inclusion and women's economic empowerment through the project				
Equal distribution of benefits and compensations to communities				



**INSTITUTIONAL SUSTAINABILITY**

**EXAMPLE OF GOOD PRACTICES**

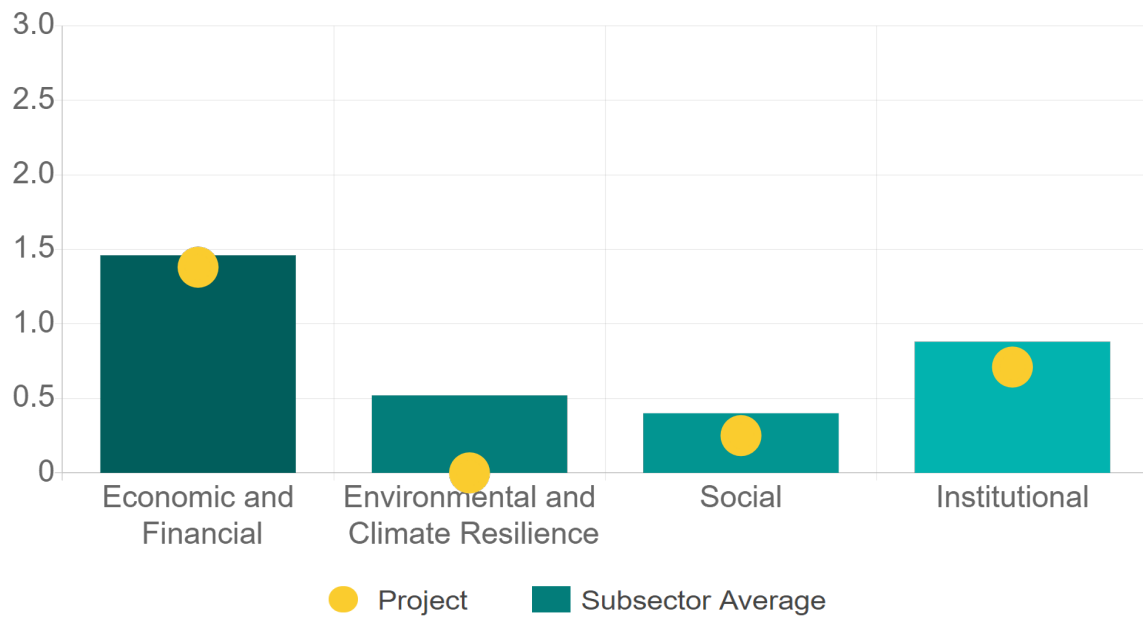
Sustainability criteria	NA	T1	T2	T3
Alignment with national and international strategies		█		
Sectoral and institutional integration				
Transparency of the process		█		
Corruption and mitigation process				
Legal requirements and compliance with social and environmental policies		█		
Training development in aspects related to sustainability				
Pre-existing conditions and their monitoring		█	█	

Source of this project: Bidding rules / International Public Tender Call - LPI-APP-001-2023 / Annexes and appendices to the Bidding Terms - LPI-APP-001-2023



### Comparison of this project vs other projects of the same subsector

(Number of projects included: 6)



Methodological framework defined by the Inter-American Development Bank (IDB)

[View](#)



**PROJECT:** 0923 Modernization of the "Rumbo Nuevo" highway, in Tamaulipas

**SECTOR:**  
Transport

**SUBSECTOR:**  
Highways / bridges

**STAGE ANALYZED:**  
Bidding

**YEAR OF UPDATE:**  
2024

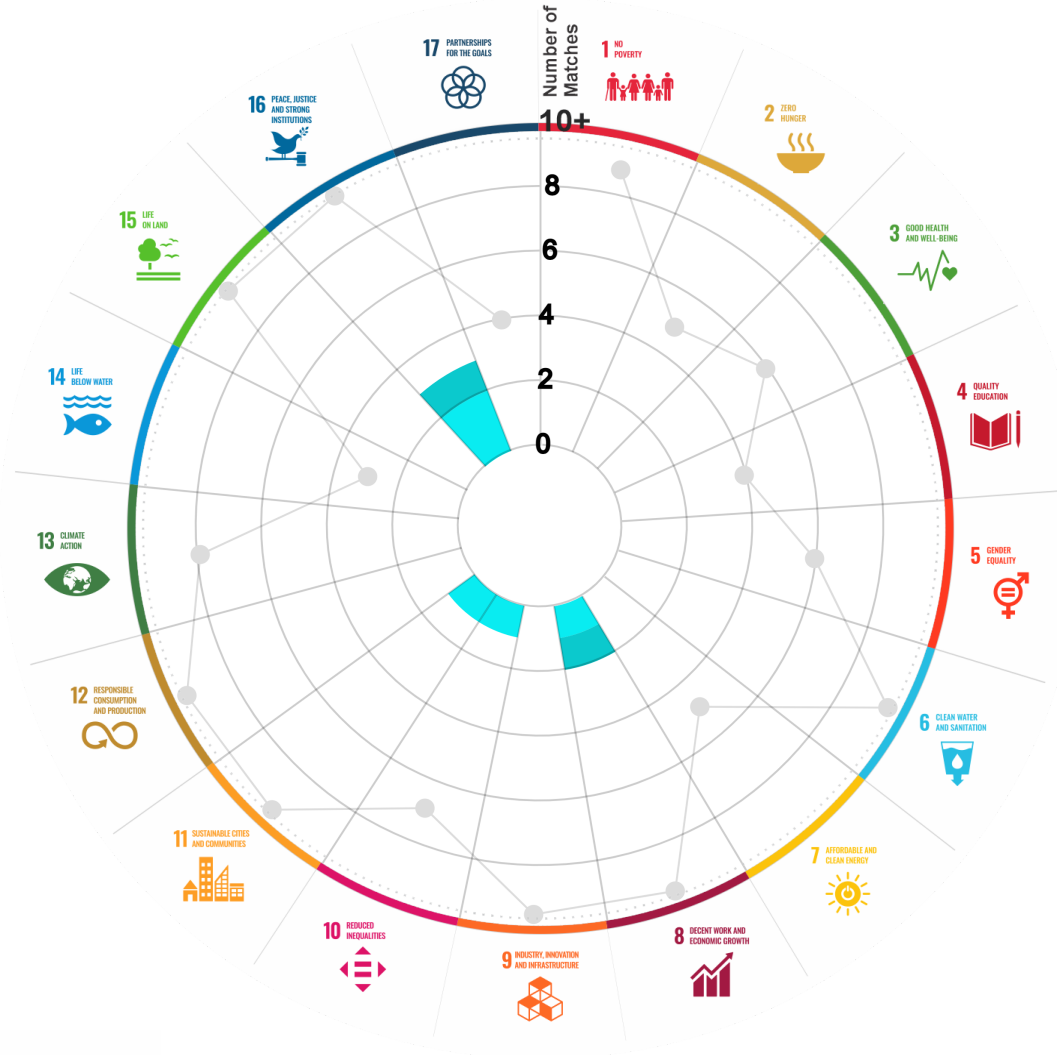
This section aims to present the potential alignment of the infrastructure project with the 17 Sustainable Development Goals (SDGs) of the 2030 Agenda. The relevance of this exercise resides in that it provides information to the actors of the infrastructure ecosystem for decision-making in investment that considers and promotes sustainable development.

Reading guide [View](#)

## 1. ALIGNMENT BY SUBSECTOR



## 2. ALIGNMENT BY SDG



### 3. ALIGNMENT BY CRITERIA AND TARGETS

[View](#)

Explanation of the alignment of the sustainability criteria and the SDGs.

[View](#)



The tonality of the bars represents the level of detail of the information available from the IDB criteria and its potential alignment for each SDG, based on the scale: N.A., TIER 1, TIER 2 or TIER 3.

Number of times the project information coincides with the alignment of the IDB criteria and the SDGs.

Approximate reference to the number of maximum alignments a project can have between the IDB criteria and the targets of the SDGs.

## P R O J E C T

MODERNIZATION OF THE JUAN CAPITÁN – EL CHIHUE HIGHWAY, CALLED “RUMBO NUEVO”, IN THE STATE OF TAMAULIPAS.

SECTOR: TRANSPORT  
SUBSECTOR: HIGHWAYS / BRIDGES

Type of Investment: Brownfield

Short Name of the Project: 0923 Modernization of the "Rumbo Nuevo" highway, in Tamaulipas

Contract Currency:  
Mexican Pesos MXN

Estimated Investment MXN  
\$ 1,447,028,170

Estimated Investment USD  
\$ 84,621,530

Exchange rate (USD/MXN) used by the Ministry of Finance for the economic plan 2024 \$ 17.1

### DESCRIPTION

The project consists of the design, construction and rehabilitation in order to provide the road service that allows the operation, maintenance and conservation of the state highway type A2 with a length of 37.0 km that begins at the junction of Federal Highway 85, and State Highway 9, and the Heavy Traffic Bypass of Cd. Victoria, and concludes by connecting with Federal Highway 101 before the Bridge over the Chihue River, in the Ejido San Antonio, for a period of 30 years, including auxiliary services and the set of all activities that the developer is obliged to and in exchange for obtaining the collection rights derived from the exploitation of the road.

**Contract Scope:** Design, Construction, Modernization, Operation, Maintenance, Conservation

Type of Project: Public / Private

Selection Process: International Open Tender

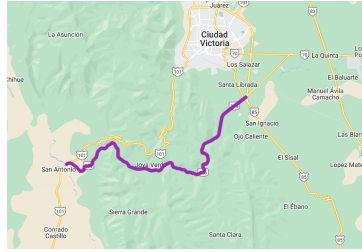
Term: 30 years

Type of Contract: State PPP

Payment Source: Project revenues / Rate

**Asset (s):** Highway 37 KM-A2

### GEOLOCATION



### SPONSOR



**Entity**

Gobierno Estatal

**Department**

Gobierno del Estado de Tamaulipas  
Secretaría de Obras Públicas

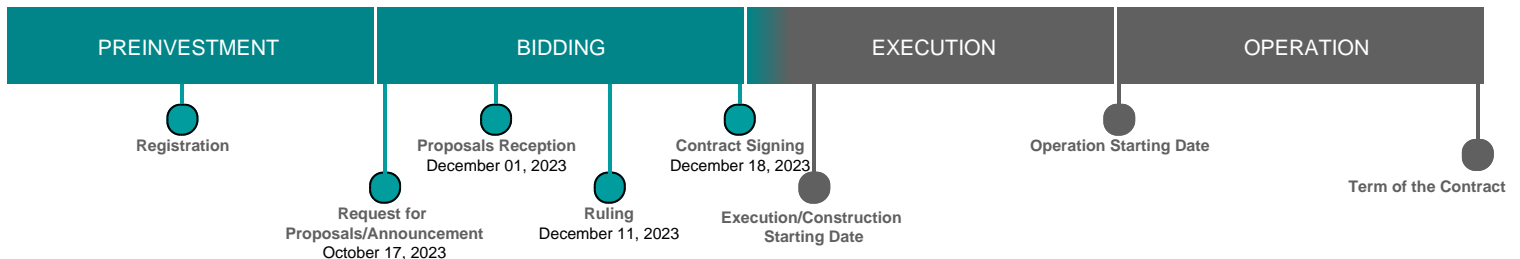
**Contact**

Ing. Pedro Cepeda Anaya

**E-mail**

pedro.cepeda@tamaulipas.gob.mx

### TIMELINE



Email: [proyectosmexico@banobras.gob.mx](mailto:proyectosmexico@banobras.gob.mx)



**SHCP**  
SECRETARÍA DE HACIENDA  
Y CRÉDITO PÚBLICO

**BANOBRAS**  
BANCO NACIONAL DE OBRAS  
Y SERVICIOS PÚBLICOS S.N.C.