

**PROJECT:** 0340 Ciudad Valles-Tamuin Bypass

**SECTOR:**  
Transport

**SUBSECTOR:**  
Highways / bridges

**STAGE ANALYZED:**  
Operation

**YEAR OF UPDATE:**  
2023

[Guide to read this datasheet](#) 

**Project's sustainability summary:** The project seeks to contribute to the improvement of air quality in Ciudad Valles in San Luis Potosi by diverting traffic away from the urban area.



**ECONOMIC AND FINANCIAL SUSTAINABILITY**

EXAMPLE OF GOOD PRACTICES

Sustainability criteria	NA	T1	T2	T3
Economic and social returns				
Creation of employment opportunities and boost local productivity				
Financial sustainability of assets				
Detailed risk analysis				
Cash flow transparency and creditworthiness				
Infrastructure asset maintenance and optimal use				
Sustainability incentives				



**ENVIRONMENTAL SUSTAINABILITY AND CLIMATE RESILIENCE**

EXAMPLE OF GOOD PRACTICES

Sustainability criteria	NA	T1	T2	T3
Greenhouse gas emissions				
Climate risks, resilience and disaster risk management				
Impacts on biodiversity and native flora and fauna in the region				
Environmental impact of the Project				
Control and monitoring of pollutants				
Efficient use of resources and recycling strategies				
Efficient use of energy and renewable sources				
Preservation or enhancement of public spaces				



**SOCIAL SUSTAINABILITY**

EXAMPLE OF GOOD PRACTICES

Sustainability criteria	NA	T1	T2	T3
Reduction of poverty and access to basic services				
Integration of communities and other interested parties				
Integration of people with disabilities or special needs				
Effects of the project in the security of the region and in the health of workers and nearby communities				
Compliance with human and labor rights				
Cultural heritage and indigenous people				
Gender inclusion and women's economic empowerment through the project				
Equal distribution of benefits and compensations to communities				



**INSTITUTIONAL SUSTAINABILITY**

EXAMPLE OF GOOD PRACTICES

Sustainability criteria	NA	T1	T2	T3
Alignment with national and international strategies				
Sectoral and institutional integration				
Corporate sustainability, management and governance				
Transparency and anti-corruption protocols				
Legal requirements and compliance with social and environmental policies				
Development of more sustainable technologies and capacities				
Knowledge transfer in matters related to sustainability				
Pre-existing conditions and their monitoring				

**Source of this project:** Website FONADIN / FONADIN rules of operation / Support Authorized by FONADIN / Responsible Investment Principles / FONADIN Rules of Operation / Investment Policies in Venture Capital Funds / FONADIN UNPRI / PRI FONADIN / UIS FONADIN / Website Ciudad Valles-Tamuin / EIA / EIA Resolution / Concession title / First Addendum to the Concession Title / Second Addendum to the Con [Show more...](#)

### Comparison of this project vs other projects of the same subsector

(Number of projects included: 63)



Methodological framework defined by the Inter-American Development Bank (IDB)

[View](#)



**PROJECT:** 0340 Ciudad Valles-Tamuin Bypass

**SECTOR:**  
Transport

**SUBSECTOR:**  
Highways / bridges

**STAGE ANALYZED:**  
Operation

**YEAR OF UPDATE:**  
2023

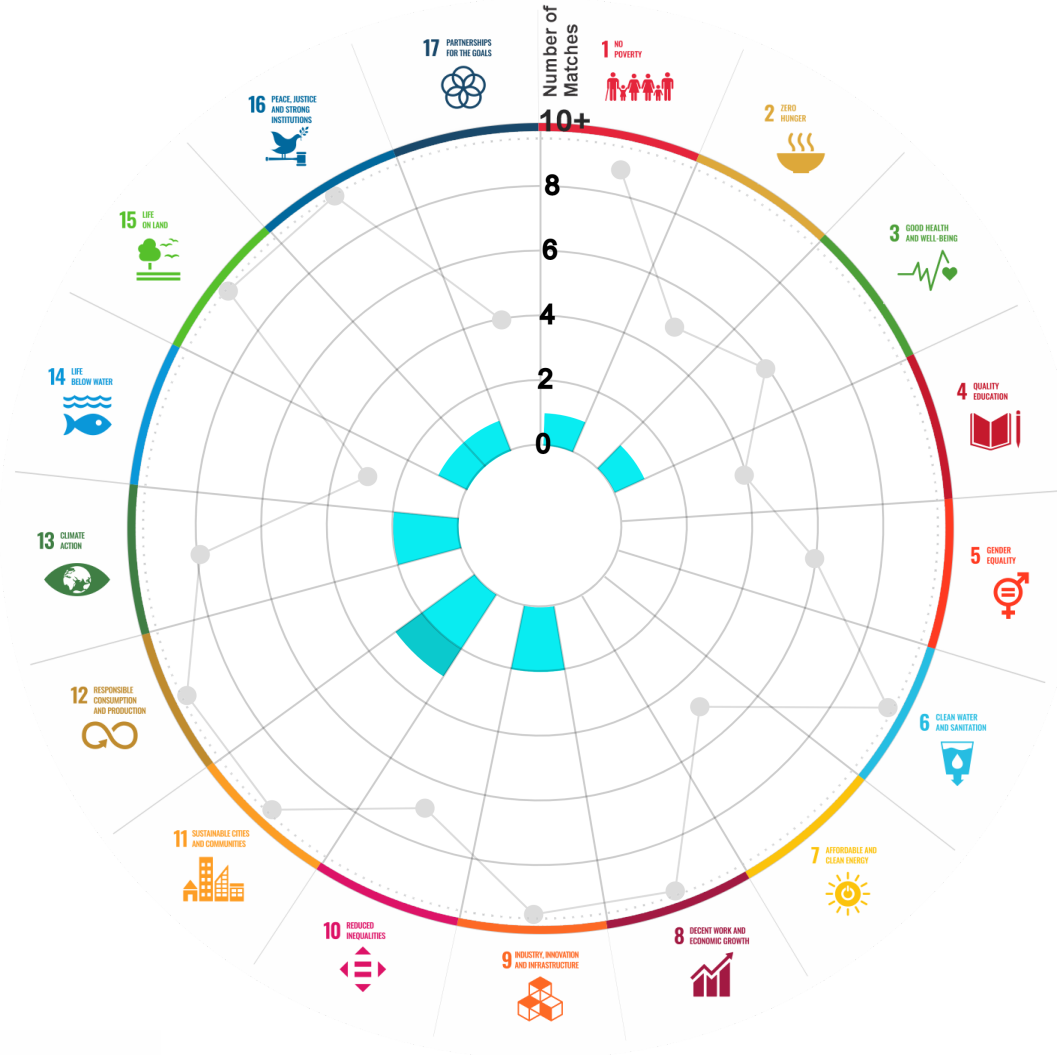
This section aims to present the potential alignment of the infrastructure project with the 17 Sustainable Development Goals (SDGs) of the 2030 Agenda. The relevance of this exercise resides in that it provides information to the actors of the infrastructure ecosystem for decision-making in investment that considers and promotes sustainable development.

Reading guide [View](#)

## 1. ALIGNMENT BY SUBSECTOR



## 2. ALIGNMENT BY SDG



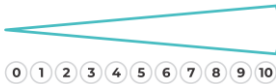
## 3. ALIGNMENT BY CRITERIA AND TARGETS

[View](#)



Explanation of the alignment of the sustainability criteria and the SDGs.

[View](#)



The tonality of the bars represents the level of detail of the information available from the IDB criteria and its potential alignment for each SDG, based on the scale: N.A., TIER 1, TIER 2 or TIER 3.

Number of times the project information coincides with the alignment of the IDB criteria and the SDGs.

Approximate reference to the number of maximum alignments a project can have between the IDB criteria and the targets of the SDGs.

# PROJECT

CONSTRUCTION, OPERATION, MAINTENANCE, CONSERVATION AND EXPLOITATION OF THE CIUDAD VALLES-TAMUIN BYPASS, IN THE STATE OF SAN LUIS POTOSI.

SECTOR: TRANSPORT  
SUBSECTOR: HIGHWAYS / BRIDGES

Type of Investment:	Brownfield	Banobras/Fonadin involvement		
Short Name of the Project:	0340 Ciudad Valles-Tamuin Bypass			
Contract Currency:	Estimated Investment MXN	Estimated Investment USD	Exchange rate (USD/MXN) used by the Ministry of Finance for the economic plan 2023 \$ 20.6	
Mexican Pesos MXN	N.A.	N.A.		

## DESCRIPTION

Concession to build, operate, maintain, conserve and exploit the 49.5 km long Ciudad Valles-Tamuin bypass, with 2 lanes, in the State of San Luis Potosi. This bypass is included in the National Infrastructure Fund (FONADIN) concession.

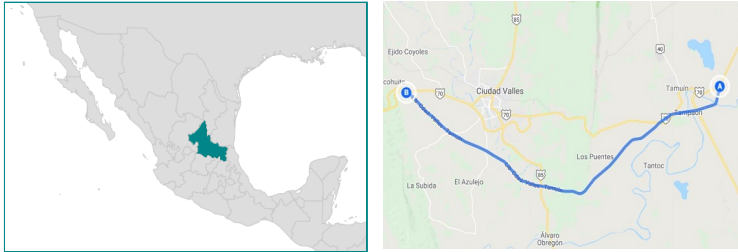
(\*) Project with Banobras and/or National Infrastructure Fund (Fonadin) involvement or support.

Contract Scope: Construction, Operation, Maintenance, Conservation, Exploitation

Type of Project:	Public	Selection Process:	Term:	47 years
Type of Contract:	Concession	Payment Source:	Project revenues / Rate	

Asset (s): Highway 49.50 KM-A2

## GEOLOCATION



## SPONSOR

### Entity

Secretaría de Infraestructura, Comunicaciones y Transportes

### Department

Dirección General de Desarrollo Carretero

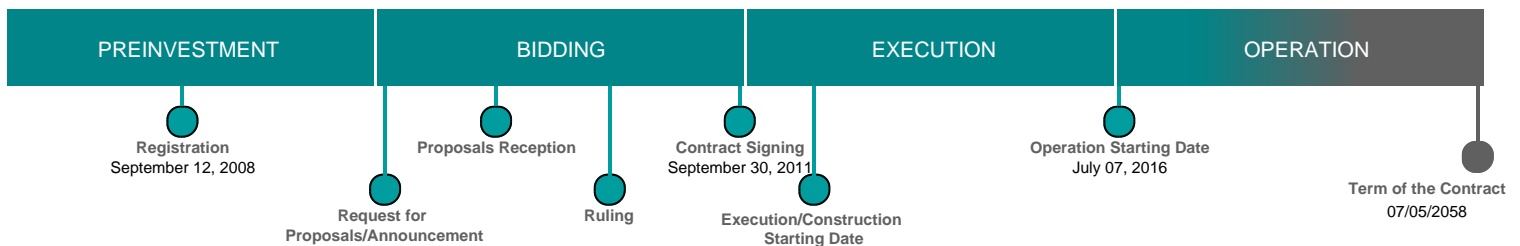
### Contact

Fernando Palma Soto / Director General Adjunto de Seguimiento de Concesiones de Autopistas

### E-mail

fpalmaso@sct.gob.mx

## TIMELINE



Email: [proyectosmexico@banobras.gob.mx](mailto:proyectosmexico@banobras.gob.mx)



**SHCP**  
SECRETARÍA DE HACIENDA  
Y CRÉDITO PÚBLICO

**BANOBRAS**  
BANCO NACIONAL DE OBRAS  
Y SERVICIOS PÚBLICOS S.N.C.