

**PROJECT:** 0344 Chihuahua Northwest Bypass

**SECTOR:**  
Transport

**SUBSECTOR:**  
Highways / bridges

**STAGE ANALYZED:**  
Operation

**YEAR OF UPDATE:**  
2023

[Guide to read this datasheet](#) 

**Project's sustainability summary:** The Chihuahua East Bypass seeks to improve the city's air quality by diverting heavy traffic, improving safety for users and inhabitants of the area.



**ECONOMIC AND FINANCIAL SUSTAINABILITY**

EXAMPLE OF GOOD PRACTICES

Sustainability criteria	NA	T1	T2	T3
Economic and social returns	█			
Creation of employment opportunities and boost local productivity		█		
Financial sustainability of assets		█		
Detailed risk analysis		█		
Cash flow transparency and creditworthiness		█		
Infrastructure asset maintenance and optimal use		█		
Sustainability incentives	█			



**ENVIRONMENTAL SUSTAINABILITY AND CLIMATE RESILIENCE**

EXAMPLE OF GOOD PRACTICES

Sustainability criteria	NA	T1	T2	T3
Greenhouse gas emissions		█		
Climate risks, resilience and disaster risk management		█		
Impacts on biodiversity and native flora and fauna in the region		█		
Environmental impact of the Project		█	█	
Control and monitoring of pollutants		█		
Efficient use of resources and recycling strategies		█		
Efficient use of energy and renewable sources	█			
Preservation or enhancement of public spaces	█			



**SOCIAL SUSTAINABILITY**

EXAMPLE OF GOOD PRACTICES

Sustainability criteria	NA	T1	T2	T3
Reduction of poverty and access to basic services		█		
Integration of communities and other interested parties		█		
Integration of people with disabilities or special needs		█		
Effects of the project in the security of the region and in the health of workers and nearby communities		█		
Compliance with human and labor rights		█		
Cultural heritage and indigenous people		█		
Gender inclusion and women's economic empowerment through the project		█		
Equal distribution of benefits and compensations to communities		█		



**INSTITUTIONAL SUSTAINABILITY**

EXAMPLE OF GOOD PRACTICES

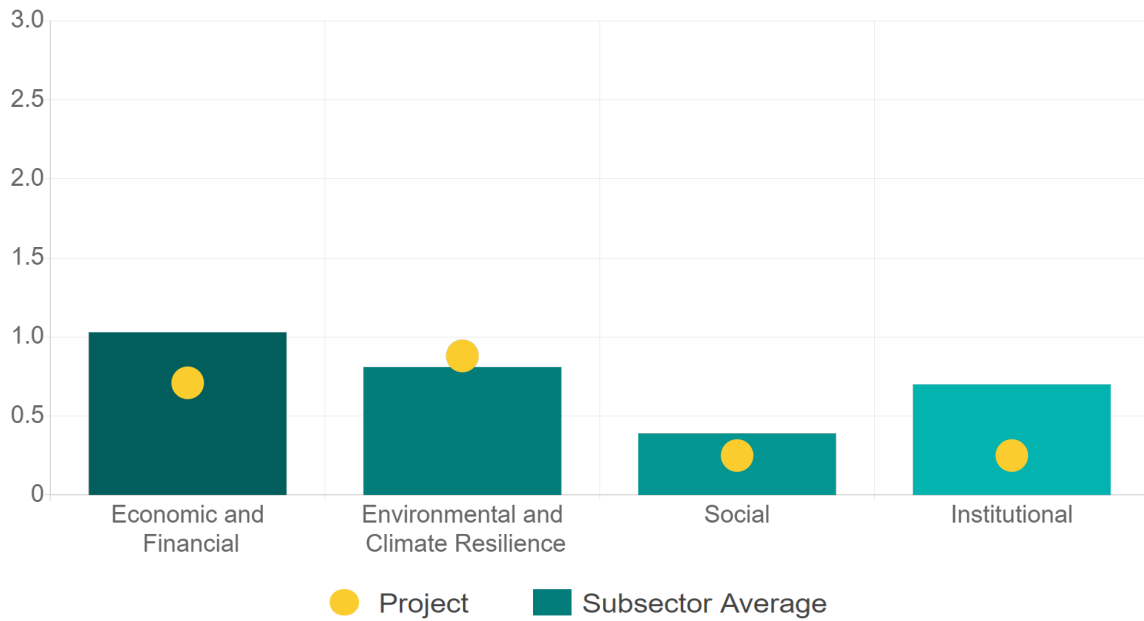
Sustainability criteria	NA	T1	T2	T3
Alignment with national and international strategies		█		
Sectoral and institutional integration		█		
Corporate sustainability, management and governance		█		
Transparency and anti-corruption protocols		█		
Legal requirements and compliance with social and environmental policies		█		
Development of more sustainable technologies and capacities		█		
Knowledge transfer in matters related to sustainability		█		
Pre-existing conditions and their monitoring		█		

**Source of this project:** EIA / EIA Resolution / FONADIN Website / FONADIN Operation Rules / Support Authorized by FONADIN / Responsible Investment Principles / FONADIN Operation Rules / Investment Policies in Venture Capital Funds / FONADIN UNPRI / PRI FONADIN / UIS FONADIN / Libramiento Oriente Chihuahua Website / Road Data / Concession Title / 1st Addendum to the Concession Title / 2nd [Show more...](#)



### Comparison of this project vs other projects of the same subsector

(Number of projects included: 63)



Methodological framework defined by the Inter-American Development Bank (IDB)

[View](#)



**PROJECT:** 0344 Chihuahua Northwest Bypass

**SECTOR:**  
Transport

**SUBSECTOR:**  
Highways / bridges

**STAGE ANALYZED:**  
Operation

**YEAR OF UPDATE:**  
2023

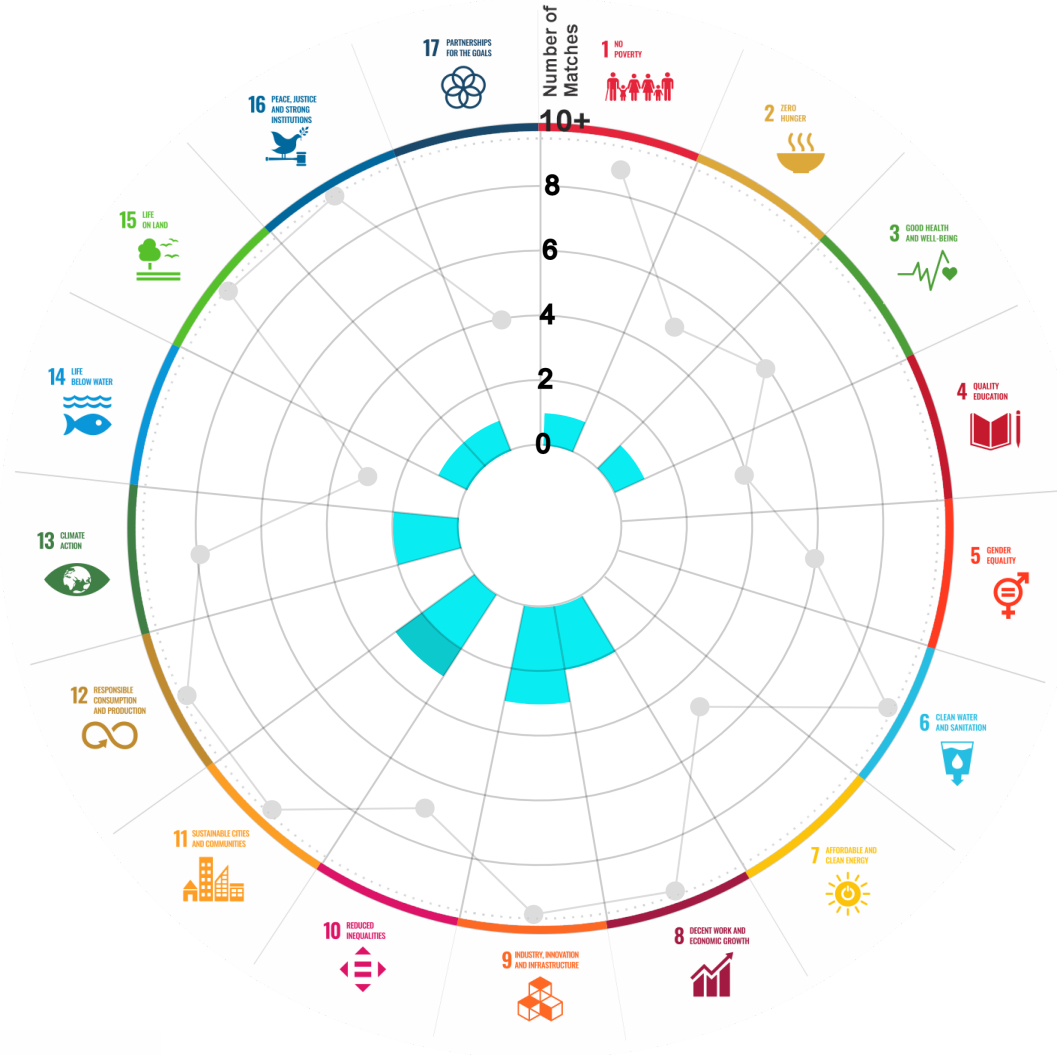
This section aims to present the potential alignment of the infrastructure project with the 17 Sustainable Development Goals (SDGs) of the 2030 Agenda. The relevance of this exercise resides in that it provides information to the actors of the infrastructure ecosystem for decision-making in investment that considers and promotes sustainable development.

Reading guide [View](#)

## 1. ALIGNMENT BY SUBSECTOR



## 2. ALIGNMENT BY SDG



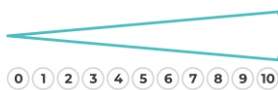
## 3. ALIGNMENT BY CRITERIA AND TARGETS

[View](#)



Explanation of the alignment of the sustainability criteria and the SDGs.

[View](#)



The tonality of the bars represents the level of detail of the information available from the IDB criteria and its potential alignment for each SDG, based on the scale: N.A., TIER 1, TIER 2 or TIER 3.

Number of times the project information coincides with the alignment of the IDB criteria and the SDGs.

Approximate reference to the number of maximum alignments a project can have between the IDB criteria and the targets of the SDGs.

# P R O J E C T

CONSTRUCTION, OPERATION, MAINTENANCE, CONSERVATION AND EXPLOITATION OF THE EAST CHIHUAHUA BYPASS IN THE STATE OF CHIHUAHUA.

SECTOR: TRANSPORT  
SUBSECTOR: HIGHWAYS / BRIDGES

Type of Investment: Brownfield

Short Name of the Project: 0344 Chihuahua Northwest Bypass

Contract Currency:  
Mexican Pesos MXN

Estimated Investment MXN  
N.A.

Estimated Investment USD  
N.A.

Exchange rate (USD/MXN) used by the Ministry of Finance for the economic plan 2023 \$ 20.6

## DESCRIPTION

This toll highway is included in the National Infrastructure Fund (FONADIN) concession in the SECOND ADDENDUM (Aug. 24, 2012): Concession to build, operate, exploit, conserve and maintain the east Chihuahua bypass located from the 0+000 to the 42+304 km of the Chihuahua-Ciudad Juarez toll highway, in the state of Chihuahua. The concession include the right-of-way.

**Contract Scope:** Construction, Operation, Maintenance, Conservation, Exploitation

Type of Project: Public

Selection Process: \_\_\_\_\_

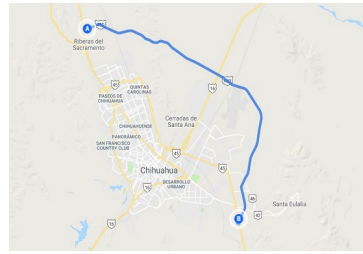
Term: 46 years

Type of Contract: Concession

Payment Source: Project revenues / Rate

**Asset (s):** Highway 42.30 KM-A2

## GEOLOCATION



## SPONSOR

### Entity

Secretaría de Infraestructura, Comunicaciones y Transportes

### Department

Dirección General de Desarrollo Carretero

### Contact

Fernando Palma Soto / Director General Adjunto de Seguimiento de Concesiones de Autopistas

### E-mail

fpalmaso@sct.gob.mx

## TIMELINE



Email: [proyectosmexico@banobras.gob.mx](mailto:proyectosmexico@banobras.gob.mx)



**SHCP**  
SECRETARÍA DE HACIENDA  
Y CRÉDITO PÚBLICO

**BANOBRAS**  
BANCO NACIONAL DE OBRAS  
Y SERVICIOS PÚBLICOS S.N.C.