

PROJECT: 0342 Felipe Carrillo Puerto Bypass

SECTOR:
Transport

SUBSECTOR:
Highways / bridges

STAGE ANALYZED:
Operation

YEAR OF UPDATE:
2023

Guide to read this datasheet [View](#)

Project's sustainability summary: The objective of the Felipe Carrillo Puerto Bypass in Quintana Roo is to divert heavy traffic to reduce pollutants in the air of that city, while offering greater security for its inhabitants.

ECONOMIC AND FINANCIAL SUSTAINABILITY

EXAMPLE OF GOOD PRACTICES

Sustainability criteria	NA	T1	T2	T3
Economic and social returns	█			
Creation of employment opportunities and boost local productivity		█	█	
Financial sustainability of assets		█	█	
Detailed risk analysis		█	█	
Cash flow transparency and creditworthiness		█	█	
Infrastructure asset maintenance and optimal use		█	█	
Sustainability incentives	█			

ENVIRONMENTAL SUSTAINABILITY AND CLIMATE RESILIENCE

EXAMPLE OF GOOD PRACTICES

Sustainability criteria	NA	T1	T2	T3
Greenhouse gas emissions		█		
Climate risks, resilience and disaster risk management		█		
Impacts on biodiversity and native flora and fauna in the region		█	█	
Environmental impact of the Project		█	█	
Control and monitoring of pollutants		█		
Efficient use of resources and recycling strategies		█		
Efficient use of energy and renewable sources	█			
Preservation or enhancement of public spaces	█			

SOCIAL SUSTAINABILITY

EXAMPLE OF GOOD PRACTICES

Sustainability criteria	NA	T1	T2	T3
Reduction of poverty and access to basic services		█		
Integration of communities and other interested parties				
Integration of people with disabilities or special needs				
Effects of the project in the security of the region and in the health of workers and nearby communities				
Compliance with human and labor rights				
Cultural heritage and indigenous people		█		
Gender inclusion and women's economic empowerment through the project				
Equal distribution of benefits and compensations to communities				

INSTITUTIONAL SUSTAINABILITY

EXAMPLE OF GOOD PRACTICES

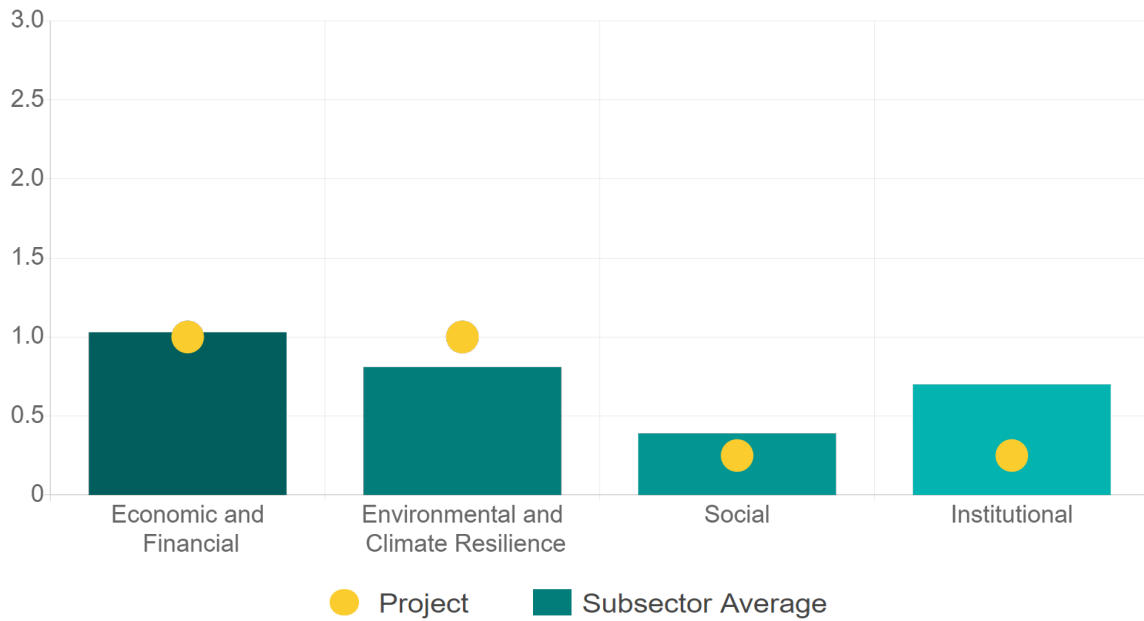
Sustainability criteria	NA	T1	T2	T3
Alignment with national and international strategies		█		
Sectoral and institutional integration		█		
Corporate sustainability, management and governance				
Transparency and anti-corruption protocols				
Legal requirements and compliance with social and environmental policies				
Development of more sustainable technologies and capacities				
Knowledge transfer in matters related to sustainability				
Pre-existing conditions and their monitoring				

Source of this project: EIA / EIA Resolution / FONADIN Website / Support Authorized by FONADIN / Responsible Investment Principles / FONADIN Operation Rules / Investment Policies in Venture Capital Funds / FONADIN UNPRI / FONADIN / UIS FONADIN / Concession title / First Addendum to the Concession Title / Second Addendum to the Concession Title / First Modification to the Concession Title / [Seco>Show more...](#)



Comparison of this project vs other projects of the same subsector

(Number of projects included: 63)



Methodological framework defined by the Inter-American Development Bank (IDB)

[View](#)



PROJECT: 0342 Felipe Carrillo Puerto Bypass

SECTOR:
Transport

SUBSECTOR:
Highways / bridges

STAGE ANALYZED:
Operation

YEAR OF UPDATE:
2023

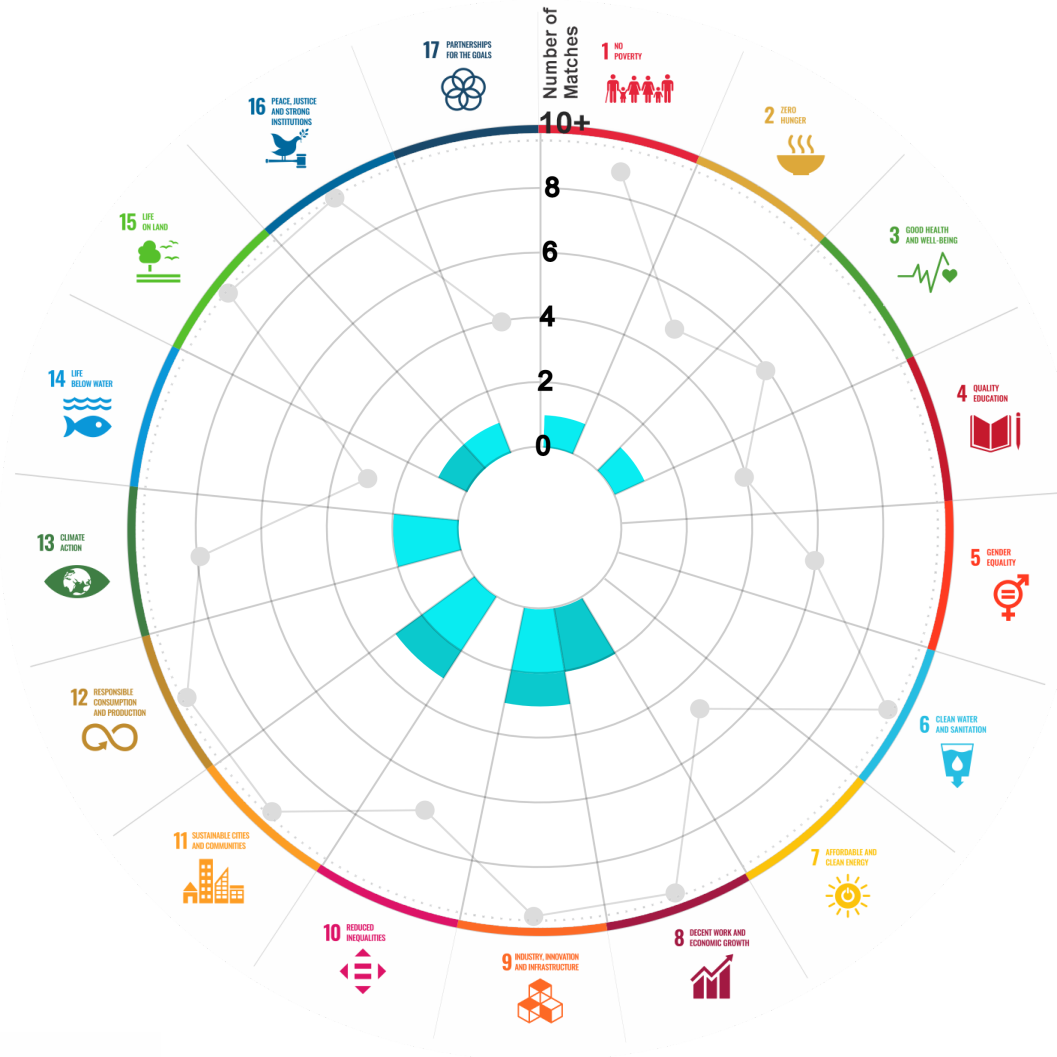
This section aims to present the potential alignment of the infrastructure project with the 17 Sustainable Development Goals (SDGs) of the 2030 Agenda. The relevance of this exercise resides in that it provides information to the actors of the infrastructure ecosystem for decision-making in investment that considers and promotes sustainable development.

Reading guide [View](#)

1. ALIGNMENT BY SUBSECTOR



2. ALIGNMENT BY SDG



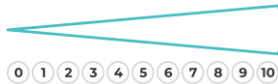
3. ALIGNMENT BY CRITERIA AND TARGETS

[View](#)



Explanation of the alignment of the sustainability criteria and the SDGs.

[View](#)



The tonality of the bars represents the level of detail of the information available from the IDB criteria and its potential alignment for each SDG, based on the scale: N.A., TIER 1, TIER 2 or TIER 3.

Number of times the project information coincides with the alignment of the IDB criteria and the SDGs.

Approximate reference to the number of maximum alignments a project can have between the IDB criteria and the targets of the SDGs.

P R O J E C T

CONSTRUCTION, OPERATION, MAINTENANCE, CONSERVATION AND EXPLOITATION OF THE FELIPE CARRILLO PUERTO BYPASS IN THE STATE OF QUINTANA ROO.

SECTOR: TRANSPORT
SUBSECTOR: HIGHWAYS / BRIDGES

Type of Investment: Brownfield

Short Name of the Project: 0342 Felipe Carrillo Puerto Bypass

Contract Currency:
Mexican Pesos MXN

Estimated Investment MXN
N.A.

Estimated Investment USD
N.A.

Exchange rate (USD/MXN) used by the Ministry of Finance for the economic plan 2023 \$ 20.6

DESCRIPTION

This toll highway is included in the National Infrastructure Fund (FONADIN) concession in the THIRD ADDENDUM (June 25, 2013). Concession to operate, exploit, conserve and maintain the 14.14 km long Felipe Carrillo Puerto bypass, with 2 lanes, in the state of Quintana Roo. The concession includes the right-of-way.

Contract Scope: Construction, Operation, Maintenance, Conservation, Exploitation

Type of Project: Public

Selection Process: _____

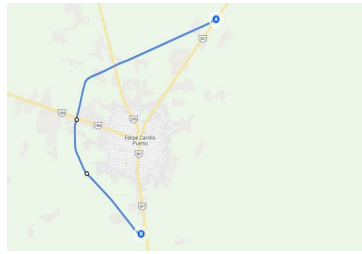
Term: 45 years

Type of Contract: Concession

Payment Source: Project revenues / Rate

Asset (s): Highway 14.14 KM-A2

GEOLOCATION



SPONSOR

Entity

Secretaría de Infraestructura, Comunicaciones y Transportes

Department

Dirección General de Desarrollo Carretero

Contact

Fernando Palma Soto / Director General Adjunto de Seguimiento de Concesiones de Autopistas

E-mail

fpalmaso@sct.gob.mx

TIMELINE



Email: proyectosmexico@banobras.gob.mx



SHCP
SECRETARÍA DE HACIENDA
Y CRÉDITO PÚBLICO

BANOBRAS
BANCO NACIONAL DE OBRAS
Y SERVICIOS PÚBLICOS S.N.C.