

PROJECT: 0143 "Siglo XXI" Highway, Jantetelco-El Higueron (Xicatlacotla) Section

SECTOR:
Transport

SUBSECTOR:
Highways / bridges

STAGE ANALYZED:
Operation

YEAR OF UPDATE:
2022

[Guide to read this datasheet](#) 

Project's sustainability summary: The project aims to maintain continuous communication between the Golgo area and the Pacific, achieving the integration of 15 communities in 8 municipalities in the Jantetelco-Xicatlacotla section of the Siglo XXI Highway in the State of Morelos.



ECONOMIC AND FINANCIAL SUSTAINABILITY

EXAMPLE OF GOOD PRACTICES

Sustainability criteria	NA	T1	T2	T3
Economic and social returns	NA			
Creation of employment opportunities and boost local productivity		█		
Financial sustainability of assets		█	█	
Detailed risk analysis		█	█	
Cash flow transparency and creditworthiness	NA			
Infrastructure asset maintenance and optimal use		█	█	█
Sustainability incentives	NA			



ENVIRONMENTAL SUSTAINABILITY AND CLIMATE RESILIENCE

EXAMPLE OF GOOD PRACTICES
The environmental management plan employs useful techniques to define wildlife crossings.

Sustainability criteria	NA	T1	T2	T3
Greenhouse gas emissions		█		
Climate risks, resilience and disaster risk management	NA			
Impacts on biodiversity and native flora and fauna in the region		█	█	█
Environmental impact of the Project		█	█	█
Control and monitoring of pollutants		█		
Efficient use of resources and recycling strategies	NA			
Efficient use of energy and renewable sources	NA			
Preservation or enhancement of public spaces	NA			



SOCIAL SUSTAINABILITY

EXAMPLE OF GOOD PRACTICES

Sustainability criteria	NA	T1	T2	T3
Reduction of poverty and access to basic services	NA			
Integration of communities and other interested parties	NA			
Integration of people with disabilities or special needs	NA			
Effects of the project in the security of the region and in the health of workers and nearby communities	NA			
Compliance with human and labor rights	NA			
Cultural heritage and indigenous people		█		
Gender inclusion and women's economic empowerment through the project	NA			
Equal distribution of benefits and compensations to communities	NA			



INSTITUTIONAL SUSTAINABILITY

EXAMPLE OF GOOD PRACTICES

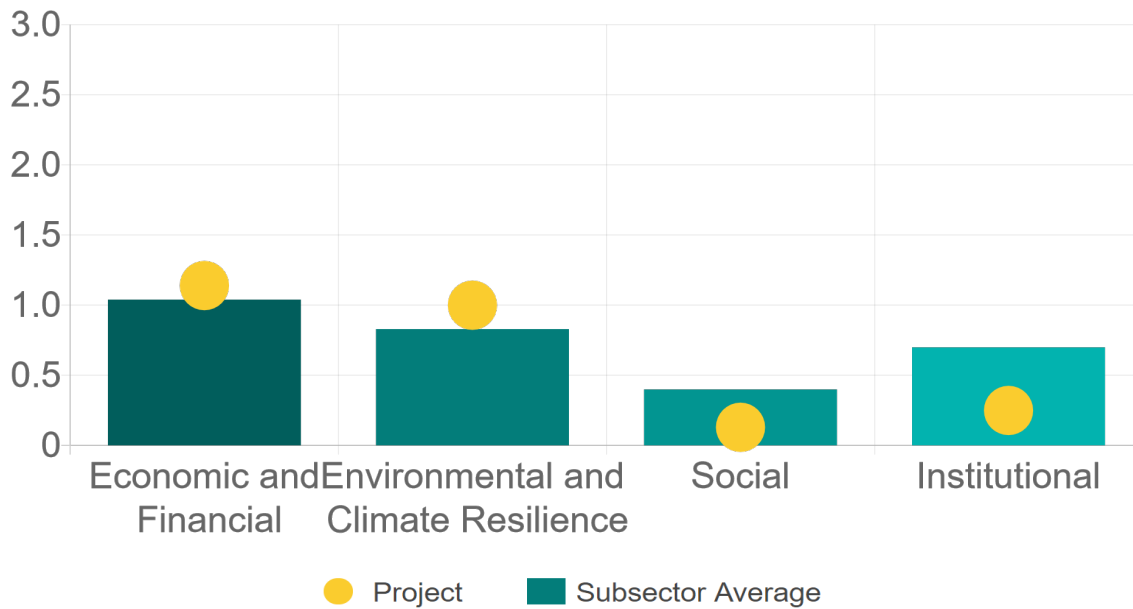
Sustainability criteria	NA	T1	T2	T3
Alignment with national and international strategies		█		
Sectoral and institutional integration		█		
Corporate sustainability, management and governance	NA			
Transparency and anti-corruption protocols	NA			
Legal requirements and compliance with social and environmental policies	NA			
Development of more sustainable technologies and capacities	NA			
Knowledge transfer in matters related to sustainability	NA			
Pre-existing conditions and their monitoring	NA			

Source of this project: Concession Title / General Rules of the Bidding / APPENDIX 1 Section on Technical Aspects / APPENDIX 2 Section on Economic and Financial Aspects / EIM 17MO2009V0001 / APPENDIX 4 Management Trust Guidelines / Resolution of the EIM 17MO2009V0001 / EIM 17MO2013V0003 / Resolution of the EIM 17MO2013V0003 / Summary of the EIM 17MO2013V0003 / Questionnaire of Principles and Best Practices of Corporate Governance / [FShow more...](#)



Comparison of this project vs other projects of the same subsector

(Number of projects included: 62)



Methodological framework defined by the Inter-American Development Bank (IDB)

[View](#)



PROJECT: 0143 "Siglo XXI" Highway, Jantetelco-El Higueron (Xicatlacotla) Section

SECTOR:
Transport

SUBSECTOR:
Highways / bridges

STAGE ANALYZED:
Operation

YEAR OF UPDATE:
2022

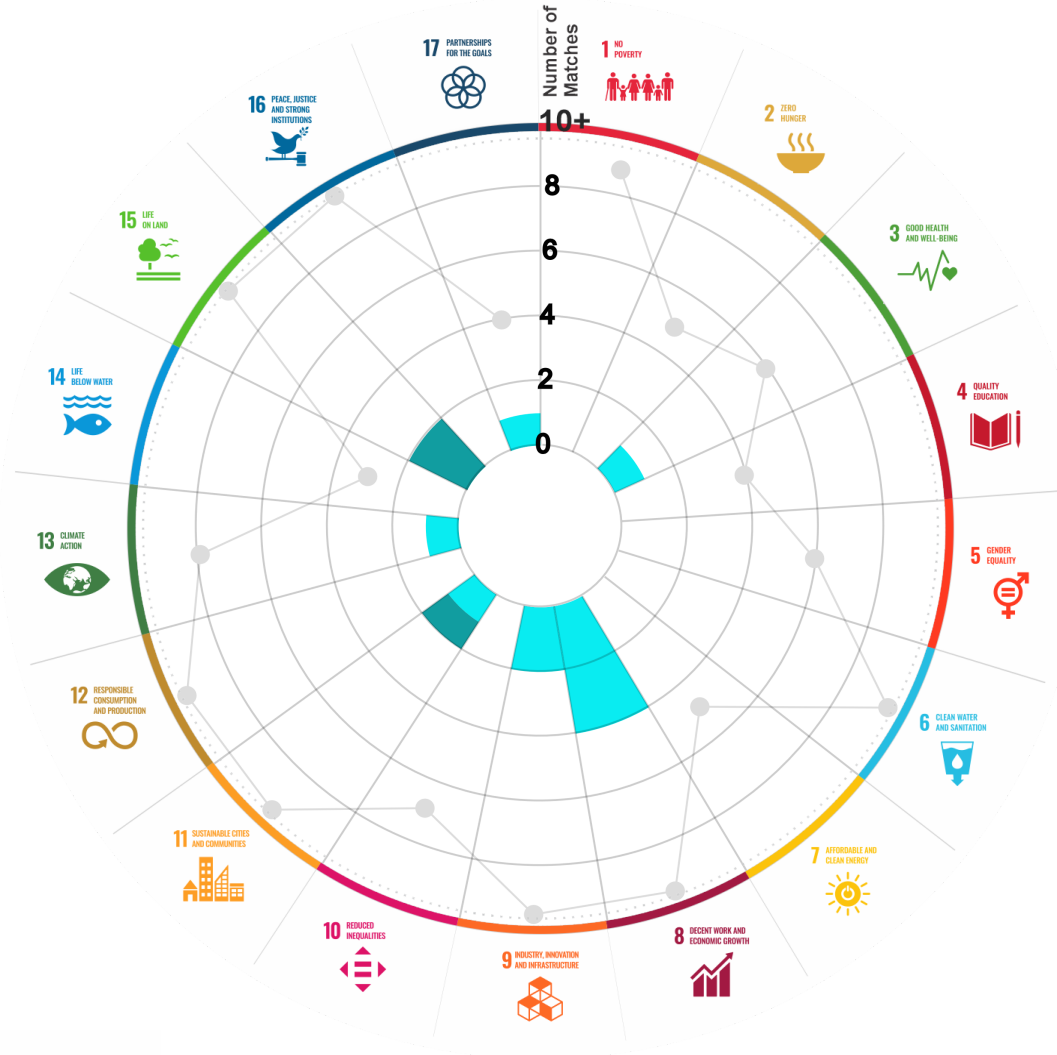
This section aims to present the potential alignment of the infrastructure project with the 17 Sustainable Development Goals (SDGs) of the 2030 Agenda. The relevance of this exercise resides in that it provides information to the actors of the infrastructure ecosystem for decision-making in investment that considers and promotes sustainable development.

Reading guide [View](#)

1. ALIGNMENT BY SUBSECTOR



2. ALIGNMENT BY SDG



3. ALIGNMENT BY CRITERIA AND TARGETS

[View](#)



Explanation of the alignment of the sustainability criteria and the SDGs.

[View](#)



The tonality of the bars represents the level of detail of the information available from the IDB criteria and its potential alignment for each SDG, based on the scale: N.A., TIER 1, TIER 2 or TIER 3.

Number of times the project information coincides with the alignment of the IDB criteria and the SDGs.

Approximate reference to the number of maximum alignments a project can have between the IDB criteria and the targets of the SDGs.

PROJECT

CONSTRUCTION, OPERATION, CONSERVATION, MAINTENANCE AND EXPLOITATION OF JANTETELCO-EL HIGUERON (XICATLACOTLA) SECTION OF THE "SIGLO XXI" TOLL HIGHWAY, IN THE STATE OF MORELOS.

SECTOR: TRANSPORT
SUBSECTOR: HIGHWAYS / BRIDGES

Type of Investment:	Brownfield		
Short Name of the Project:	0143 "Siglo XXI" Highway, Jantetelco-El Higueron (Xicatlacotla) Section		
Contract Currency:	Estimated Investment MXN	Estimated Investment USD	Exchange rate (USD/MXN) used by the Ministry of Finance for the economic plan 2023 \$ 20.6
Mexican Pesos MXN	\$ 2,719,000,000	\$ 131,990,291	

DESCRIPTION

ORIGINAL CONCESSION (Dec. 18, 2013). Concession for the construction, operation, exploitation, conservation and maintenance of the 61.8 km long Jantetelco-El Higueron (Xicatlacotla) section of the "Siglo XXI" toll highway, in the state of Morelos.

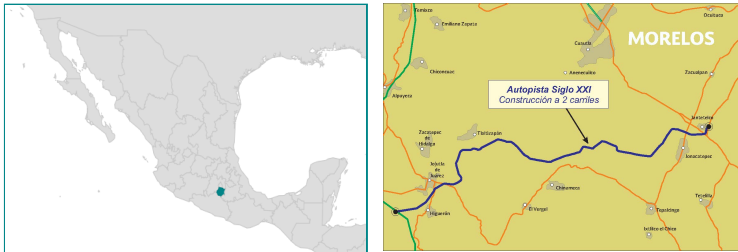
(*) Project with Banobras and/or National Infrastructure Fund (Fonadin) involvement or support.

Contract Scope: Construction, Operation, Maintenance, Conservation, Exploitation

Type of Project:	Public / Private	Selection Process:	International Open Tender	Term:	30 years
Type of Contract:	Concession	Payment Source:	Project revenues / Rate		

Asset (s): Highway 61.80 KM-A2

GEOLOCATION



SPONSOR

Entity

Secretaría de Infraestructura, Comunicaciones y Transportes

Department

Dirección General de Desarrollo Carretero

Contact

Fernando Palma Soto / Director General Adjunto de Seguimiento de Concesiones de Autopistas

E-mail

fpalmaso@sct.gob.mx

TIMELINE



Email: proyectosmexico@banobras.gob.mx



SHCP
SECRETARÍA DE HACIENDA
Y CRÉDITO PÚBLICO

BANOBRAS
BANCO NACIONAL DE OBRAS
Y SERVICIOS PÚBLICOS S.N.C.