



PROJECT: 0106 Tepic-Villa Union Highway

SECTOR:
Transport

SUBSECTOR:
Highways / bridges

STAGE ANALYZED:
Operation

YEAR OF UPDATE:
2022

[Guide to read this datasheet](#) 

Project's sustainability summary: The project aims to build, operate, exploit, conserve and maintain 237.84 km of the Tepic-Mazatlán federal highway through a 30-year concession, which allows reducing the movement of people and merchandise between Tepic and Mazatlán in an hour and a half, generating benefits more than one million interconnected inhabitants in 6 municipalities of Nayarit and 5 in Sinaloa.



ECONOMIC AND FINANCIAL SUSTAINABILITY

EXAMPLE OF GOOD PRACTICES

Sustainability criteria	NA	T1	T2	T3
Economic and social returns				
Creation of employment opportunities and boost local productivity				
Financial sustainability of assets				
Detailed risk analysis				
Cash flow transparency and creditworthiness				
Infrastructure asset maintenance and optimal use				
Sustainability incentives				



ENVIRONMENTAL SUSTAINABILITY AND CLIMATE RESILIENCE

EXAMPLE OF GOOD PRACTICES

Sustainability criteria	NA	T1	T2	T3
Greenhouse gas emissions				
Climate risks, resilience and disaster risk management				
Impacts on biodiversity and native flora and fauna in the region				
Environmental impact of the Project				
Control and monitoring of pollutants				
Efficient use of resources and recycling strategies				
Efficient use of energy and renewable sources				
Preservation or enhancement of public spaces				



SOCIAL SUSTAINABILITY

EXAMPLE OF GOOD PRACTICES

Sustainability criteria	NA	T1	T2	T3
Reduction of poverty and access to basic services				
Integration of communities and other interested parties				
Integration of people with disabilities or special needs				
Effects of the project in the security of the region and in the health of workers and nearby communities				
Compliance with human and labor rights				
Cultural heritage and indigenous people				
Gender inclusion and women's economic empowerment through the project				
Equal distribution of benefits and compensations to communities				



INSTITUTIONAL SUSTAINABILITY

EXAMPLE OF GOOD PRACTICES

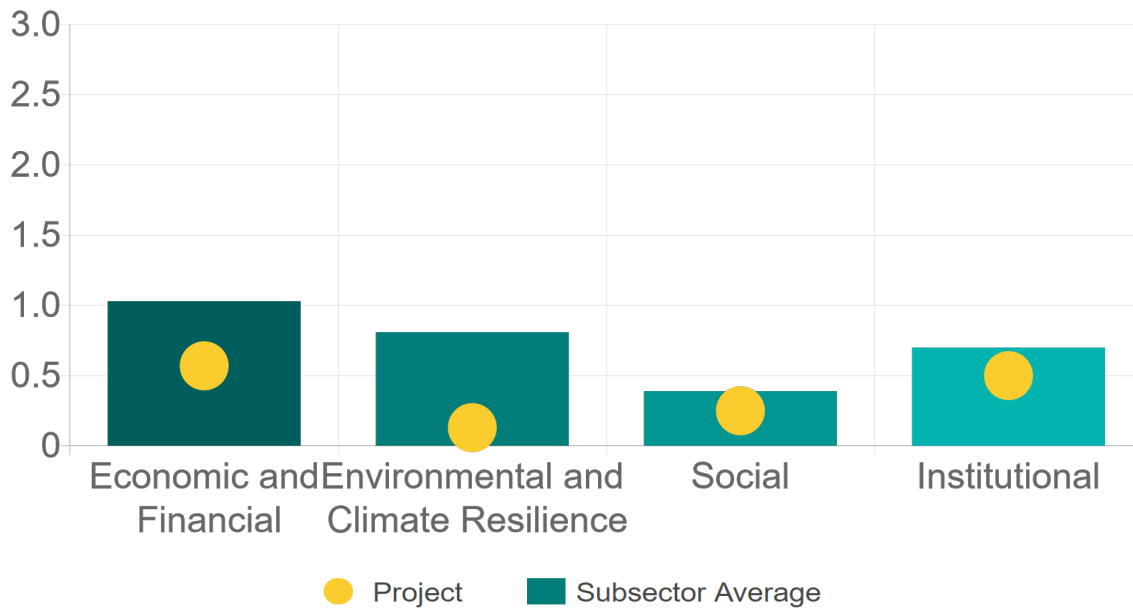
Sustainability criteria	NA	T1	T2	T3
Alignment with national and international strategies				
Sectoral and institutional integration				
Corporate sustainability, management and governance				
Transparency and anti-corruption protocols				
Legal requirements and compliance with social and environmental policies				
Development of more sustainable technologies and capacities				
Knowledge transfer in matters related to sustainability				
Pre-existing conditions and their monitoring				

Source of this project: Concession Title / First Modification to the Concession Title / Second Modification to the Concession Title / General Contest Bases / Highway website / Annual Report to the Mexican Stock Exchange 2019 / Sustainability Report 2021 / Sustainability Report 2020 / Sustainability Report 2019



Comparison of this project vs other projects of the same subsector

(Number of projects included: 63)



Methodological framework defined by the Inter-American Development Bank (IDB)

[View](#)



PROJECT: 0106 Tepic-Villa Union Highway

SECTOR:
Transport

SUBSECTOR:
Highways / bridges

STAGE ANALYZED:
Operation

YEAR OF UPDATE:
2022

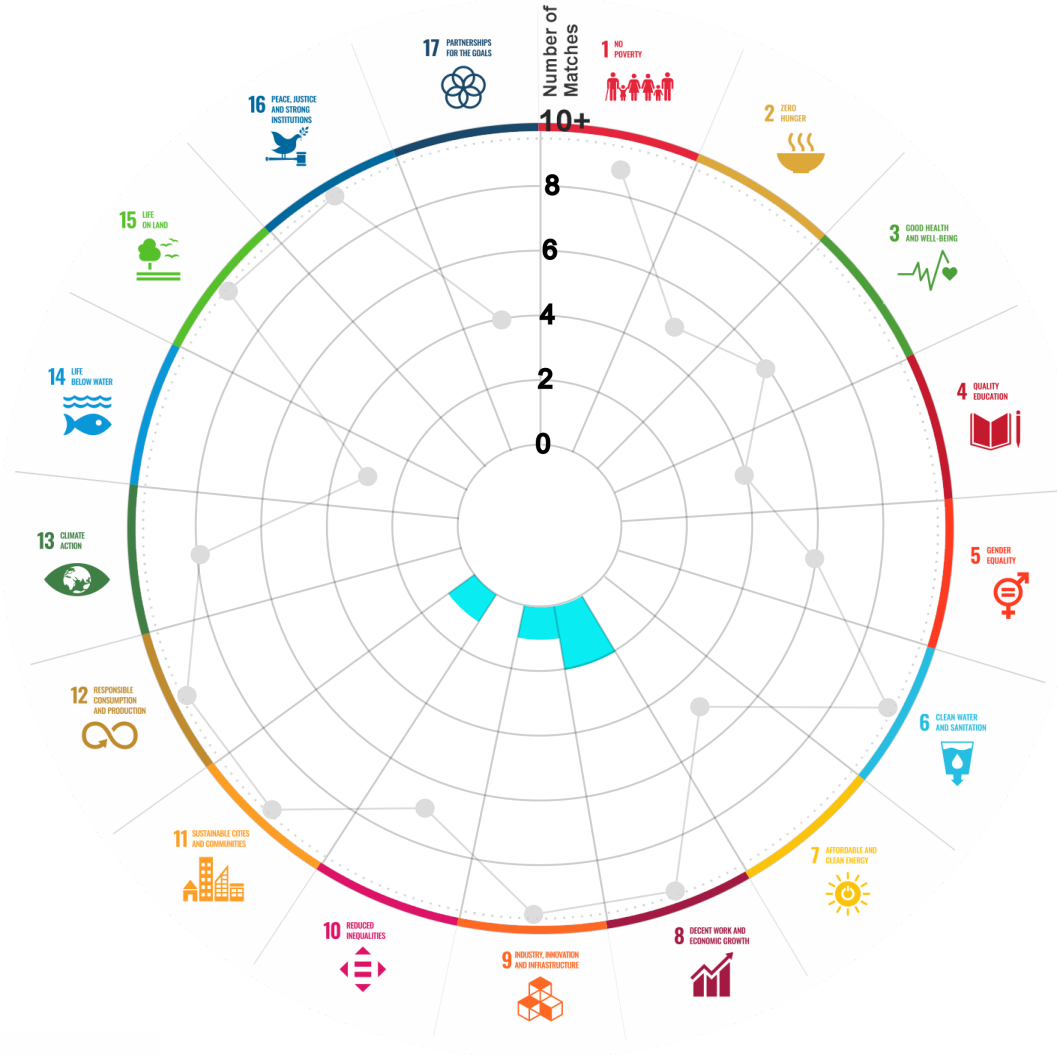
This section aims to present the potential alignment of the infrastructure project with the 17 Sustainable Development Goals (SDGs) of the 2030 Agenda. The relevance of this exercise resides in that it provides information to the actors of the infrastructure ecosystem for decision-making in investment that considers and promotes sustainable development.

Reading guide [View](#)

1. ALIGNMENT BY SUBSECTOR



2. ALIGNMENT BY SDG



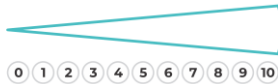
3. ALIGNMENT BY CRITERIA AND TARGETS

[View](#)



Explanation of the alignment of the sustainability criteria and the SDGs.

[View](#)



The tonality of the bars represents the level of detail of the information available from the IDB criteria and its potential alignment for each SDG, based on the scale: N.A., TIER 1, TIER 2 or TIER 3.

Number of times the project information coincides with the alignment of the IDB criteria and the SDGs.

Approximate reference to the number of maximum alignments a project can have between the IDB criteria and the targets of the SDGs.

P R O J E C T

CONSTRUCTION, OPERATION, MAINTENANCE, CONSERVATION AND EXPLOITATION OF THE TEPIC-VILLA UNIÓN TOLL HIGHWAY, IN THE STATES OF NAYARIT AND SINALOA.

SECTOR: TRANSPORT
SUBSECTOR: HIGHWAYS / BRIDGES

Type of Investment: Brownfield

Short Name of the Project: 0106 Tepic-Villa Union Highway

Contract Currency:
Mexican Pesos MXN

Estimated Investment MXN
N.A.

Estimated Investment USD
N.A.

Exchange rate (USD/MXN) used by the Ministry of Finance for the economic plan 2023 \$ 20.6

DESCRIPTION

ORIGINAL CONCESSION (Apr. 6, 2005). construct, operate, exploit, conserve and maintain the 237.84 km long Tepic-Villa Union highway of federal jurisdiction, from the 00+000 km to the 263+640 km of the Tepic-Mazatlan highway, divided into 5 sections. All sections include right-of-way and ancillary services. The term of the concession is 30 years.

FIRST ADDENDUM (10/23/2006). Completion of Section 3 construction is included. Also is included for Section 5, the two bends that connect it with the Durango-Mazatlan highway in the Caleritas Junction, the first one with a length of 1,458.41 meters, with construction chain originating in the 31+000 km to the 32+458.41 km, and the second one, with a length of 919.9 meters, with a construction chain originating in the 21+000 km to the 21+990.9 km.

SECOND ADDENDUM (11/12/2020). The concession is extended for 10 years, until April 2045. The definition of "Consideration" is extended.

Contract Scope: Construction, Operation, Maintenance, Conservation, Exploitation

Type of Project: Public / Private

Selection Process: International Open Tender

Term: 30 years

Type of Contract: Concession

Payment Source: Project revenues / Rate

Asset (s): Highway 237.84 KM

GEOLOCATION



SPONSOR

Entity

Secretaría de Infraestructura, Comunicaciones y Transportes

Department

Dirección General de Desarrollo Carretero

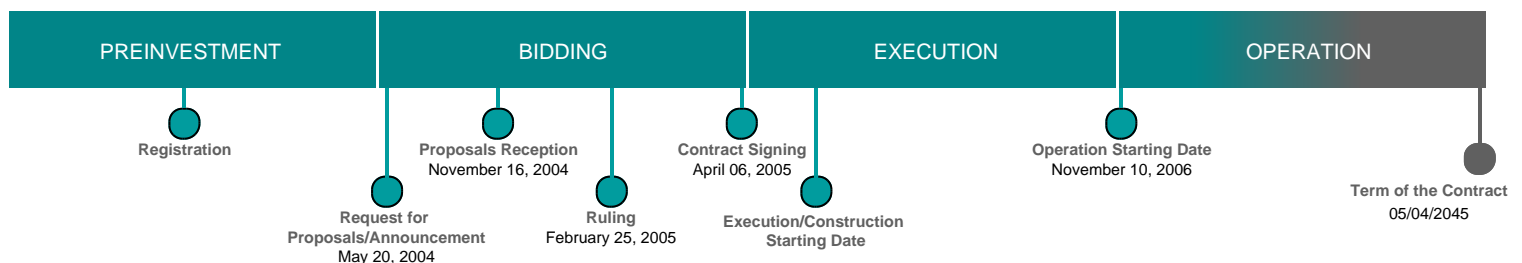
Contact

Fernando Palma Soto / Director General Adjunto de Seguimiento de Concesiones de Autopistas

E-mail

fpalmaso@sct.gob.mx

TIMELINE



Email: proyectosmexico@banobras.gob.mx



SHCP
SECRETARÍA DE HACIENDA
Y CRÉDITO PÚBLICO

BANOBRAS
BANCO NACIONAL DE OBRAS
Y SERVICIOS PÚBLICOS S.N.C.