



**PROJECT:** 0300 Manzanillo Airport

**SECTOR:**  
Transport

**SUBSECTOR:**  
Airports

**STAGE ANALYZED:**  
Operation

**YEAR OF UPDATE:**  
2022

[Guide to read this datasheet](#) 

**Project's sustainability summary:** The project attends the air traffic of the city of Manzanillo and six more municipalities in the state of Colima. Considers a corporate sustainability policy to increase actions in favor of climate, renewable energy and gender equality.



## ECONOMIC AND FINANCIAL SUSTAINABILITY

**EXAMPLE OF GOOD PRACTICES**

The developer implements a Green Bond Framework to finance projects that include sustainability best practices.

Sustainability criteria	NA	T1	T2	T3
Economic and social returns				
Creation of employment opportunities and boost local productivity				
Financial sustainability of assets				
Detailed risk analysis				
Cash flow transparency and creditworthiness				
Infrastructure asset maintenance and optimal use				
Sustainability incentives				



## ENVIRONMENTAL SUSTAINABILITY AND CLIMATE RESILIENCE

**EXAMPLE OF GOOD PRACTICES**

Proposes circular economy strategies regarding water and waste management.

Sustainability criteria	NA	T1	T2	T3
Greenhouse gas emissions				
Climate risks, resilience and disaster risk management				
Impacts on biodiversity and native flora and fauna in the region				
Environmental impact of the Project				
Control and monitoring of pollutants				
Efficient use of resources and recycling strategies				
Efficient use of energy and renewable sources				
Preservation or enhancement of public spaces				



## SOCIAL SUSTAINABILITY

**EXAMPLE OF GOOD PRACTICES**

Considers a gender corporate policy and measures to reduce the pay gap between men and women employees.

Sustainability criteria	NA	T1	T2	T3
Reduction of poverty and access to basic services				
Integration of communities and other interested parties				
Integration of people with disabilities or special needs				
Effects of the project in the security of the region and in the health of workers and nearby communities				
Compliance with human and labor rights				
Cultural heritage and indigenous people				
Gender inclusion and women's economic empowerment through the project				
Equal distribution of benefits and compensations to communities				



## INSTITUTIONAL SUSTAINABILITY

**EXAMPLE OF GOOD PRACTICES**

Considers a plan that incorporates sustainability criteria in contracting and bidding processes for the supply chain.

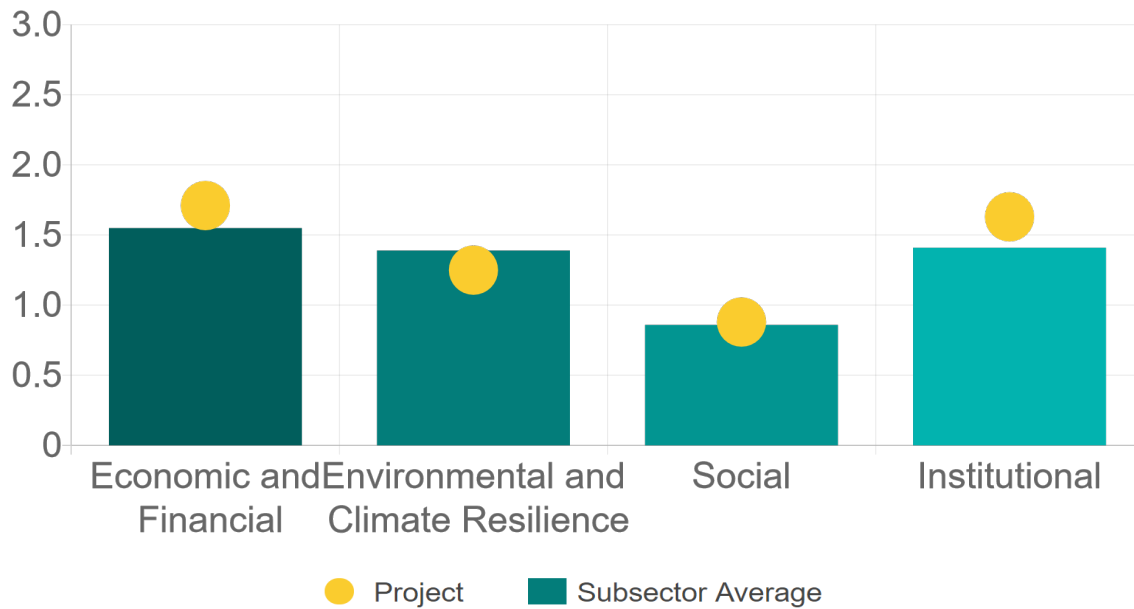
Sustainability criteria	NA	T1	T2	T3
Alignment with national and international strategies				
Sectoral and institutional integration				
Corporate sustainability, management and governance				
Transparency and anti-corruption protocols				
Legal requirements and compliance with social and environmental policies				
Development of more sustainable technologies and capacities				
Knowledge transfer in matters related to sustainability				
Pre-existing conditions and their monitoring				

**Source of this project:** Concession Title / Concession Title Modification / Annual Report 2021 / Sustainability Report / Green Bond Framework / Anti-corruption Guidelines



### Comparison of this project vs other projects of the same subsector

(Number of projects included: 16)



Methodological framework defined by the Inter-American Development Bank (IDB)

[View](#)



**PROJECT:** 0300 Manzanillo Airport

**SECTOR:**  
Transport

**SUBSECTOR:**  
Airports

**STAGE ANALYZED:**  
Operation

**YEAR OF UPDATE:**  
2022

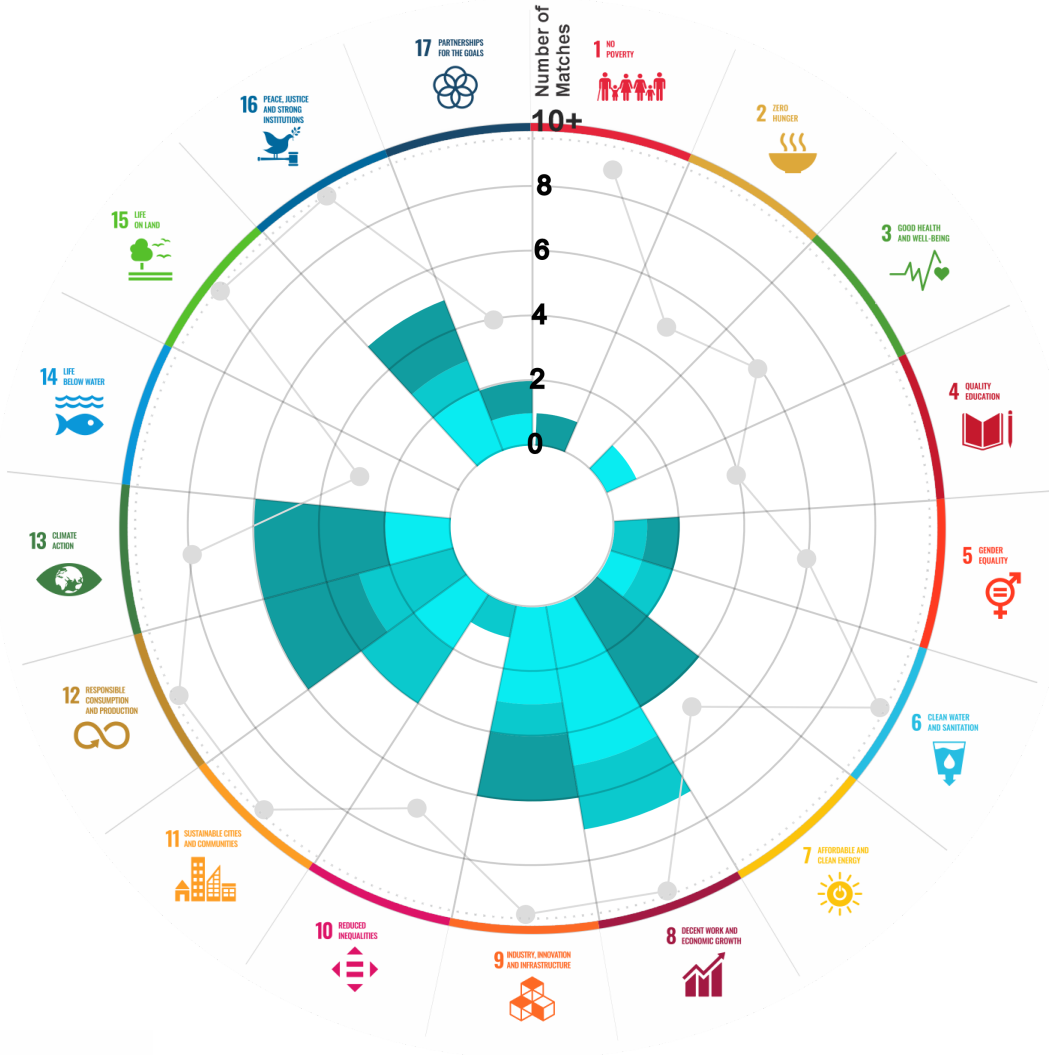
This section aims to present the potential alignment of the infrastructure project with the 17 Sustainable Development Goals (SDGs) of the 2030 Agenda. The relevance of this exercise resides in that it provides information to the actors of the infrastructure ecosystem for decision-making in investment that considers and promotes sustainable development.

Reading guide [View](#)

**1. ALIGNMENT BY SUBSECTOR**



**2. ALIGNMENT BY SDG**

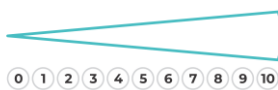


**3. ALIGNMENT BY CRITERIA AND TARGETS**

[View](#)

Explanation of the alignment of the sustainability criteria and the SDGs.

[View](#)



The tonality of the bars represents the level of detail of the information available from the IDB criteria and its potential alignment for each SDG, based on the scale: N.A., TIER 1, TIER 2 or TIER 3.

Number of times the project information coincides with the alignment of the IDB criteria and the SDGs.

Approximate reference to the number of maximum alignments a project can have between the IDB criteria and the targets of the SDGs.



## P R O J E C T

OPERATION, ADMINISTRATION AND EXPLOITATION OF MANZANILLO INTERNATIONAL AIRPORT, IN THE STATE OF COLIMA.

SECTOR: TRANSPORT  
SUBSECTOR: AIRPORTS

Type of Investment: Brownfield

Short Name of the Project: 0300 Manzanillo Airport

Contract Currency:  
Mexican Pesos MXN

Estimated Investment MXN  
N.A.

Estimated Investment USD  
N.A.

Exchange rate (USD/MXN) used by the Ministry of Finance for the economic plan 2023 \$ 20.6

### DESCRIPTION

Concession to manage, operate and exploit Manzanillo International Airport and, where appropriate, carry out building works. The airport has 1 runway with the following dimensions: 2,260 m by 45 m; and 1 passenger terminal of 5,900 m<sup>2</sup>.

Contract Scope: Operation, Administration, Exploitation

Type of Project: Public / Private

Selection Process:

Term: 50 years

Type of Contract: Concession

Payment Source: Project revenues / Rate

Asset (s): Airport 1 Runway, 1 Passenger terminal

### GEOLOCATION



### SPONSOR

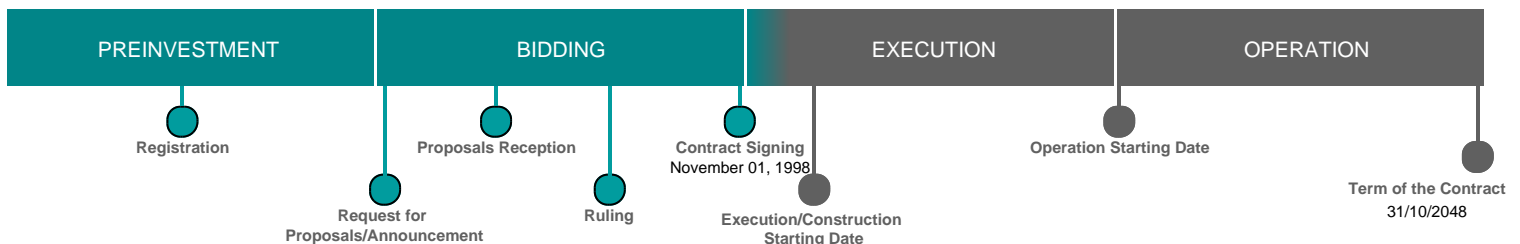
#### Entity

Secretaría de Infraestructura, Comunicaciones y Transportes

#### Department

Agencia Federal de Aviación Civil

### TIMELINE



Email: [proyectosmexico@banobras.gob.mx](mailto:proyectosmexico@banobras.gob.mx)



**SHCP**  
SECRETARÍA DE HACIENDA  
Y CRÉDITO PÚBLICO

**BANOBRAS**  
BANCO NACIONAL DE OBRAS  
Y SERVICIOS PÚBLICOS S.N.C.