

PROJECT: 0900 Tultepec - "Felipe Angeles" International Airport - Piramides Highway

SECTOR:
Transport

SUBSECTOR:
Highways / bridges

STAGE ANALYZED:
Bidding

YEAR OF UPDATE:
2020

[Guide to read this datasheet](#) 

Project's sustainability summary: The project aims to improve the interconnectivity of main roads between the states of Mexico, Querétaro, Hidalgo and Veracruz and will also serve as access to the Felipe Ángeles International Airport. Promotes the use of clean energy, the contracting of services from micro, small and medium enterprises, as well as environmental management and operational safety practices.



ECONOMIC AND FINANCIAL SUSTAINABILITY

EXAMPLE OF GOOD PRACTICES
The project promotes the subcontracting of services for micro, small and medium-sized companies.

| Sustainability criteria | NA | T1 | T2 | T3 |
|---|----|----|----|----|
| Economic and social returns | | █ | | |
| Creation of employment opportunities and boost local productivity | | | | |
| Financial sustainability of assets | | █ | | |
| Value for money principle | | | | |
| Detailed risk analysis | | █ | █ | |
| Cash flow transparency and creditworthiness | | | | |
| Infrastructure asset maintenance and optimal use | | █ | | |
| Sustainability incentives | | | | |



ENVIRONMENTAL SUSTAINABILITY AND CLIMATE RESILIENCE

EXAMPLE OF GOOD PRACTICES
As requirements for bidding and operation, the ISO 140001 certification on environmental management and the use of solar panels or wind systems for electricity generation are promoted.

| Sustainability criteria | NA | T1 | T2 | T3 |
|--|----|----|----|----|
| Greenhouse gas emissions | | | | |
| Climate risks, resilience and disaster risk management | | █ | | |
| Impacts on biodiversity and native flora and fauna in the region | | | | |
| Environmental Impact of the Project | | █ | █ | |
| Control and monitoring of pollutants | | | | |
| Efficient use of resources and recycling strategies | | | | |
| Efficient use of energy and renewable sources | | █ | █ | |
| Preservation or enhancement of public spaces | | | | |



SOCIAL SUSTAINABILITY

EXAMPLE OF GOOD PRACTICES
The integration of people with disabilities in the bidders workforce is promoted, as well as the OHSAS 18001 certification on occupational management and safety.

| Sustainability criteria | NA | T1 | T2 | T3 |
|--|----|----|----|----|
| Reduction of poverty and access to basic services | | | | |
| Integration of communities and other interested parties | | | | |
| Integration of people with disabilities or special needs | | █ | | |
| Effects of the project in the security of the region and in the health of workers and nearby communities | | | █ | |
| Compliance with human and labor rights | | █ | | |
| Cultural heritage and indigenous people | | | | |
| Gender inclusion and women's economic empowerment through the project | | | | |
| Equal distribution of benefits and compensations to communities | | | | |



INSTITUTIONAL SUSTAINABILITY

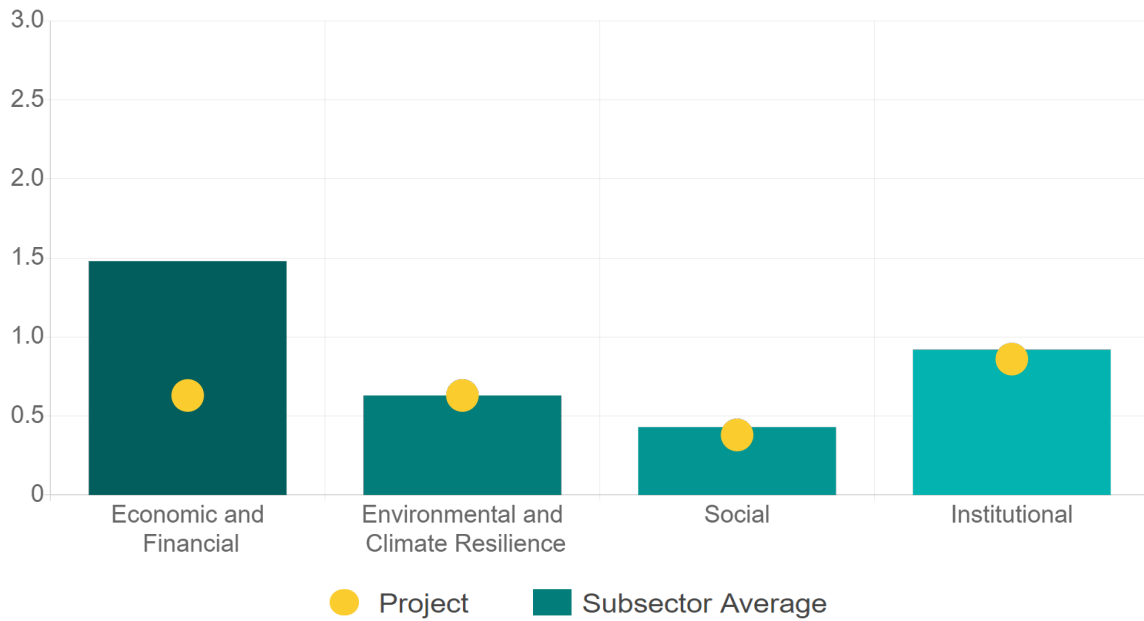
EXAMPLE OF GOOD PRACTICES
Considers training in environmental management for workers to be hired.

| Sustainability criteria | NA | T1 | T2 | T3 |
|--|----|----|----|----|
| Alignment with national and international strategies | | █ | | |
| Sectoral and institutional integration | | | | |
| Transparency of the process | | █ | █ | █ |
| Corruption and mitigation process | | | | |
| Legal requirements and compliance with social and environmental policies | | | | |
| Training development in aspects related to sustainability | | █ | | |
| Pre-existing conditions and their monitoring | | █ | | |

Source of this project: Call for bidding / Bidding rules / Concession title (project) / Management Trust / Technical paper / Operation specifications

Comparison of this project vs other projects of the same subsector

(Number of projects included: 5)



Methodological framework defined by the Inter-American Development Bank (IDB)

[View](#)



PROJECT: 0900 Tultepec - "Felipe Angeles" International Airport - Piramides Highway

SECTOR:
Transport

SUBSECTOR:
Highways / bridges

STAGE ANALYZED:
Bidding

YEAR OF UPDATE:
2020

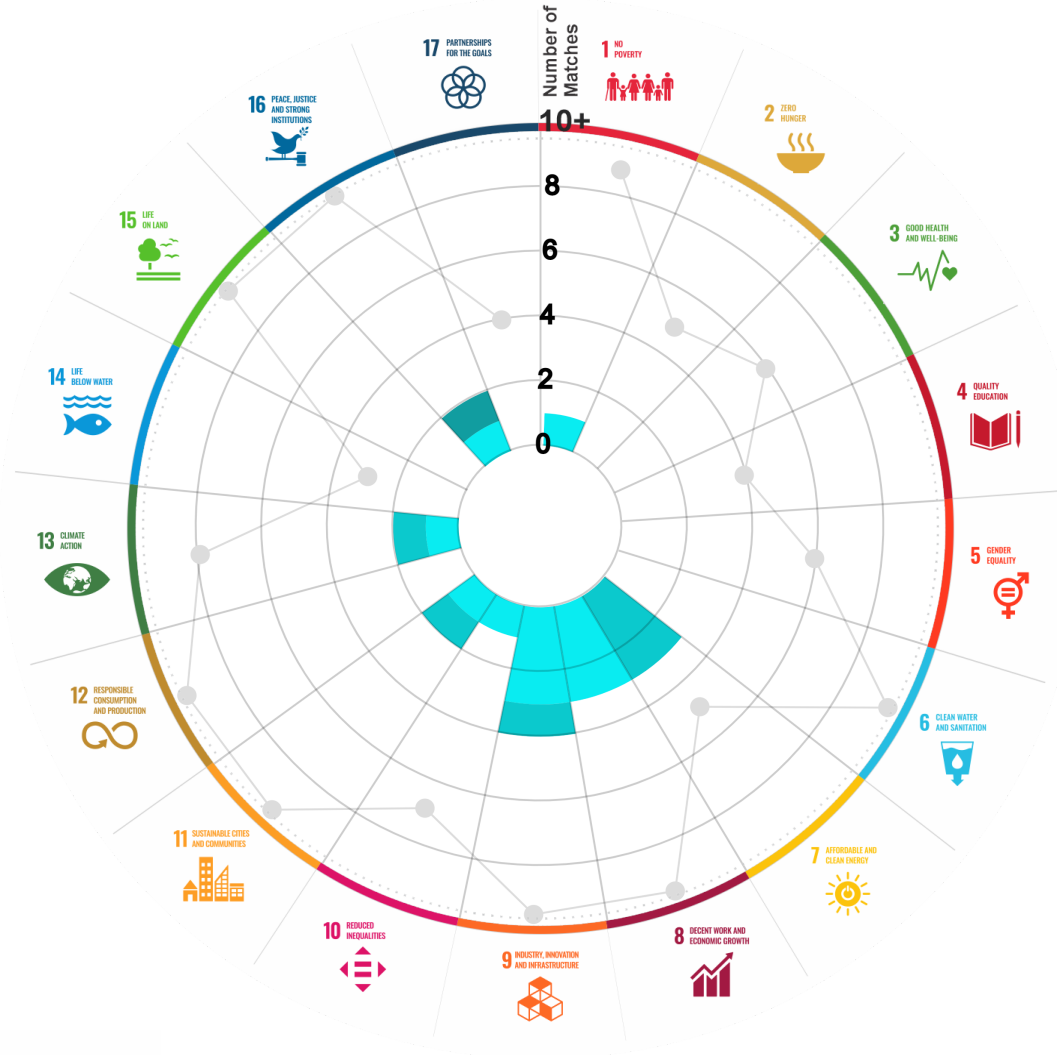
This section aims to present the potential alignment of the infrastructure project with the 17 Sustainable Development Goals (SDGs) of the 2030 Agenda. The relevance of this exercise resides in that it provides information to the actors of the infrastructure ecosystem for decision-making in investment that considers and promotes sustainable development.

Reading guide [View](#)

1. ALIGNMENT BY SUBSECTOR



2. ALIGNMENT BY SDG



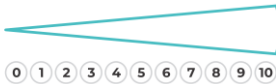
3. ALIGNMENT BY CRITERIA AND TARGETS

[View](#)



Explanation of the alignment of the sustainability criteria and the SDGs.

[View](#)



The tonality of the bars represents the level of detail of the information available from the IDB criteria and its potential alignment for each SDG, based on the scale: N.A., TIER 1, TIER 2 or TIER 3.

Number of times the project information coincides with the alignment of the IDB criteria and the SDGs.

Approximate reference to the number of maximum alignments a project can have between the IDB criteria and the targets of the SDGs.

PROJECT

DESIGN, CONSTRUCTION, OPERATION, MAINTENANCE, CONSERVATION AND EXPLOITATION OF THE TULTEPEC-"FELIPE ANGELES" INTERNATIONAL AIRPORT - PIRAMIDES HIGHWAY, IN THE STATE OF MEXICO.

SECTOR: TRANSPORT
SUBSECTOR: HIGHWAYS / BRIDGES

| | | | | |
|----------------------------|--|------------------------------|--|--|
| Type of Investment: | Greenfield | Banobras/Fonadin involvement | | |
| Short Name of the Project: | 0900 Tultepec - "Felipe Angeles" International Airport - Piramides Highway | | | |
| Contract Currency: | Estimated Investment MXN | Estimated Investment USD | Exchange rate (USD/MXN) used by the Ministry of Finance for the economic plan 2023 \$ 20.6 | |
| Mexican Pesos MXN | \$ 7,091,000,000 | \$ 344,223,300 | | |

DESCRIPTION

The project consists of the design, construction, operation, maintenance, conservation and exploitation of the approximately 27.1 km Tultepec - "Felipe Angeles" International Airport (AIFA, for its acronym in Spanish) - Piramides highway, divided into three sub-sections:

- from km 0 + 000 to 16 + 060 corresponds to an A4 type road with a 22.0 m crown width,
- from km 16 + 060 to 25 + 700 corresponds to a A2 type road with a 12.0 m crown width but with a future expansion to 4 lanes,
- from km 25 + 700 to 27 + 030 corresponds to an A4 type road with a 22.0 m crown width.

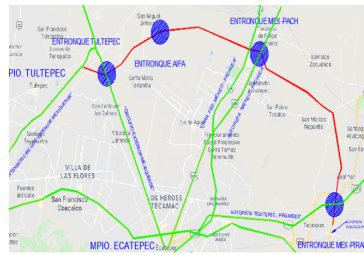
The project will communicate the area of Queretaro, Lake Guadalupe and Toluca, with the area of Piramides, Tulancingo and Tuxpan, namely the north and west with the eastern part of the Mexican Republic, with an important access to the "Felipe Angeles" International Airport, through an arch that will function as a bypass for the metropolitan area of the Municipality of Ecatepec.

Contract Scope: Design, Construction, Operation, Maintenance, Conservation, Exploitation

| | | | | | |
|-------------------|------------------|--------------------|---------------------------|-------|----------|
| Type of Project: | Public | Selection Process: | International Open Tender | Term: | 30 years |
| Type of Contract: | State Concession | Payment Source: | Project revenues / Rate | | |

Asset (s): Highway 27.10 KM-A4

GEOLOCATION



SPONSOR



Entity

Gobierno Estatal

Department

Sistema de Autopistas, Aeropuertos, Servicios Conexos y Auxiliares del Estado de México.

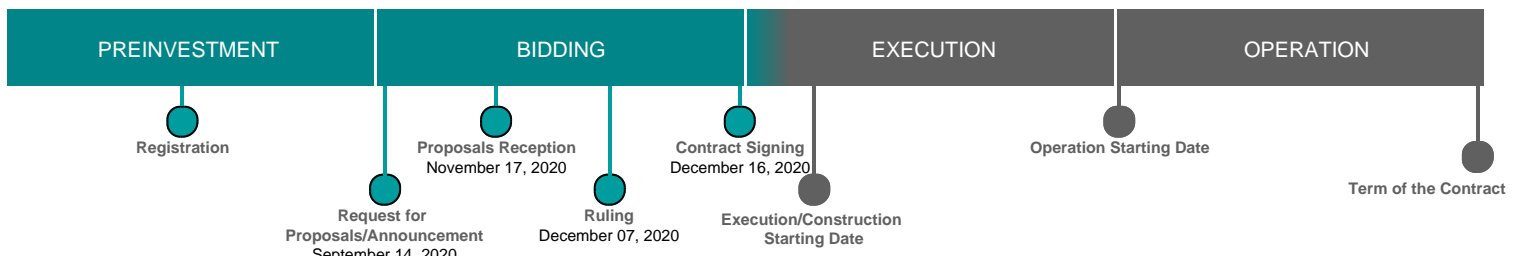
Contact

Jorge Iván Morales Pérez

E-mail

dirproy.saascaem@edomex.gob.mx

TIMELINE



Email: proyectosmexico@banobras.gob.mx



SHCP
SECRETARÍA DE HACIENDA
Y CRÉDITO PÚBLICO

BANOBRAS
BANCO NACIONAL DE OBRAS
Y SERVICIOS PÚBLICOS S.N.C.