



PROJECT: 0814 Toluca - Zitácuaro Highway and Valle de Bravo Branch

SECTOR:
Transport

SUBSECTOR:
Highways / bridges

STAGE ANALYZED:
Operation

YEAR OF UPDATE:
2020

[Guide to read this datasheet](#) 

Project's sustainability summary: The purpose of the project is the operation, maintenance and conservation of the Toluca-Zitácuaro highway and Valle de Bravo Branch to satisfy the tourist demand of the region and promote its economic development, considering measures to protect biodiversity and the use of solar farms in some of its road sections.



ECONOMIC AND FINANCIAL SUSTAINABILITY

EXAMPLE OF GOOD PRACTICES

Sustainability criteria	NA	T1	T2	T3
Economic and social returns				
Creation of employment opportunities and boost local productivity				
Financial sustainability of assets				
Detailed risk analysis				
Cash flow transparency and creditworthiness				
Infrastructure asset maintenance and optimal use				
Sustainability incentives				



ENVIRONMENTAL SUSTAINABILITY AND CLIMATE RESILIENCE

EXAMPLE OF GOOD PRACTICES
The project considers the use of solar farms to save energy in some of its road sections.

Sustainability criteria	NA	T1	T2	T3
Greenhouse gas emissions				
Climate risks, resilience and disaster risk management				
Impacts on biodiversity and native flora and fauna in the region				
Environmental impact of the Project				
Control and monitoring of pollutants				
Efficient use of resources and recycling strategies				
Efficient use of energy and renewable sources				
Preservation or enhancement of public spaces				



SOCIAL SUSTAINABILITY

EXAMPLE OF GOOD PRACTICES

Sustainability criteria	NA	T1	T2	T3
Reduction of poverty and access to basic services				
Integration of communities and other interested parties				
Integration of people with disabilities or special needs				
Effects of the project in the security of the region and in the health of workers and nearby communities				
Compliance with human and labor rights				
Cultural heritage and indigenous people				
Gender inclusion and women's economic empowerment through the project				
Equal distribution of benefits and compensations to communities				



INSTITUTIONAL SUSTAINABILITY

EXAMPLE OF GOOD PRACTICES
Includes an Environmental Training Program for its workers in order to be aware of the region conditions and the fulfillment of the environmental legislation.

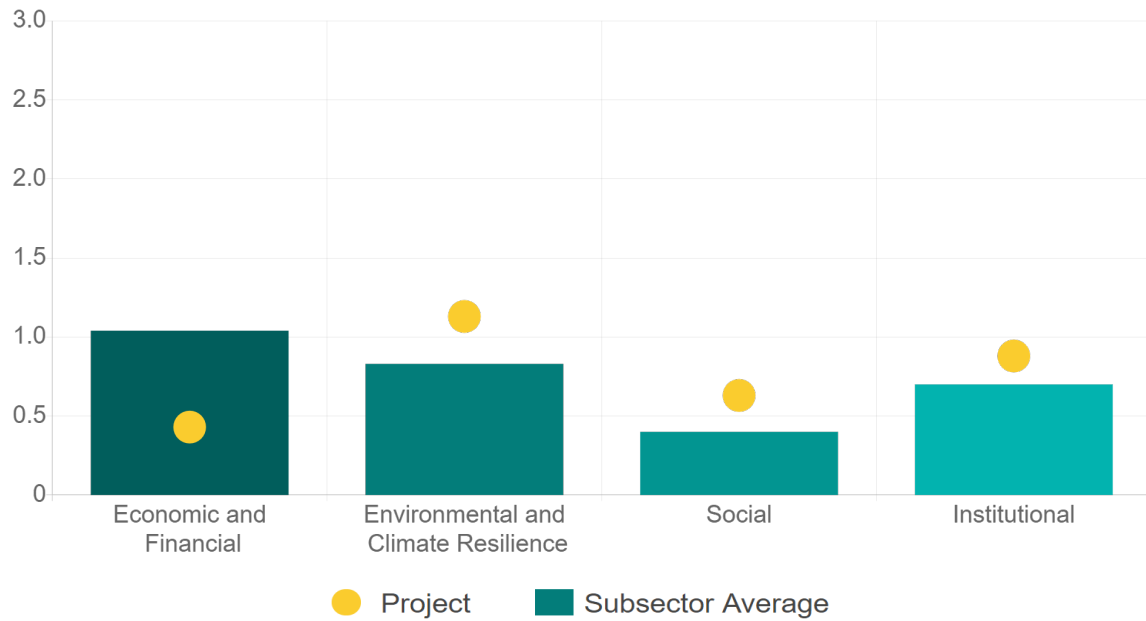
Sustainability criteria	NA	T1	T2	T3
Alignment with national and international strategies				
Sectoral and institutional integration				
Corporate sustainability, management and governance				
Transparency and anti-corruption protocols				
Legal requirements and compliance with social and environmental policies				
Development of more sustainable technologies and capacities				
Knowledge transfer in matters related to sustainability				
Pre-existing conditions and their monitoring				

Source of this project: Call / Public account data / MIA (Monumento-Lengua de Vaca road section) / MIA Resolution (Monumento-Lengua de Vaca road section) / MIA (Branch Valle de Bravo-Avandaro) / MIA Resolution (Branch Valle de Bravo-Avandaro) / Sustainability Report (Coconal)



Comparison of this project vs other projects of the same subsector

(Number of projects included: 62)



Methodological framework defined by the Inter-American Development Bank (IDB)

[View](#)



PROJECT: 0814 Toluca - Zitácuaro Highway and Valle de Bravo Branch

SECTOR:
Transport

SUBSECTOR:
Highways / bridges

STAGE ANALYZED:
Operation

YEAR OF UPDATE:
2020

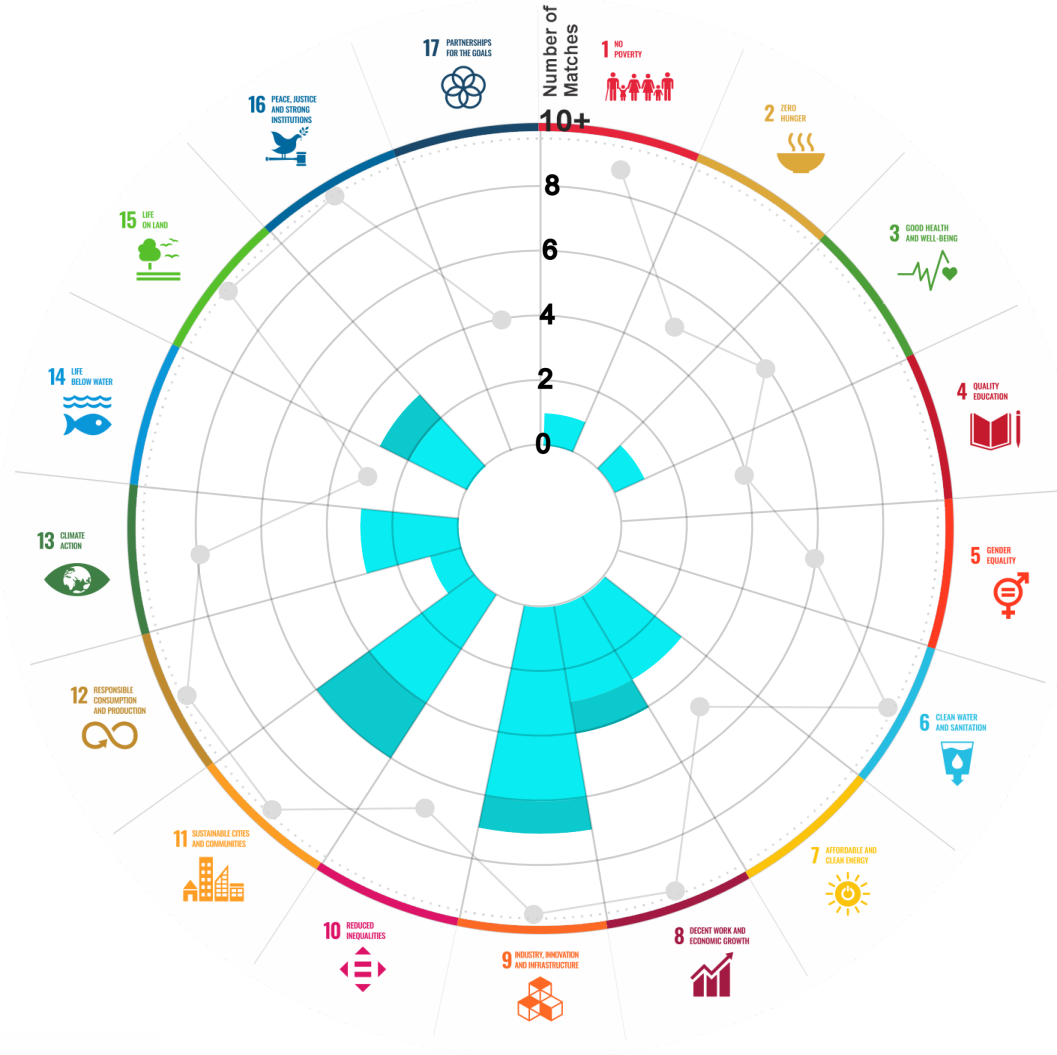
This section aims to present the potential alignment of the infrastructure project with the 17 Sustainable Development Goals (SDGs) of the 2030 Agenda. The relevance of this exercise resides in that it provides information to the actors of the infrastructure ecosystem for decision-making in investment that considers and promotes sustainable development.

Reading guide [View](#)

1. ALIGNMENT BY SUBSECTOR



2. ALIGNMENT BY SDG



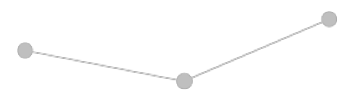
3. ALIGNMENT BY CRITERIA AND TARGETS

[View](#)



Explanation of the alignment of the sustainability criteria and the SDGs.

[View](#)



The tonality of the bars represents the level of detail of the information available from the IDB criteria and its potential alignment for each SDG, based on the scale: N.A., TIER 1, TIER 2 or TIER 3.


Number of times the project information coincides with the alignment of the IDB criteria and the SDGs.

Approximate reference to the number of maximum alignments a project can have between the IDB criteria and the targets of the SDGs.

P R O J E C T

CONSTRUCTION, OPERATION, MAINTENANCE, CONSERVATION AND EXPLOITATION OF THE TOLUCA - ZITÁCUARO HIGHWAY AND VALLE DE BRAVO BRANCH, IN THE STATE OF MEXICO.

SECTOR: TRANSPORT
SUBSECTOR: HIGHWAYS / BRIDGES

Type of Investment:	Brownfield	 Banobras/Fonadin involvement
Short Name of the Project:	0814 Toluca - Zitácuaro Highway and Valle de Bravo Branch	
Contract Currency:	Estimated Investment MXN	Estimated Investment USD
Mexican Pesos MXN	\$ 4,929,560,742	\$ 239,299,065
		Exchange rate (USD/MXN) used by the Ministry of Finance for the economic plan 2023 \$ 20.6

DESCRIPTION

The project consists of the construction, operation, maintenance, conservation and exploitation of the Toluca - Zitacuaro Highway in 3 stages:

- First stage: 84.8 km from the Toluca - Atacomulco (San Cayetano) highway to the junction "El Monumento" of the Toluca - Zitacuaro highway.
- Second stage: 29 km from the branch to Valle de Bravo and Paseo a Avandaro.
- Third stage: 15 km of the section Monumento - Lengua de Vaca in San José Villa de Allende.

(*) Project with Banobras and/or National Infrastructure Fund (Fonadin) involvement or support.

Contract Scope: Construction, Operation, Maintenance, Conservation, Exploitation

Type of Project:	Public / Private	Selection Process:	Public Bid	Term:	53 years
Type of Contract:	State Concession	Payment Source:	Project revenues / Rate		

Asset (s): Highway 128.80 KM

GEOLOCATION



SPONSOR

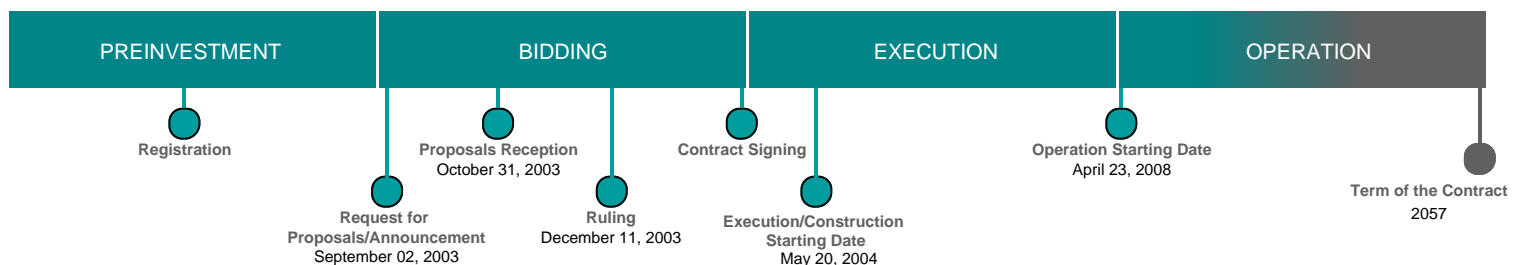
Entity

Gobierno Estatal

Department

Sistema de Autopistas, Aeropuertos, Servicios Conexos y Auxiliares del Estado de México

TIMELINE



Email: proyectosmexico@banobras.gob.mx



SHCP
SECRETARÍA DE HACIENDA
Y CRÉDITO PÚBLICO

BANOBRAS
BANCO NACIONAL DE OBRAS
Y SERVICIOS PÚBLICOS S.N.C.