



**PROJECT:** 0772 CFE: Empalme Branch Gas Pipeline

**SECTOR:**  
Hydrocarbons

**SUBSECTOR:**  
Midstream

**STAGE ANALYZED:**  
Operation

**YEAR OF UPDATE:**  
2020

[Guide to read this datasheet](#) 

**Project's sustainability summary:** The purpose of the project is the transportation of natural gas from the Sásabe-Guaymas and Guaymas-El Oro gas pipelines to the combined cycle power plants Empalme I and Empalme II, in the state of Sonora, in order to increase productivity and competitiveness in the Northwest region of the country and promote the use of natural gas as a clean fuel for the development of a low-carbon economy. Includes a [Show more...](#)



**ECONOMIC AND FINANCIAL SUSTAINABILITY**

EXAMPLE OF GOOD PRACTICES

Sustainability criteria	NA	T1	T2	T3
Economic and social returns				
Creation of employment opportunities and boost local productivity				
Financial sustainability of assets				
Detailed risk analysis				
Cash flow transparency and creditworthiness				
Infrastructure asset maintenance and optimal use				
Sustainability incentives				



**ENVIRONMENTAL SUSTAINABILITY AND CLIMATE RESILIENCE**

EXAMPLE OF GOOD PRACTICES

Considers environmental training and learning of good practices among its workers. The developer uses solar panels to back up electricity generation

Sustainability criteria	NA	T1	T2	T3
Greenhouse gas emissions				
Climate risks, resilience and disaster risk management				
Impacts on biodiversity and native flora and fauna in the region				
Environmental impact of the Project				
Control and monitoring of pollutants				
Efficient use of resources and recycling strategies				
Efficient use of energy and renewable sources				
Preservation or enhancement of public spaces				



**SOCIAL SUSTAINABILITY**

EXAMPLE OF GOOD PRACTICES

Sustainability criteria	NA	T1	T2	T3
Reduction of poverty and access to basic services				
Integration of communities and other interested parties				
Integration of people with disabilities or special needs				
Effects of the project in the security of the region and in the health of workers and nearby communities				
Compliance with human and labor rights				
Cultural heritage and indigenous people				
Gender inclusion and women's economic empowerment through the project				
Equal distribution of benefits and compensations to communities				



**INSTITUTIONAL SUSTAINABILITY**

EXAMPLE OF GOOD PRACTICES

The project is aligned to the Sustainable Development Goals regarding the creation of infrastructure for energy transition, in safety conditions.

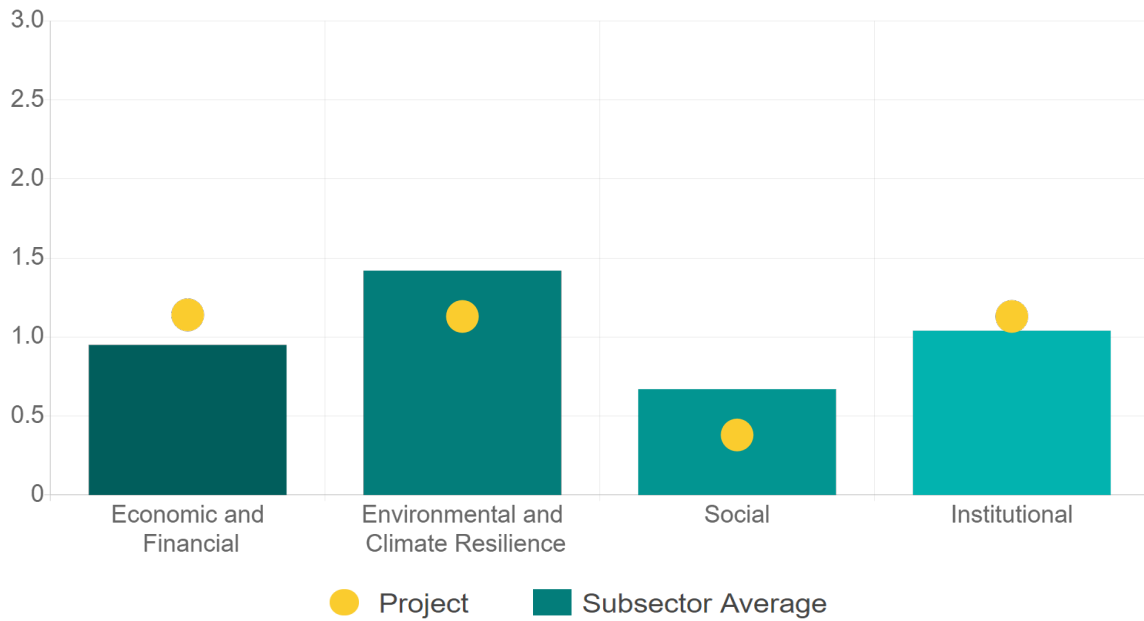
Sustainability criteria	NA	T1	T2	T3
Alignment with national and international strategies				
Sectoral and institutional integration				
Corporate sustainability, management and governance				
Transparency and anti-corruption protocols				
Legal requirements and compliance with social and environmental policies				
Development of more sustainable technologies and capacities				
Knowledge transfer in matters related to sustainability				
Pre-existing conditions and their monitoring				

**Source of this project:** Contract / Environmental Impact Assessment (MIA) / MIA Resolution / MIA Resolution (Modification to project) / Annual Report (lenova) / Sustainability Report (lenova)



### Comparison of this project vs other projects of the same subsector

(Number of projects included: 9)



Methodological framework defined by the Inter-American Development Bank (IDB)

View



**PROJECT:** 0772 CFE: Empalme Branch Gas Pipeline

**SECTOR:**  
Hydrocarbons

**SUBSECTOR:**  
Midstream

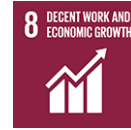
**STAGE ANALYZED:**  
Operation

**YEAR OF UPDATE:**  
2020

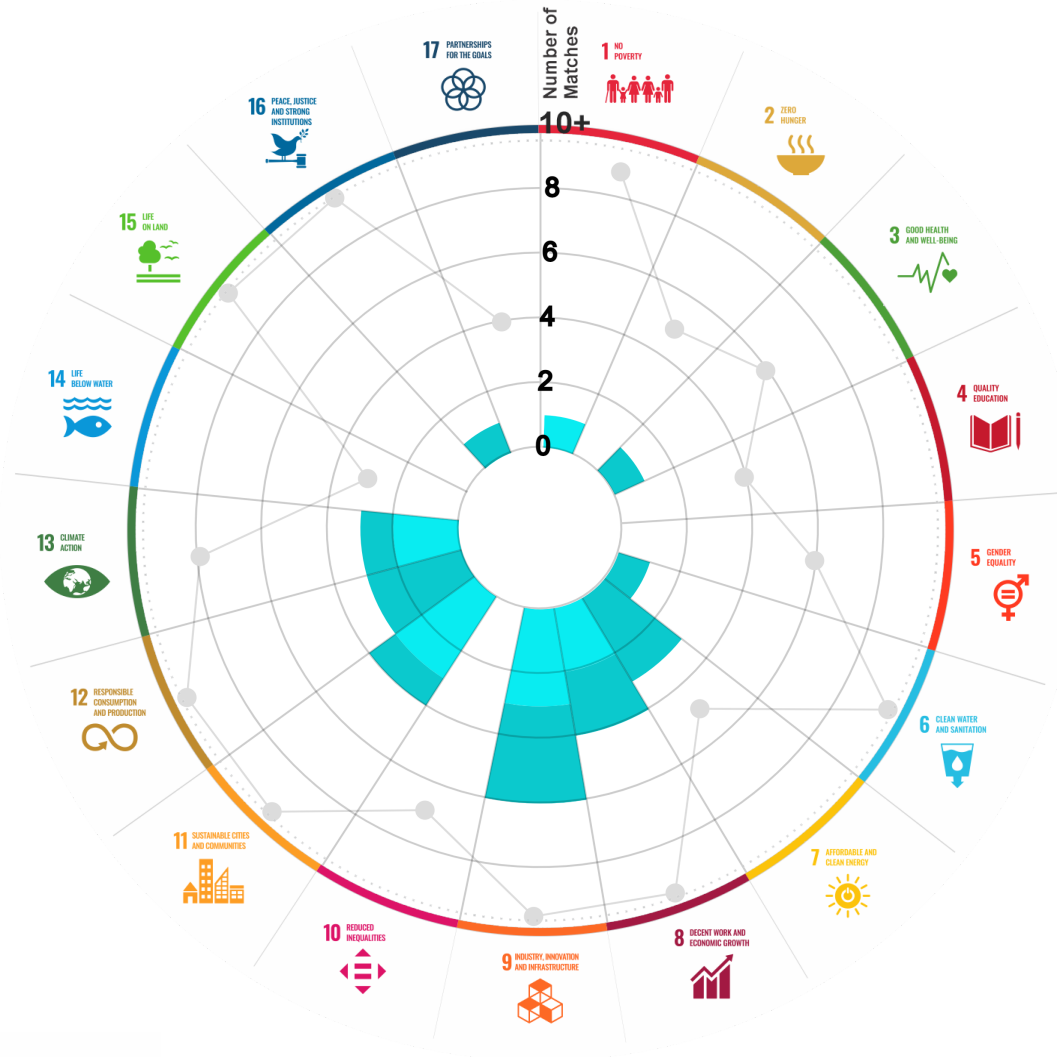
This section aims to present the potential alignment of the infrastructure project with the 17 Sustainable Development Goals (SDGs) of the 2030 Agenda. The relevance of this exercise resides in that it provides information to the actors of the infrastructure ecosystem for decision-making in investment that considers and promotes sustainable development.

Reading guide [View](#)

## 1. ALIGNMENT BY SUBSECTOR



## 2. ALIGNMENT BY SDG



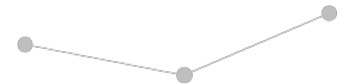
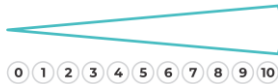
## 3. ALIGNMENT BY CRITERIA AND TARGETS

[View](#)



Explanation of the alignment of the sustainability criteria and the SDGs.

[View](#)



The tonality of the bars represents the level of detail of the information available from the IDB criteria and its potential alignment for each SDG, based on the scale: N.A., TIER 1, TIER 2 or TIER 3.

Number of times the project information coincides with the alignment of the IDB criteria and the SDGs.

Approximate reference to the number of maximum alignments a project can have between the IDB criteria and the targets of the SDGs.

## P R O J E C T

DESIGN, CONSTRUCTION, OPERATION AND MAINTENANCE OF THE GAS PIPELINE "RAMAL EMPALME" LOCATED IN THE STATE OF SONORA.

SECTOR: HYDROCARBONS  
SUBSECTOR: MIDSTREAM

Type of Investment: Brownfield

Short Name of the Project: 0772 CFE: Empalme Branch Gas Pipeline

Contract Currency:  
US Dollars USD

Estimated Investment MXN  
\$ 223,415,528

Estimated Investment USD  
\$ 10,845,414

Exchange rate (USD/MXN) used by the Ministry of Finance for the economic plan 2023 \$ 20.6

### DESCRIPTION

The project consists of the design, construction, operation and maintenance of a gas pipeline with a capacity of 226 million cubic feet per day (MCFD). The approximate length of the gas pipeline is 20 km and 20 and 16 inches diameter.

The Ramal Empalme gas pipeline transports natural gas from the Sásabe-Guaymas and Guaymas-El Oro gas pipelines to the Empalme I and Empalme II combined cycle power plants in the state of Sonora.

Contract Scope: Design, Construction, Operation, Maintenance

Type of Project: Public / Private

Selection Process: International Open Tender

Term: 25 years

Type of Contract: Provision of services

Payment Source: Rate

Asset (s): Gas Pipeline 20 KM

### GEOLOCATION



### SPONSOR



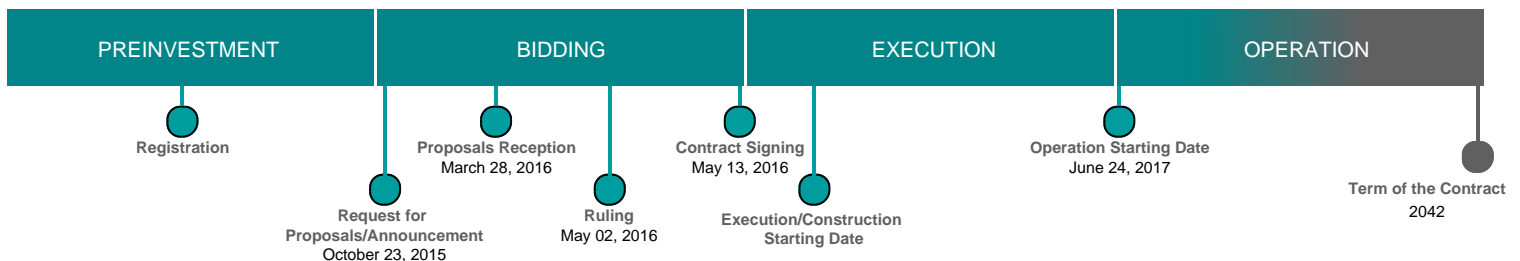
#### Entity

Comisión Federal de Electricidad

#### Department

Subdirección de Negocios No Regulados

### TIMELINE



Email: [proyectosmexico@banobras.gob.mx](mailto:proyectosmexico@banobras.gob.mx)



**SHCP**

SECRETARÍA DE HACIENDA  
Y CRÉDITO PÚBLICO

**BANOBRAS**

BANCO NACIONAL DE OBRAS  
Y SERVICIOS PÚBLICOS S.N.C.