

PROJECT: 0077 Tapachula-Talisman Highway with Branch to Ciudad Hidalgo

SECTOR:
Transport

SUBSECTOR:
Highways / bridges

STAGE ANALYZED:
Operation

YEAR OF UPDATE:
2022

[Guide to read this datasheet](#) 

Project's sustainability summary: The purpose of the project is to contribute to the connectivity and commercial activity of the southeastern region of Chiapas, as well as to communicate the southern border of Mexico with Guatemala. The highway reduces travel time and increases road safety.



ECONOMIC AND FINANCIAL SUSTAINABILITY

EXAMPLE OF GOOD PRACTICES

Sustainability criteria	NA	T1	T2	T3
Economic and social returns	█			
Creation of employment opportunities and boost local productivity		█		
Financial sustainability of assets		█		
Detailed risk analysis		█	█	█
Cash flow transparency and creditworthiness		█		
Infrastructure asset maintenance and optimal use		█		
Sustainability incentives	█			



ENVIRONMENTAL SUSTAINABILITY AND CLIMATE RESILIENCE

EXAMPLE OF GOOD PRACTICES

The concessionaire calculates the carbon footprint of its business lines.

Sustainability criteria	NA	T1	T2	T3
Greenhouse gas emissions		█		
Climate risks, resilience and disaster risk management		█		
Impacts on biodiversity and native flora and fauna in the region		█		
Environmental impact of the Project		█		
Control and monitoring of pollutants		█		
Efficient use of resources and recycling strategies	█			
Efficient use of energy and renewable sources	█			
Preservation or enhancement of public spaces	█			



SOCIAL SUSTAINABILITY

EXAMPLE OF GOOD PRACTICES

Sustainability criteria	NA	T1	T2	T3
Reduction of poverty and access to basic services		█		
Integration of communities and other interested parties		█		
Integration of people with disabilities or special needs		█		
Effects of the project in the security of the region and in the health of workers and nearby communities		█		
Compliance with human and labor rights		█		
Cultural heritage and indigenous people		█		
Gender inclusion and women's economic empowerment through the project		█		
Equal distribution of benefits and compensations to communities		█		



INSTITUTIONAL SUSTAINABILITY

EXAMPLE OF GOOD PRACTICES

The concessionaire implements an integrity policy for its operations and relationship with partners.

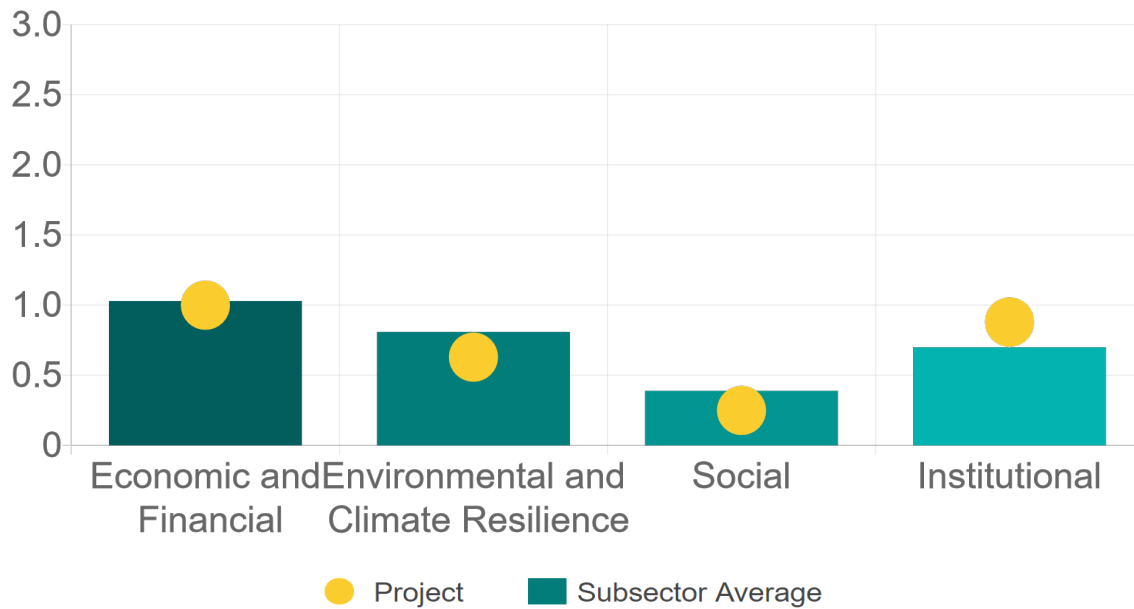
Sustainability criteria	NA	T1	T2	T3
Alignment with national and international strategies		█		
Sectoral and institutional integration		█		
Corporate sustainability, management and governance		█		
Transparency and anti-corruption protocols		█	█	█
Legal requirements and compliance with social and environmental policies		█		
Development of more sustainable technologies and capacities		█		
Knowledge transfer in matters related to sustainability		█		
Pre-existing conditions and their monitoring		█		

Source of this project: Environmental Impact Assessment / AZVI Corporate Sustainability / Concession Title / Amendment to Concession Title / Financial Information



Comparison of this project vs other projects of the same subsector

(Number of projects included: 63)



Methodological framework defined by the Inter-American Development Bank (IDB)

[View](#)



PROJECT: 0077 Tapachula-Talisman Highway with Branch to Ciudad Hidalgo

SECTOR:
Transport

SUBSECTOR:
Highways / bridges

STAGE ANALYZED:
Operation

YEAR OF UPDATE:
2022

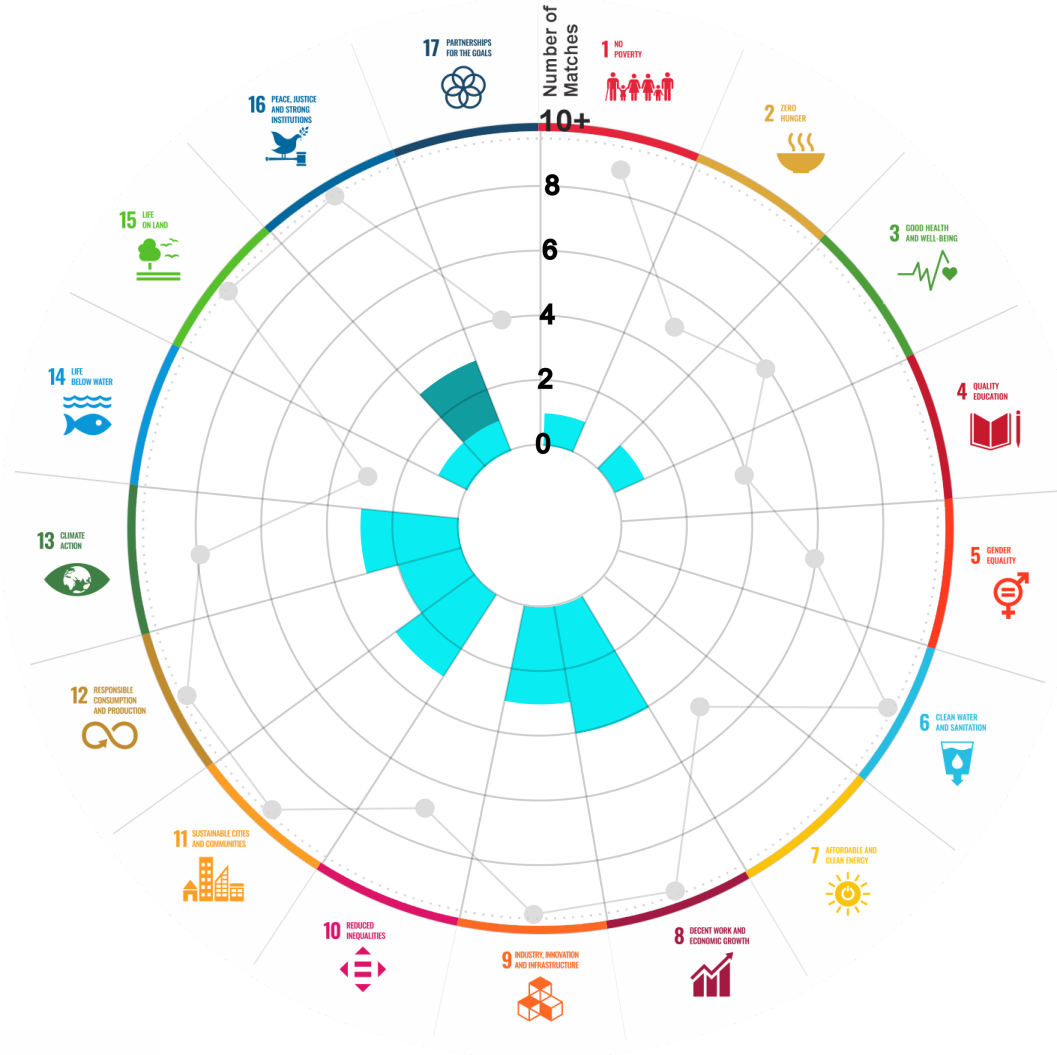
This section aims to present the potential alignment of the infrastructure project with the 17 Sustainable Development Goals (SDGs) of the 2030 Agenda. The relevance of this exercise resides in that it provides information to the actors of the infrastructure ecosystem for decision-making in investment that considers and promotes sustainable development.

Reading guide [View](#)

1. ALIGNMENT BY SUBSECTOR



2. ALIGNMENT BY SDG



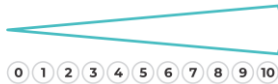
3. ALIGNMENT BY CRITERIA AND TARGETS

[View](#)



Explanation of the alignment of the sustainability criteria and the SDGs.

[View](#)



The tonality of the bars represents the level of detail of the information available from the IDB criteria and its potential alignment for each SDG, based on the scale: N.A., TIER 1, TIER 2 or TIER 3.

Number of times the project information coincides with the alignment of the IDB criteria and the SDGs.

Approximate reference to the number of maximum alignments a project can have between the IDB criteria and the targets of the SDGs.

PROJECT

EXTENSION, MODERNIZATION, OPERATION, MAINTENANCE AND CONSERVATION OF THE TAPACHULA-TALISMAN TOLL FREE HIGHWAY WITH BRANCH TO HIDALGO CITY IN THE STATE OF CHIAPAS.

SECTOR: TRANSPORT
SUBSECTOR: HIGHWAYS / BRIDGES

Type of Investment: Brownfield

Short Name of the Project: 0077 Tapachula-Talisman Highway with Branch to Ciudad Hidalgo

Contract Currency:	Estimated Investment MXN	Estimated Investment USD	Exchange rate (USD/MXN) used by the Ministry of Finance for the economic plan 2023 \$ 20.6
Mexican Pesos MXN	\$ 1,031,000,000	\$ 50,048,543	

DESCRIPTION

ORIGINAL CONCESSION (Nov. 28, 2006). Conserve, maintain and operate the 45.1 km long Tapachula-Talisman toll-free highway of federal jurisdiction with branch to Hidalgo City, including rehabilitation and extension. The concessionary has the exclusive right to subscribe the PPP agreement with the Federal Government. The concession includes the right-of-way, auxiliary services, accessories, works and constructions.

FIRST MODIFICATION (Mar. 5, 2009). Several problems related to the right-of-way were presented and the Concession Title was modified to generate a new provision of services agreement, modifying the length of the highway to 39.05 Km.

(*) Project with Banobras and/or National Infrastructure Fund (Fonadin) involvement or support.

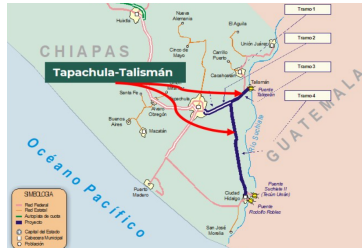
Contract Scope: Extension, Modernization, Operation, Maintenance, Conservation

Type of Project: Public / Private Selection Process: International Open Tender Term: 20 years

Type of Contract: Concession / Provision of Services Payment Source: Budgetary

Asset (s): Highway 39.05 KM

GEOLOCATION



SPONSOR

Entity

Secretaría de Infraestructura, Comunicaciones y Transportes

Department

Dirección General de Desarrollo Carretero

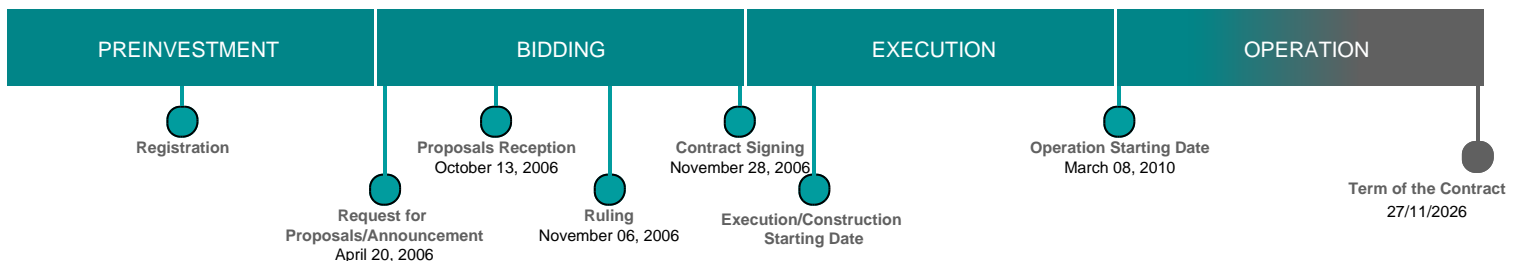
Contact

Fernando Palma Soto / Director General Adjunto de Seguimiento de Concesiones de Autopistas

E-mail

fpalmaso@sct.gob.mx

TIMELINE



Email: proyectosmexico@banobras.gob.mx



SHCP
SECRETARÍA DE HACIENDA
Y CRÉDITO PÚBLICO

BANOBRAS
BANCO NACIONAL DE OBRAS
Y SERVICIOS PÚBLICOS S.N.C.