



PROJECT: 0140 Cardel-Poza Rica Highway, Laguna Verde-Gutierrez Zamora Section

SECTOR:
Transport

SUBSECTOR:
Highways / bridges

STAGE ANALYZED:
Execution

YEAR OF UPDATE:
2020

[Guide to read this datasheet](#) 

Project's sustainability summary: The Project responds to the deficient conditions in the Laguna Verde-Gutiérrez Zamora highway section, and the high number of accidents reported annually, by offering an alternative route to the current one.



ECONOMIC AND FINANCIAL SUSTAINABILITY

EXAMPLE OF GOOD PRACTICES
In order to keep insurance policies updated, the risk study should be carried out every 3 years.

Sustainability criteria	NA	T1	T2	T3
Economic and social returns		█	█	
Creation of employment opportunities and boost local productivity				
Financial sustainability of assets		█	█	
Detailed risk analysis		█	█	█
Cash flow transparency and creditworthiness		█	█	
Infrastructure asset maintenance and optimal use				
Sustainability incentives				



ENVIRONMENTAL SUSTAINABILITY AND CLIMATE RESILIENCE

EXAMPLE OF GOOD PRACTICES
In response to the climatic risks or natural disasters that the Project may face, a Contingency Fund has been designated, in addition to contracting insurance.


Sustainability criteria	NA	T1	T2	T3
Greenhouse gas emissions				
Climate risks, resilience and disaster risk management		█		
Impacts on biodiversity and native flora and fauna in the region				
Environmental impact of the Project				
Control and monitoring of pollutants				
Efficient use of resources and recycling strategies				
Efficient use of energy and renewable sources				
Preservation and enhancement of public spaces				



SOCIAL SUSTAINABILITY

EXAMPLE OF GOOD PRACTICES

Sustainability criteria	NA	T1	T2	T3
Reduction of poverty and access to basic services				
Integration of communities and other interested parties				
Integration of people with disabilities or special needs				
Effects of the project in the security of the region and in the health of workers and nearby communities				
Compliance with human and labor rights				
Cultural heritage and indigenous people				
Gender inclusion and women's economic empowerment through the project				
Equal distribution of benefits and compensations to communities				



INSTITUTIONAL SUSTAINABILITY

EXAMPLE OF GOOD PRACTICES
The Concessionaire has a strategy for gender equality that contains specific objectives, measures and indicators.

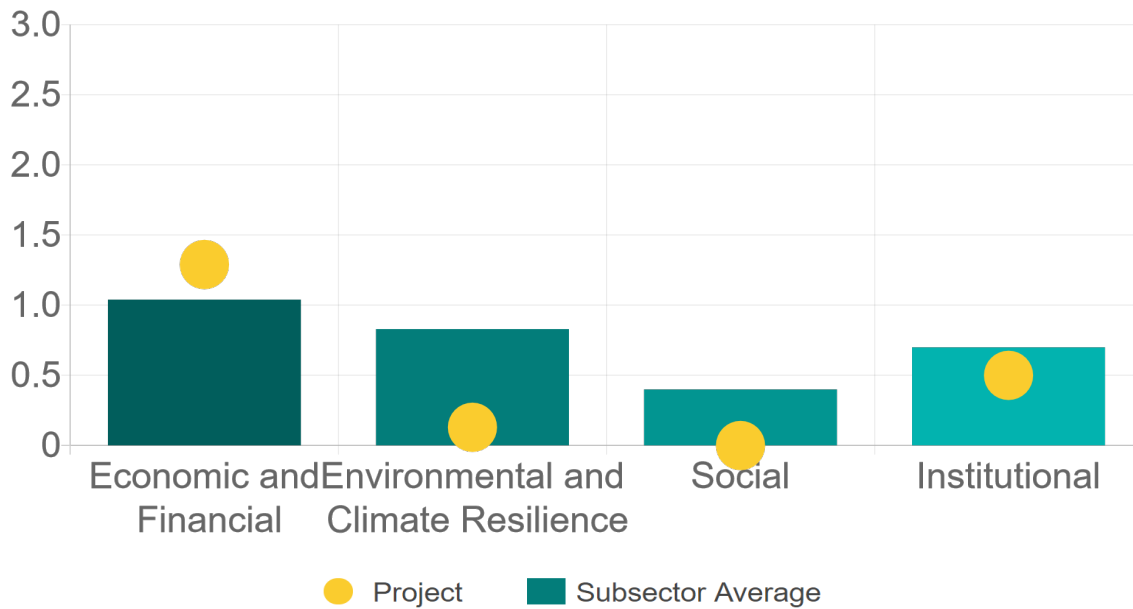
Sustainability criteria	NA	T1	T2	T3
Alignment with national and international strategies		█		
Sectoral and institutional integration				
Corporate sustainability, management and governance		█		
Transparency and anti-corruption protocols		█		
Legal requirements and compliance with social and environmental policies				
Development of more sustainable technologies and capacities				
Knowledge transfer in matters related to sustainability				
Pre-existing conditions and their monitoring				

Source of this project: Cost-Benefit Analysis Highway Cardel-Poza Rica, Section Laguna Verde-Gutiérrez Zamora / Mota-Engil Sustainability Notebook / Mota-Engil Strategy for Equality and Non-Discrimination / Contribution Agreement Cardel-Poza Rica Highway, Section Laguna Verde-Gutiérrez Zamora



Comparison of this project vs other projects of the same subsector

(Number of projects included: 62)



Methodological framework defined by the Inter-American Development Bank (IDB)

[View](#)



PROJECT: 0140 Cardel-Poza Rica Highway, Laguna Verde-Gutierrez Zamora Section

SECTOR:
Transport

SUBSECTOR:
Highways / bridges

STAGE ANALYZED:
Execution

YEAR OF UPDATE:
2020

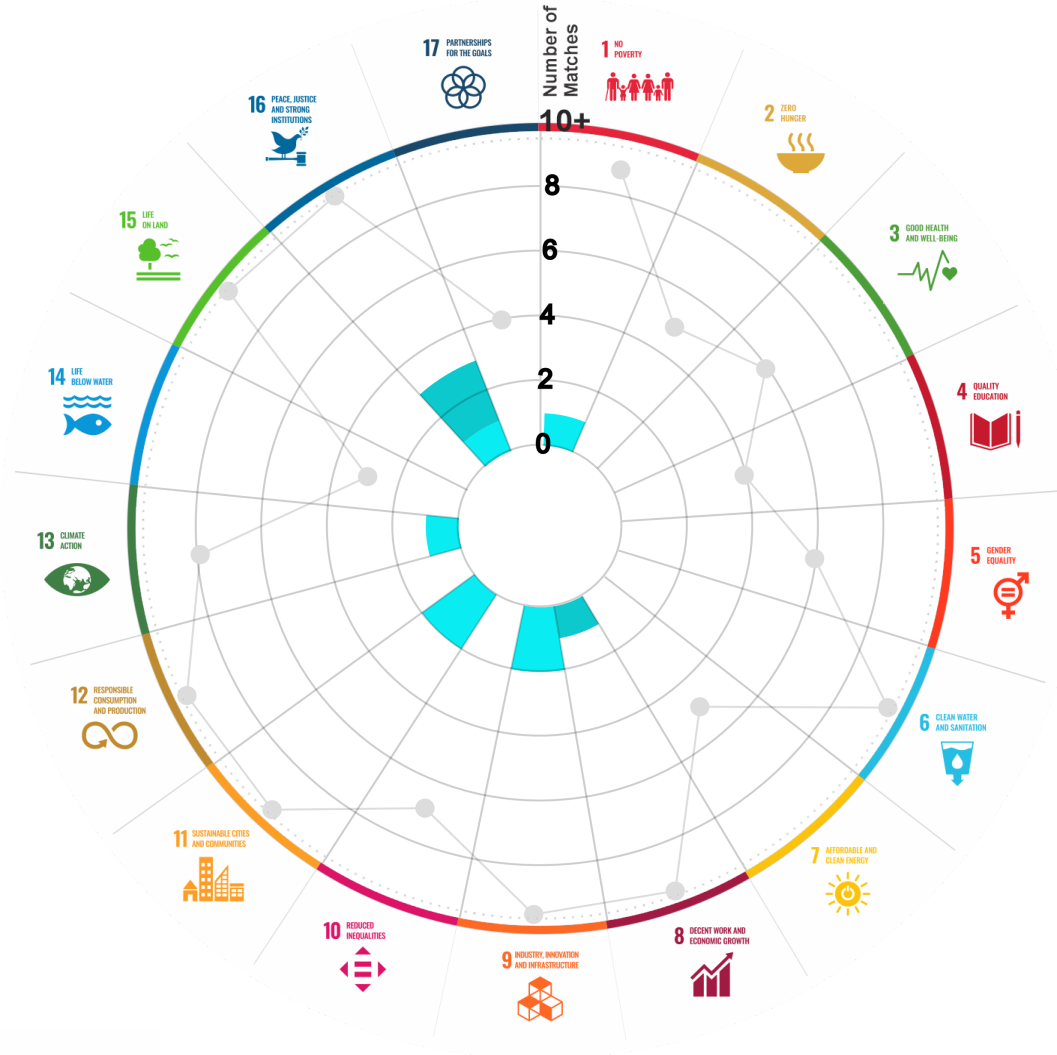
This section aims to present the potential alignment of the infrastructure project with the 17 Sustainable Development Goals (SDGs) of the 2030 Agenda. The relevance of this exercise resides in that it provides information to the actors of the infrastructure ecosystem for decision-making in investment that considers and promotes sustainable development.

Reading guide [View](#)

1. ALIGNMENT BY SUBSECTOR



2. ALIGNMENT BY SDG



3. ALIGNMENT BY CRITERIA AND TARGETS

[View](#)

Explanation of the alignment of the sustainability criteria and the SDGs.

[View](#)



The tonality of the bars represents the level of detail of the information available from the IDB criteria and its potential alignment for each SDG, based on the scale: N.A., TIER 1, TIER 2 or TIER 3.

Number of times the project information coincides with the alignment of the IDB criteria and the SDGs.

Approximate reference to the number of maximum alignments a project can have between the IDB criteria and the targets of the SDGs.

P R O J E C T

CONSTRUCTION, OPERATION, MAINTENANCE, CONSERVATION AND EXPLOITATION OF LAGUNA VERDE-GUITIERREZ ZAMORA SECTION OF THE CARDEL-POZA RICA TOLL HIGHWAY, IN THE STATE OF VERACRUZ.

SECTOR: TRANSPORT
SUBSECTOR: HIGHWAYS / BRIDGES

Type of Investment: Brownfield Banobras/Fonadin involvement

Short Name of the Project: 0140 Cardel-Poza Rica Highway, Laguna Verde-Gutierrez Zamora Section

Contract Currency:	Estimated Investment MXN	Estimated Investment USD	Exchange rate (USD/MXN) used by the Ministry of Finance for the economic plan 2023 \$ 20.6
Mexican Pesos MXN	\$ 4,640,000,000	\$ 225,242,718	

DESCRIPTION

ORIGINAL CONCESSION (July 31, 2014). Construct, operate, maintain, conserve and exploit the Laguna Verde-Gutierrez Zamora section of the Cardel-Poza Rica toll highway, In the State of Veracruz. The concession includes the right-of-way, works, constructions and other goods and accessories.

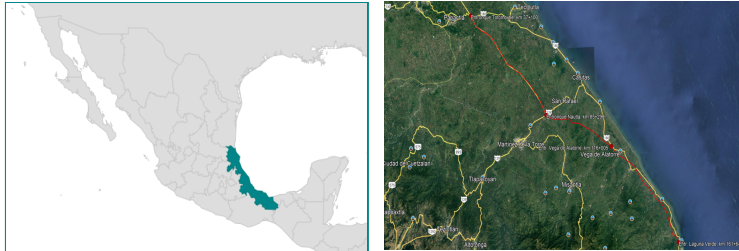
Contract Scope: Construction, Operation, Maintenance, Conservation, Exploitation

Type of Project: Public / Private Selection Process: International Open Tender Term: 30 years

Type of Contract: Concession Payment Source: Project revenues / Rate

Asset (s): Highway 128.80 KM

GEOLOCATION



SPONSOR

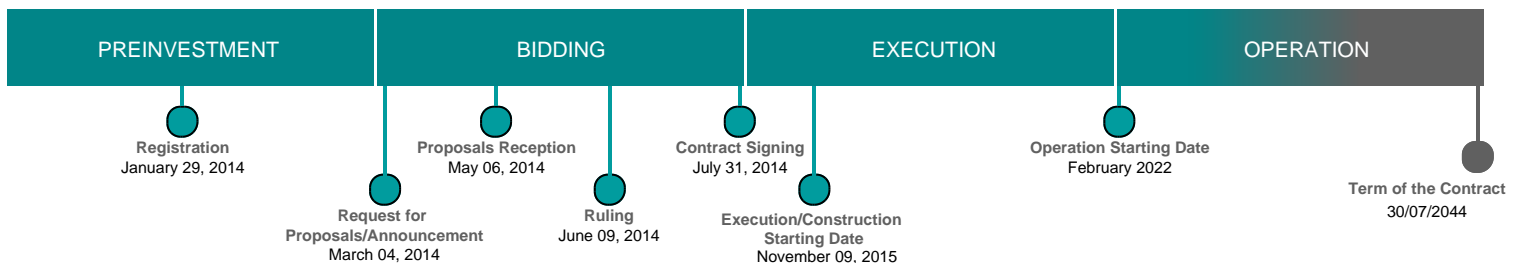
Entity: Secretaría de Infraestructura, Comunicaciones y Transportes

Department: Dirección General de Desarrollo Carretero

Contact: Alejandro Rescala Pérez

E-mail: arescala@sct.gob.mx

TIMELINE



Email: proyectosmexico@banobras.gob.mx



SHCP
SECRETARÍA DE HACIENDA
Y CRÉDITO PÚBLICO

BANOBRAS
BANCO NACIONAL DE OBRAS
Y SERVICIOS PÚBLICOS S.N.C.