



PROJECT: 0078 Rio Verde-Ciudad Valles Highway

SECTOR:
Transport

SUBSECTOR:
Highways / bridges

STAGE ANALYZED:
Operation

YEAR OF UPDATE:
2025

[Guide to read this datasheet](#) 


Project's sustainability summary: The project involves the expansion and modernization of the Rio Verde - Ciudad Valles highway, with the aim of improving road conditions to provide greater safety and reduce travel times for users.



ECONOMIC AND FINANCIAL SUSTAINABILITY

EXAMPLE OF GOOD PRACTICES
Project cash flows are reported periodically, allowing for monitoring of its economic solvency.

Sustainability criteria	NA	T1	T2	T3
Economic and social returns				
Creation of employment opportunities and boost local productivity				
Financial sustainability of assets				
Detailed risk analysis				
Cash flow transparency and creditworthiness				
Infrastructure asset maintenance and optimal use				
Sustainability incentives				



ENVIRONMENTAL SUSTAINABILITY AND CLIMATE RESILIENCE

EXAMPLE OF GOOD PRACTICES
The implementation of a reforestation program is planned as a compensatory measure to mitigate smoke emissions generated by vehicular traffic during the project's operation phase.

Sustainability criteria	NA	T1	T2	T3
Greenhouse gas emissions				
Climate risks, resilience and disaster risk management				
Impacts on biodiversity and native flora and fauna in the region				
Environmental impact of the Project				
Control and monitoring of pollutants				
Efficient use of resources and recycling strategies				
Efficient use of energy and renewable sources				
Preservation or enhancement of public spaces				



SOCIAL SUSTAINABILITY

EXAMPLE OF GOOD PRACTICES

Sustainability criteria	NA	T1	T2	T3
Reduction of poverty and access to basic services				
Integration of communities and other interested parties				
Integration of people with disabilities or special needs				
Effects of the project in the security of the region and in the health of workers and nearby communities				
Compliance with human and labor rights				
Cultural heritage and indigenous people				
Gender inclusion and women's economic empowerment through the project				
Equal distribution of benefits and compensations to communities				



INSTITUTIONAL SUSTAINABILITY

EXAMPLE OF GOOD PRACTICES
The project's participation in investment vehicles involves the periodic submission of reports to the Mexican Stock Exchange, ensuring transparency and the timely disclosure of relevant information

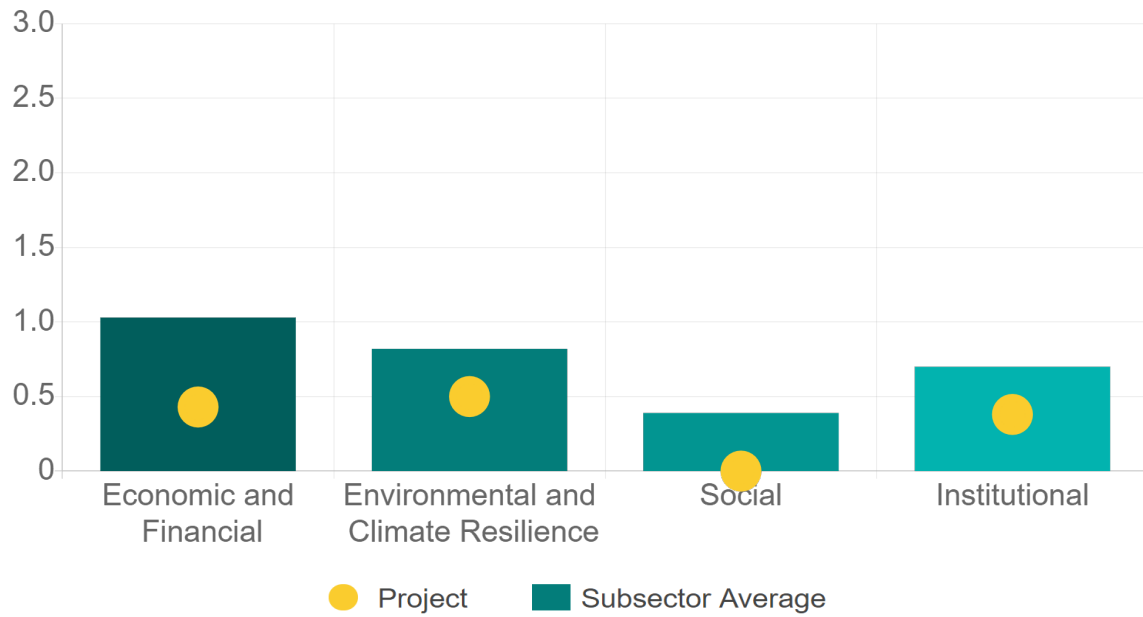
Sustainability criteria	NA	T1	T2	T3
Alignment with national and international strategies				
Sectoral and institutional integration				
Corporate sustainability, management and governance				
Transparency and anti-corruption protocols				
Legal requirements and compliance with social and environmental policies				
Development of more sustainable technologies and capacities				
Knowledge transfer in matters related to sustainability				
Pre-existing conditions and their monitoring				

Source of this project: Concession Title Highway Rio Verdes-Ciudad Valles / Call DOF / First amendment to the title / Environmental Impact Assessment (24SL2007V0002) / Federal Expenditure Budget 2024 / Federal Roads, Bridges and Autotransport Law / FEXI 2Q24 Results Report



Comparison of this project vs other projects of the same subsector

(Number of projects included: 63)



Methodological framework defined by the Inter-American Development Bank (IDB)

[View](#)



PROJECT: 0078 Rio Verde-Ciudad Valles Highway

SECTOR:
Transport

SUBSECTOR:
Highways / bridges

STAGE ANALYZED:
Operation

YEAR OF UPDATE:
2025

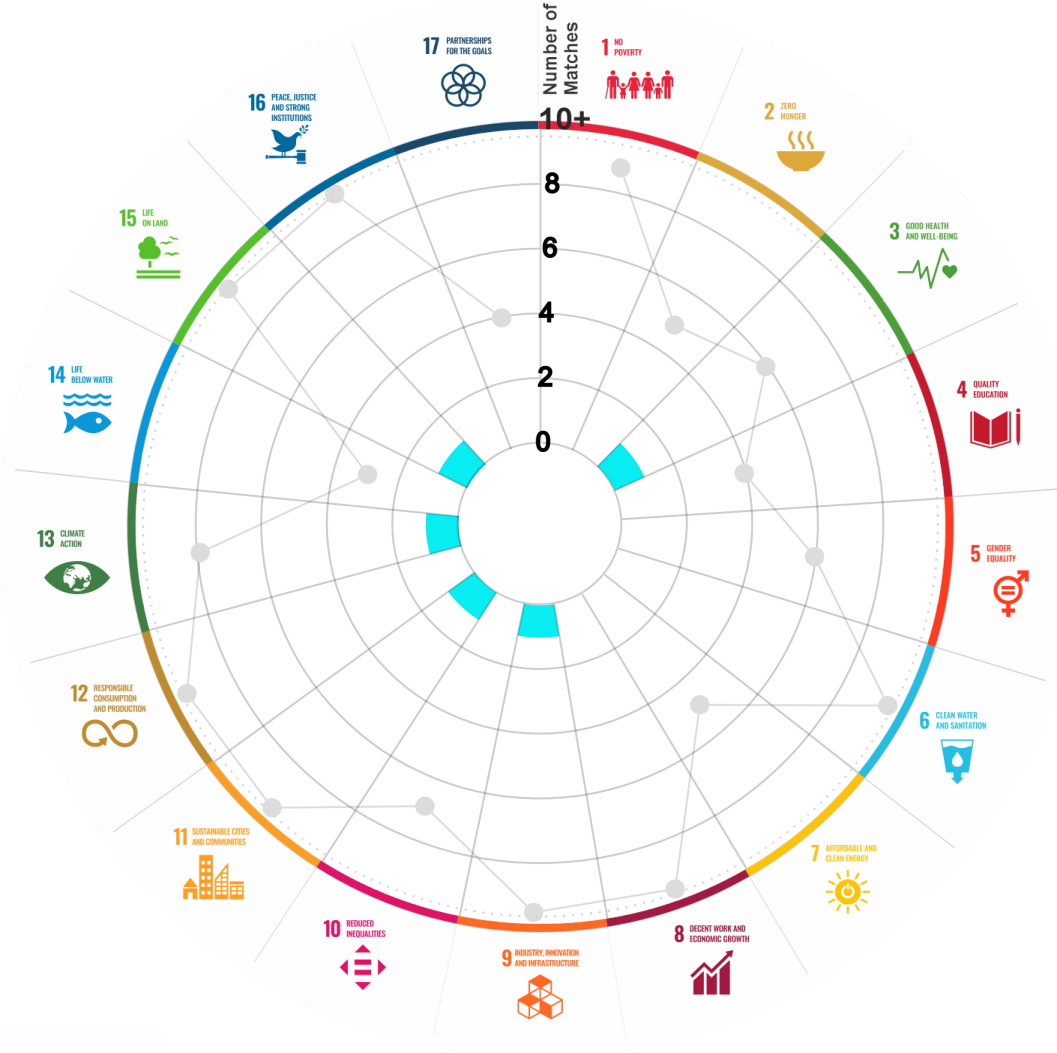
This section aims to present the potential alignment of the infrastructure project with the 17 Sustainable Development Goals (SDGs) of the 2030 Agenda. The relevance of this exercise resides in that it provides information to the actors of the infrastructure ecosystem for decision-making in investment that considers and promotes sustainable development.

Reading guide [View](#)

1. ALIGNMENT BY SUBSECTOR



2. ALIGNMENT BY SDG



3. ALIGNMENT BY CRITERIA AND TARGETS

[View](#)

Explanation of the alignment of the sustainability criteria and the SDGs.

[View](#)



The tonality of the bars represents the level of detail of the information available from the IDB criteria and its potential alignment for each SDG, based on the scale: N.A., TIER 1, TIER 2 or TIER 3.

Number of times the project information coincides with the alignment of the IDB criteria and the SDGs.

Approximate reference to the number of maximum alignments a project can have between the IDB criteria and the targets of the SDGs.



P R O J E C T

CONSTRUCTION, CONSERVATION, MAINTENANCE AND OPERATION OF THE RIOVERDE - CIUDAD VALLES HIGHWAY SECTIONS, IN THE STATE OF SAN LUIS POTOSI.

SECTOR: TRANSPORT
SUBSECTOR: HIGHWAYS / BRIDGES

Type of Investment: Brownfield

Short Name of the Project: 0078 Rio Verde-Ciudad Valles Highway

Contract Currency:
Mexican Pesos MXN

Estimated Investment MXN
\$ 5,200,000,000

Estimated Investment USD
\$ 304,093,567

Exchange rate (USD/MXN) used by the Ministry of Finance for the economic plan 2024 \$ 17.1

DESCRIPTION

ORIGINAL CONCESSION (Aug. 8, 2007). Operate, conserve, maintain, rehabilitate and extend the 36.6 km long Rioverde-Rayon toll free highway and the 8.0 km long La Pitahaya-Cd. Valles toll free highway. The concession includes build, operate, exploit, conserve and maintain the 68.58 km long Rayon-La Pitahaya toll free highway, of the Rioverde-Cd. Valles federal jurisdiction highway of 113.18 km long. The concessionary has the exclusive right to subscribe the provision of services agreement with the Federal Government. The concession includes the right-of-way, auxiliary services, accessories, works and constructions.

FIRST MODIFICATION (Aug. 26, 2014). The concession term was extended: For section "Rayón-La Pitahaya" 20 years, expiring on 08/08/2047. For sections "Rioverde-Rayón" and "La Pitahaya-Ciudad Valles" 4 additional years, expiring on august 08, 2031.

Contract Scope: Construction, Operation, Maintenance, Conservation

Type of Project: Public / Private

Selection Process: International Open Tender

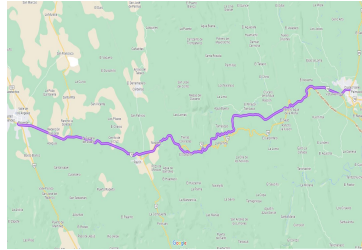
Term: 24 years

Type of Contract: Concession / Provision of Services

Payment Source: Budgetary

Asset (s): Highway 113.18 KM

GEOLOCATION



SPONSOR



Entity

Secretaría de Infraestructura, Comunicaciones y Transportes

Department

Dirección General de Desarrollo Carretero

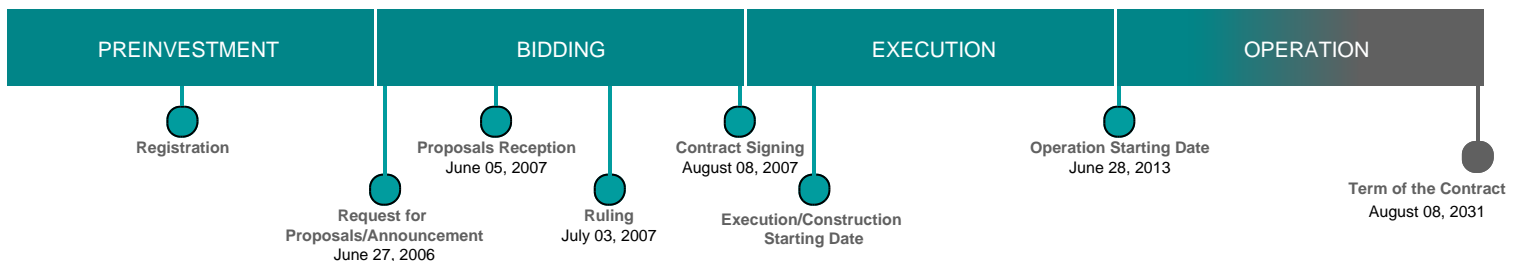
Contact

Fernando Palma Soto / Director General Adjunto de Seguimiento de Concesiones de Autopistas

E-mail

fpalmaso@sct.gob.mx

TIMELINE



Email: proyectosmexico@banobras.gob.mx



SHCP
SECRETARÍA DE HACIENDA
Y CRÉDITO PÚBLICO

BANOBRAS
BANCO NACIONAL DE OBRAS
Y SERVICIOS PÚBLICOS S.N.C.