



**PROJECT:** 0080 Nuevo Necaxa-Avila Camacho Highway and Avila Camacho-Tehuacan Section

**SECTOR:**  
Transport

**SUBSECTOR:**  
Highways / bridges

**STAGE ANALYZED:**  
Operation

**YEAR OF UPDATE:**  
2020

[Guide to read this datasheet](#) 

**Project's sustainability summary:** The Project is considered a key route for the connection and commercial flow between Mexico City and the states of Puebla, Hidalgo and Veracruz, since it links the central zone with one of the main international trade ports.



## ECONOMIC AND FINANCIAL SUSTAINABILITY

**EXAMPLE OF GOOD PRACTICES**  
The Project includes a matrix for the allocation of risks among the interested Parties.

Sustainability criteria	NA	T1	T2	T3
Economic and social returns				
Creation of employment opportunities and boost local productivity				
Financial sustainability of assets				
Detailed risk analysis				
Cash flow transparency and creditworthiness				
Infrastructure asset maintenance and optimal use				
Sustainability incentives				



## ENVIRONMENTAL SUSTAINABILITY AND CLIMATE RESILIENCE

**EXAMPLE OF GOOD PRACTICES**

Sustainability criteria	NA	T1	T2	T3
Greenhouse gas emissions				
Climate risks, resilience and disaster risk management				
Impacts on biodiversity and native flora and fauna in the region				
Environmental impact of the Project				
Control and monitoring of pollutants				
Efficient use of resources and recycling strategies				
Efficient use of energy and renewable sources				
Preservation or enhancement of public spaces				



## SOCIAL SUSTAINABILITY

**EXAMPLE OF GOOD PRACTICES**  
The Project is estimated to contribute to the reduction of costs and travel times between the North of the Gulf of Mexico with regions of the Altiplano.

Sustainability criteria	NA	T1	T2	T3
Reduction of poverty and access to basic services				
Integration of communities and other interested parties				
Integration of people with disabilities or special needs				
Effects of the project in the security of the region and in the health of workers and nearby communities				
Compliance with human and labor rights				
Cultural heritage and indigenous people				
Gender inclusion and women's economic empowerment through the project				
Equal distribution of benefits and compensations to communities				



## INSTITUTIONAL SUSTAINABILITY

**EXAMPLE OF GOOD PRACTICES**  
It is mentioned that the Project integrates a new corridor of the Free Trade Agreement: Mexico-Tuxpam-Tampico-Matamoros-Chicago-Toronto.

Sustainability criteria	NA	T1	T2	T3
Alignment with national and international strategies				
Sectoral and institutional integration				
Corporate sustainability, management and governance				
Transparency and anti-corruption protocols				
Legal requirements and compliance with social and environmental policies				
Development of more sustainable technologies and capacities				
Knowledge transfer in matters related to sustainability				
Pre-existing conditions and their monitoring				

**Source of this project:** Necaxa-Tehuacan Highway Website / Concession Title Necaxa-Tehuacan Highway / Report of the Superior Audit of the Federation 14-0-09100-02-0383 / SHCP Executive Presentation of the New Necaxa-Tehuacan Highway Project



### Comparison of this project vs other projects of the same subsector

(Number of projects included: 63)



Methodological framework defined by the Inter-American Development Bank (IDB)

[View](#)



**PROJECT:** 0080 Nuevo Necaxa-Avila Camacho Highway and Avila Camacho-Tihuatlan Section

**SECTOR:**  
Transport

**SUBSECTOR:**  
Highways / bridges

**STAGE ANALYZED:**  
Operation

**YEAR OF UPDATE:**  
2020

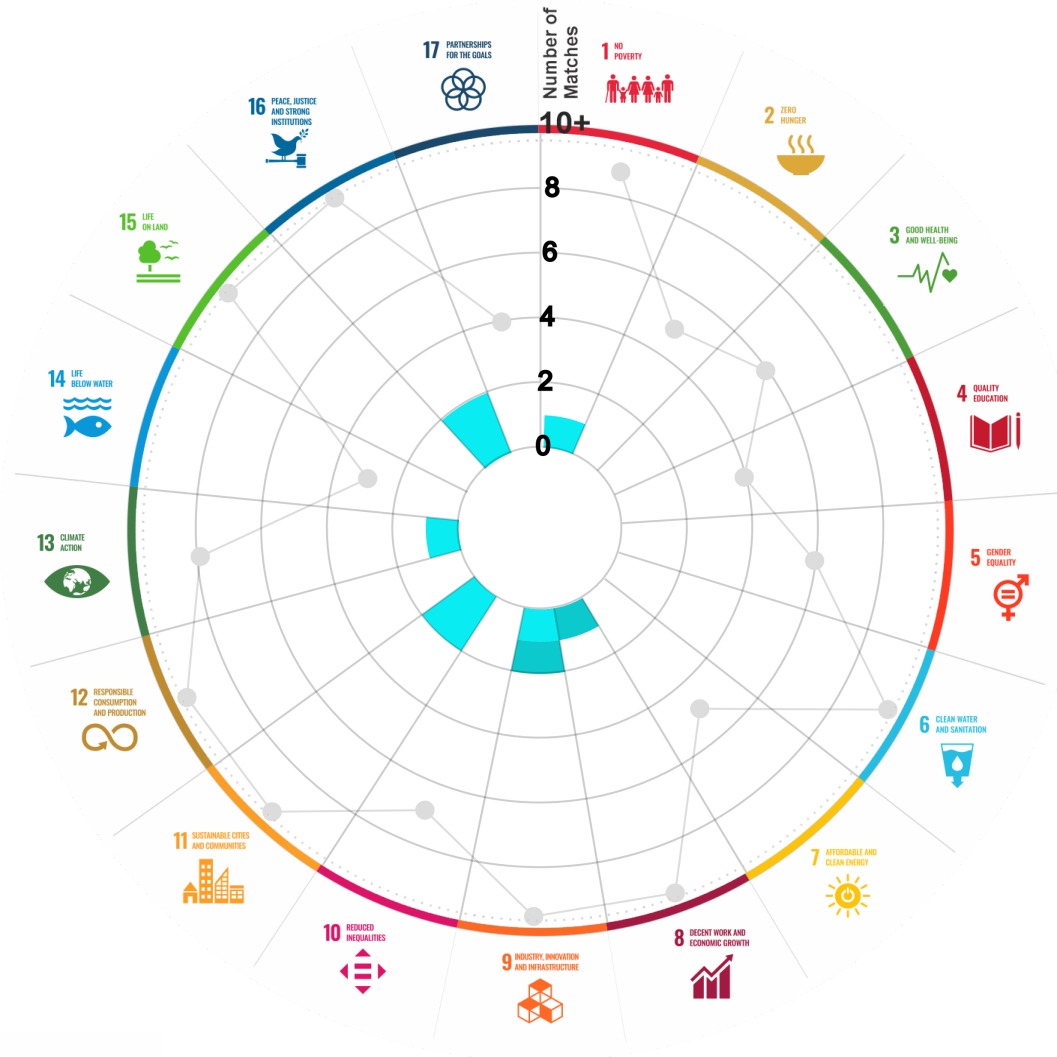
This section aims to present the potential alignment of the infrastructure project with the 17 Sustainable Development Goals (SDGs) of the 2030 Agenda. The relevance of this exercise resides in that it provides information to the actors of the infrastructure ecosystem for decision-making in investment that considers and promotes sustainable development.

Reading guide [View](#)

## 1. ALIGNMENT BY SUBSECTOR



## 2. ALIGNMENT BY SDG



### 3. ALIGNMENT BY CRITERIA AND TARGETS

[View](#)

Explanation of the alignment of the sustainability criteria and the SDGs.

[View](#)



The tonality of the bars represents the level of detail of the information available from the IDB criteria and its potential alignment for each SDG, based on the scale: N.A., TIER 1, TIER 2 or TIER 3.

Number of times the project information coincides with the alignment of the IDB criteria and the SDGs.

Approximate reference to the number of maximum alignments a project can have between the IDB criteria and the targets of the SDGs.

# P R O J E C T

**CONSTRUCTION, CONSERVATION, MAINTENANCE AND OPERATION OF THE NUEVO NECAXA-AVILA CAMACHO TOLL FREE HIGHWAY AND AVILA-CAMACHO TIHUATLAN TOLL HIGHWAY, IN THE STATES OF PUEBLA AND VERACRUZ.**

SECTOR: TRANSPORT  
SUBSECTOR: HIGHWAYS / BRIDGES

<b>Type of Investment:</b>	Brownfield	Banobras/Fonadin involvement
<b>Short Name of the Project:</b>	0080 Nuevo Necaxa-Avila Camacho Highway and Avila Camacho-Tihuatlan Section	
<b>Contract Currency:</b>	<b>Estimated Investment MXN</b>	<b>Estimated Investment USD</b>
Mexican Pesos MXN	\$ 7,848,260,000	\$ 380,983,495
		Exchange rate (USD/MXN) used by the Ministry of Finance for the economic plan 2023 \$ 20.6

## DESCRIPTION

ORIGINAL CONCESSION (July 19, 2007). Build, operate, conserve and maintain the 36.646 km long Nuevo Necaxa-Avila Camacho toll-free highway, from Nuevo Necaxa junction at the 139+603 km to the Avila Camacho junction 178+000 km. The concession includes to exploit, operate, conserve and maintain the 48.136 km long Avila Camacho-Tihuatlan toll highway, starting at Avila Camacho junction 178+000 km and ending at Tihuatlan junction 225+988 km. The concessionary has the exclusive right to subscribe the PPP agreement with the Federal Government for the Nuevo Necaxa-Avila Camacho toll free highway. FIRST MODIFICATION (Mar. 7, 2012). The condition referring to the contingencies related to the right of way of the Nuevo Necaxa-Avila Camacho highway section and additional works is modified.

(\*) Project with Banobras and/or National Infrastructure Fund (Fonadin) involvement or support.

**Contract Scope:** Construction, Operation, Maintenance, Conservation

<b>Type of Project:</b> Public / Private	<b>Selection Process:</b> International Open Tender	<b>Term:</b> 30 years
<b>Type of Contract:</b> Concession / Provision of Services	<b>Payment Source:</b> Mixed	

**Asset (s):** Highway 84.78 KM

## GEOLOCATION



## SPONSOR

### Entity

Secretaría de Infraestructura, Comunicaciones y Transportes

### Department

Dirección General de Desarrollo Carretero

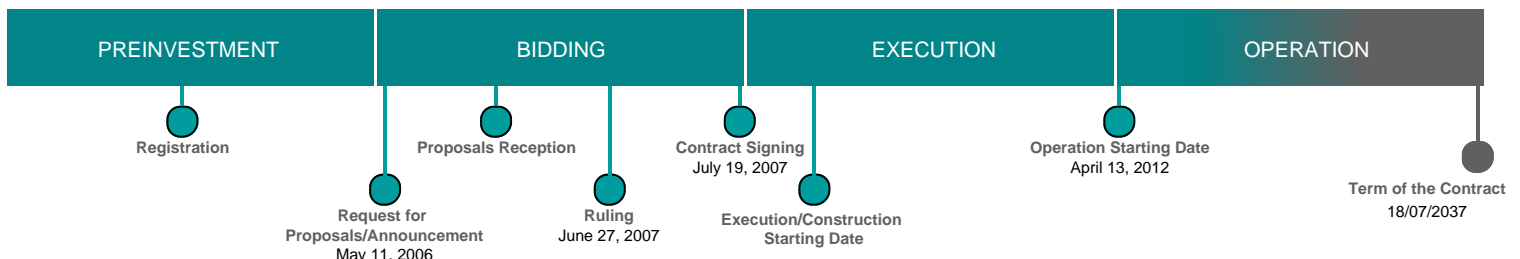
### Contact

Fernando Palma Soto / Director General Adjunto de Seguimiento de Concesiones de Autopistas

### E-mail

fpalmaso@sct.gob.mx

## TIMELINE



Email: [proyectosmexico@banobras.gob.mx](mailto:proyectosmexico@banobras.gob.mx)



**SHCP**  
SECRETARÍA DE HACIENDA  
Y CRÉDITO PÚBLICO

**BANOBRAS**  
BANCO NACIONAL DE OBRAS  
Y SERVICIOS PÚBLICOS S.N.C.