



PROJECT: 0141 Queretaro Bypass: Palmillas-Apaseo el Grande

SECTOR:
Transport

SUBSECTOR:
Highways / bridges

STAGE ANALYZED:
Operation

YEAR OF UPDATE:
2020

[Guide to read this datasheet](#) 

Project's sustainability summary: The Project connects Mexico City with the main cities of the Bajío such as Guadalajara, León, Irapuato and Celaya, which allows savings in time, fuel and vehicle wear.



ECONOMIC AND FINANCIAL SUSTAINABILITY

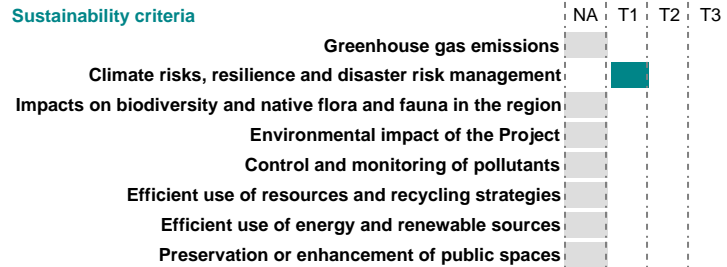
EXAMPLE OF GOOD PRACTICES
It is the obligation of the Developer to update the risk study every three years, in order to have the insurance in force, at all times.





ENVIRONMENTAL SUSTAINABILITY AND CLIMATE RESILIENCE

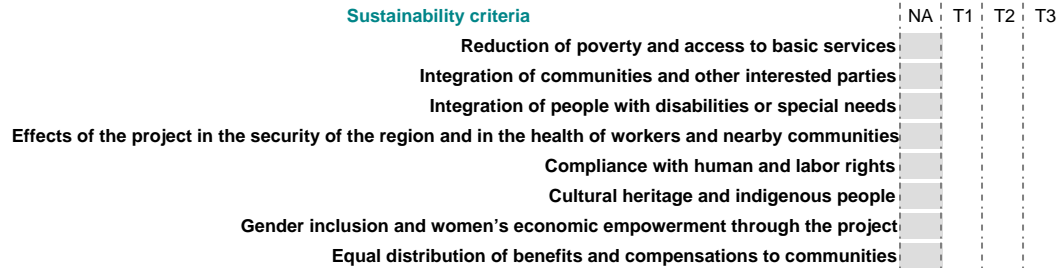
EXAMPLE OF GOOD PRACTICES





SOCIAL SUSTAINABILITY

EXAMPLE OF GOOD PRACTICES
The Project will benefit users with a saving of 60 minutes of travel time, on average.





INSTITUTIONAL SUSTAINABILITY

EXAMPLE OF GOOD PRACTICES
Prior to its inauguration, the Secretary of Communications and Transportation, together with the Governor of Querétaro, made a supervisory tour of the project.

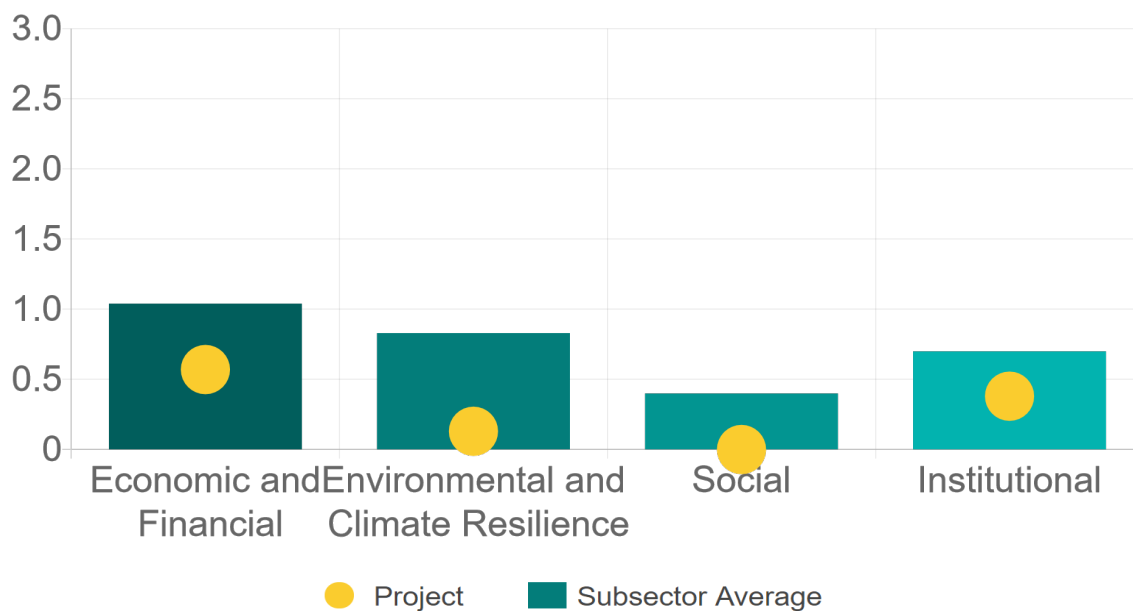


Source of this project: Concession Title: Macrolibramiento de Querétaro



Comparison of this project vs other projects of the same subsector

(Number of projects included: 62)



Methodological framework defined by the Inter-American Development Bank (IDB)

[View](#)



PROJECT: 0141 Queretaro Bypass: Palmillas-Apaseo el Grande

SECTOR:
Transport

SUBSECTOR:
Highways / bridges

STAGE ANALYZED:
Operation

YEAR OF UPDATE:
2020

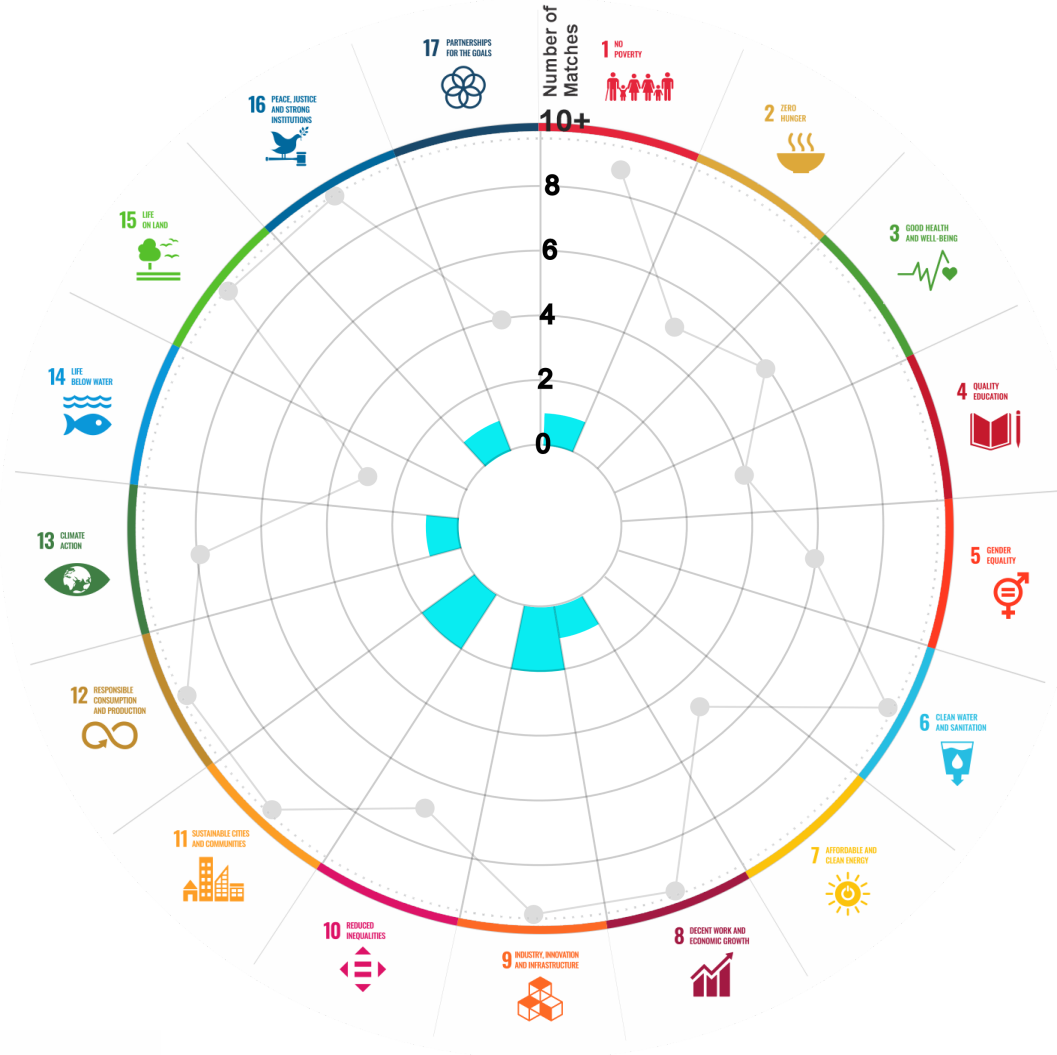
This section aims to present the potential alignment of the infrastructure project with the 17 Sustainable Development Goals (SDGs) of the 2030 Agenda. The relevance of this exercise resides in that it provides information to the actors of the infrastructure ecosystem for decision-making in investment that considers and promotes sustainable development.

Reading guide [View](#)

1. ALIGNMENT BY SUBSECTOR



2. ALIGNMENT BY SDG



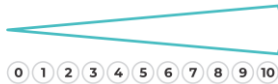
3. ALIGNMENT BY CRITERIA AND TARGETS

[View](#)



Explanation of the alignment of the sustainability criteria and the SDGs.

[View](#)



The tonality of the bars represents the level of detail of the information available from the IDB criteria and its potential alignment for each SDG, based on the scale: N.A., TIER 1, TIER 2 or TIER 3.

Number of times the project information coincides with the alignment of the IDB criteria and the SDGs.

Approximate reference to the number of maximum alignments a project can have between the IDB criteria and the targets of the SDGs.

P R O J E C T

CONSTRUCTION, OPERATION, MAINTENANCE, CONSERVATION, EXPLOITATION OF THE PALMILLAS-APASEO EL GRANDE TOLL HIGHWAY, IN THE STATES OF QUERETARO AND GUANAJUATO.

SECTOR: TRANSPORT
SUBSECTOR: HIGHWAYS / BRIDGES

Type of Investment: Brownfield

Short Name of the Project: 0141 Queretaro Bypass: Palmillas-Apaseo el Grande

Contract Currency:	Estimated Investment MXN	Estimated Investment USD	Exchange rate (USD/MXN) used by the Ministry of Finance for the economic plan 2023 \$ 20.6
Mexican Pesos MXN	\$ 9,539,000,000	\$ 463,058,252	

DESCRIPTION

ORIGINAL CONCESSION (Feb 28, 2013). Concession for the construction, operation, maintenance, conservation and exploitation of the 86 km long Palmillas-Apaseo el Grande toll highway, in the states of Queretaro and Guanajuato. The concession includes the right-of-way, works, constructions and other goods and accessories.

It consists of four circulation lanes - two in each direction - of hydraulic concrete, and includes nine junctions, 23 vehicle underpasses, nine vehicle overpasses and 15 bridges.

(*) Project with Banobras and/or National Infrastructure Fund (Fonadin) involvement or support.

Contract Scope: Construction, Operation, Maintenance, Conservation, Exploitation

Type of Project: Public / Private Selection Process: International Open Tender Term: 30 years

Type of Contract: Concession Payment Source: Project revenues / Rate

Asset (s): Highway 86 KM

GEOLOCATION



SPONSOR

Entity

Secretaría de Infraestructura, Comunicaciones y Transportes

Department

Dirección General de Desarrollo Carretero

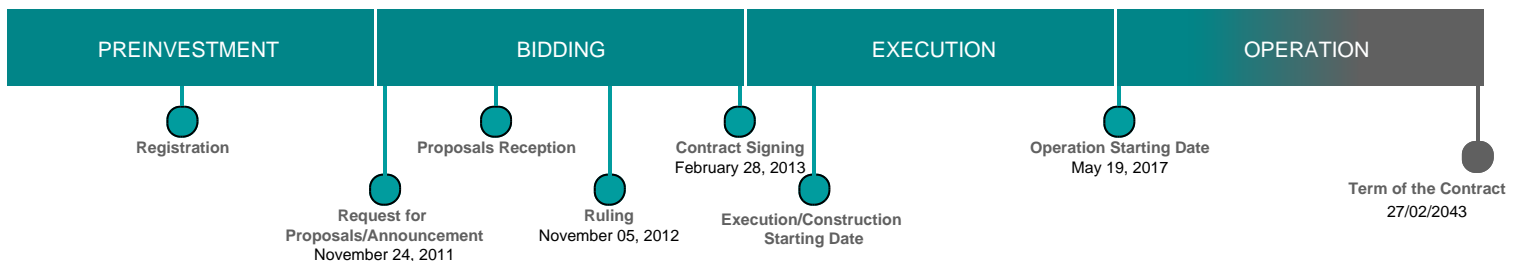
Contact

Fernando Palma Soto / Director General Adjunto de Seguimiento de Concesiones de Autopistas

E-mail

fpalmaso@sct.gob.mx

TIMELINE



Email: proyectosmexico@banobras.gob.mx



SHCP
SECRETARÍA DE HACIENDA
Y CRÉDITO PÚBLICO

BANOBRAS

BANCO NACIONAL DE OBRAS
Y SERVICIOS PÚBLICOS S.N.C.