



**PROJECT:** 0021 New Port of Veracruz: Specialized Bulk Agricultural Products Terminal

**SECTOR:**  
Transport

**SUBSECTOR:**  
Ports

**STAGE ANALYZED:**  
Execution

**YEAR OF UPDATE:**  
2020

[Guide to read this datasheet](#) [View](#) 

**Project's sustainability summary:** The Project is part of the response to the limitations that the Port of Veracruz faces and prevent the efficient handling of new vessels and of agricultural bulk, which incur extra costs for anchoring.

## ECONOMIC AND FINANCIAL SUSTAINABILITY



### ECONOMIC AND FINANCIAL SUSTAINABILITY

**EXAMPLE OF GOOD PRACTICES**

A detailed annual plan is mentioned for preventive and corrective maintenance of the equipment and a separate maintenance plan for the infrastructure.

**Sustainability criteria**

Sustainability criteria	NA	T1	T2	T3
Economic and social returns		█		
Creation of employment opportunities and boost local productivity		█		
Financial sustainability of assets	█			
Detailed risk analysis		█		
Cash flow transparency and creditworthiness	█			
Infrastructure asset maintenance and optimal use		█	█	
Sustainability incentives	█			

## ENVIRONMENTAL SUSTAINABILITY AND CLIMATE RESILIENCE



### ENVIRONMENTAL SUSTAINABILITY AND CLIMATE RESILIENCE

**EXAMPLE OF GOOD PRACTICES**

The design and implementation of an Emission Control Program is mentioned and the use of low-pollution spectrum lamps with high energy efficiency.

**Sustainability criteria**

Sustainability criteria	NA	T1	T2	T3
Greenhouse gas emissions		█	█	
Climate risks, resilience and disaster risk management		█		
Impacts on biodiversity and native flora and fauna in the region	█			
Environmental impact of the Project		█	█	
Control and monitoring of pollutants		█	█	
Efficient use of resources and recycling strategies	█			
Efficient use of energy and renewable sources		█		
Preservation and enhancement of public spaces	█			

## SOCIAL SUSTAINABILITY



### SOCIAL SUSTAINABILITY

**EXAMPLE OF GOOD PRACTICES**

The NMX-R-025-SCFI-2015 Official Norm for Labour Equality and Non-Discrimination is met.

**Sustainability criteria**

Sustainability criteria	NA	T1	T2	T3
Reduction of poverty and access to basic services	█			
Integration of communities and other interested parties		█	█	█
Integration of people with disabilities or special needs	█			
Effects of the project in the security of the region and in the health of workers and nearby communities	█			
Compliance with human and labor rights	█			
Cultural heritage and indigenous people	█			
Gender inclusion and women's economic empowerment through the project		█		
Equal distribution of benefits and compensations to communities	█			

## INSTITUTIONAL SUSTAINABILITY



### INSTITUTIONAL SUSTAINABILITY

**EXAMPLE OF GOOD PRACTICES**

A data collection and monitoring system is included with which the operations of the port will be organized and communicated to the Integral Port Administration of Veracruz.

**Sustainability criteria**

Sustainability criteria	NA	T1	T2	T3
Alignment with national and international strategies		█	█	
Sectoral and institutional integration		█	█	
Corporate sustainability, management and governance		█	█	
Transparency and anti-corruption protocols	█			
Legal requirements and compliance with social and environmental policies		█	█	█
Development of more sustainable technologies and capacities	█			
Knowledge transfer in matters related to sustainability	█			
Pre-existing conditions and their monitoring		█	█	

**Source of this project:** Veracruz Comprehensive Port Administration: Citizen Participation Mechanism / Veracruz Comprehensive Port Administration: White Papers / Veracruz Comprehensive Port Administration: Cost-Benefit Analysis / Environmental Impact Assessment / New Port of Veracruz Terminal Specialized in Agricultural Bulk / Veracruz Comprehensive Port Administration: Labour Equity Certification



### Comparison of this project vs other projects of the same subsector

(Number of projects included: 4)



Methodological framework defined by the Inter-American Development Bank (IDB)

[View](#)



**PROJECT:** 0021 New Port of Veracruz: Specialized Bulk Agricultural Products Terminal

**SECTOR:**  
Transport

**SUBSECTOR:**  
Ports

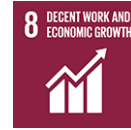
**STAGE ANALYZED:**  
Execution

**YEAR OF UPDATE:**  
2020

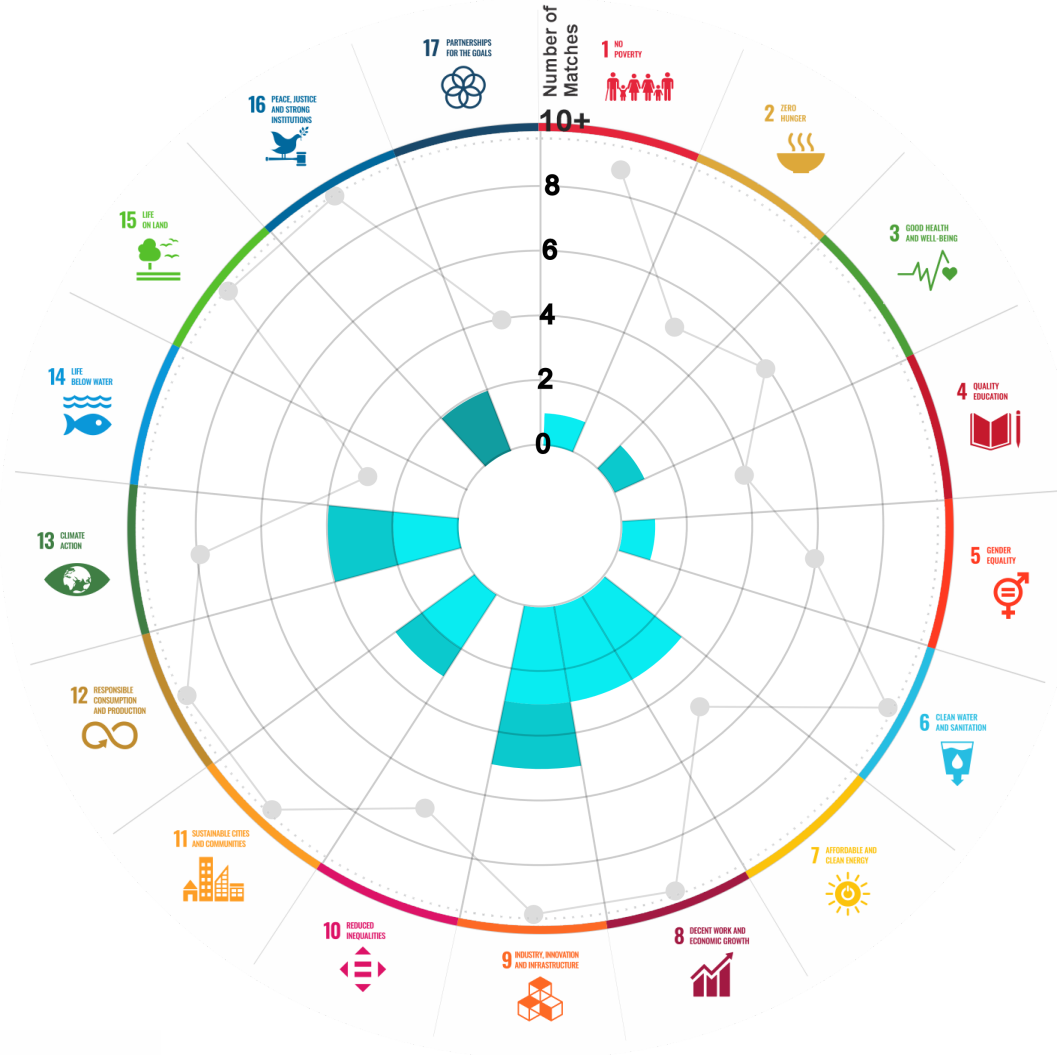
This section aims to present the potential alignment of the infrastructure project with the 17 Sustainable Development Goals (SDGs) of the 2030 Agenda. The relevance of this exercise resides in that it provides information to the actors of the infrastructure ecosystem for decision-making in investment that considers and promotes sustainable development.

Reading guide [View](#)

## 1. ALIGNMENT BY SUBSECTOR



## 2. ALIGNMENT BY SDG



## 3. ALIGNMENT BY CRITERIA AND TARGETS

[View](#)



Explanation of the alignment of the sustainability criteria and the SDGs.

[View](#)



The tonality of the bars represents the level of detail of the information available from the IDB criteria and its potential alignment for each SDG, based on the scale: N.A., TIER 1, TIER 2 or TIER 3.

Number of times the project information coincides with the alignment of the IDB criteria and the SDGs.

Approximate reference to the number of maximum alignments a project can have between the IDB criteria and the targets of the SDGs.

## P R O J E C T

DESIGN, CONSTRUCTION, INSTALLATION, OPERATION, MAINTENANCE AND EXPLOITATION OF A SPECIALIZED PUBLIC TERMINAL FOR BULK AGRICULTURAL PRODUCTS HANDLING IN THE NEW PORT OF VERACRUZ.

SECTOR: TRANSPORT  
SUBSECTOR: PORTS

<b>Type of Investment:</b>	Brownfield		
<b>Macroproject:</b>	New Port of Veracruz		
<b>Short Name of the Project:</b>	0021 New Port of Veracruz: Specialized Bulk Agricultural Products Terminal		
<b>Contract Currency:</b>	<b>Estimated Investment MXN</b>	<b>Estimated Investment USD</b>	Exchange rate (USD/MXN) used by the Ministry of Finance for the economic plan 2023 \$ 20.6
Mexican Pesos MXN	\$ 849,000,000	\$ 41,213,592	

### DESCRIPTION

The project consists of the construction and exploitation of a public port terminal in an area of approximately 100,002 m2 and a waterfront of 300 m for specialized maneuvers and handling of agricultural bulks, as well as liquid or semi-liquid products derived from agricultural bulk.

Also, is considered along the water front of the aforementioned area, in the manner and terms established in the bases, a dock for public use to handle the cargo of the terminal, which will operate in specialized maneuvering.

The terminal has a warehouse with a capacity of 15,000 tons, 5 grain silos with a capacity of 10,500 tons each, 6 tanks with a capacity of 2,460 tons each, 2 tanks with a capacity of 1,640 tons each, 3 tanks with a capacity of 820 tons each and 6 tanks of 492 tons each.

**Contract Scope:** Design, Construction, Installation, Operation, Maintenance, Exploitation

<b>Type of Project:</b>	Public / Private	<b>Selection Process:</b>	International Open Tender	<b>Term:</b>	20 years
<b>Type of Contract:</b>	Partial Assignment of Rights	<b>Payment Source:</b>	Project revenues / Rate		

**Asset (s):** Port Terminal 100,002 m2

### GEOLOCATION



### SPONSOR

#### Entity

Secretaría de Marina

#### Department

Coordinación General de Puertos y Marina Mercante  
Administración del Sistema Portuario Nacional Veracruz,  
S.A. de C.V.

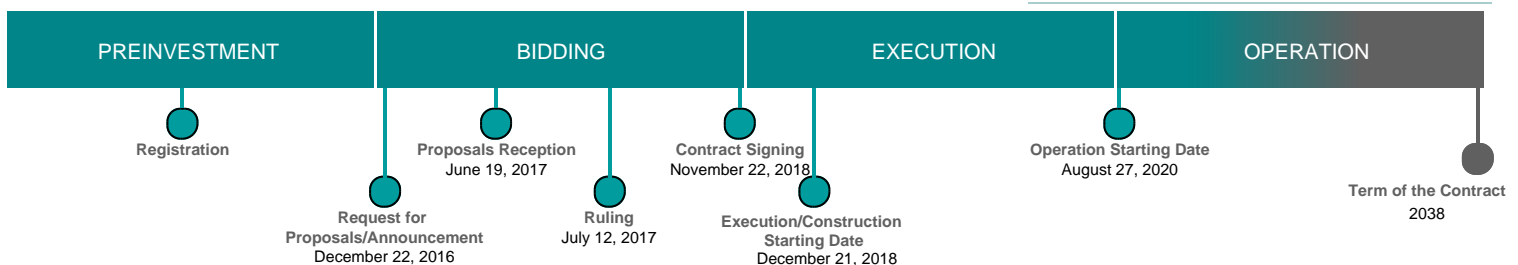
#### Contact

Almirante (Retirado) Romel Eduardo  
Ledezma Abaroa

#### E-mail

dirgral@puertodeveracruz.com.mx

### TIMELINE



Email: [proyectosmexico@banobras.gob.mx](mailto:proyectosmexico@banobras.gob.mx)



**SHCP**  
SECRETARÍA DE HACIENDA  
Y CRÉDITO PÚBLICO

**BANOBRAS**  
BANCO NACIONAL DE OBRAS  
Y SERVICIOS PÚBLICOS S.N.C.