



PROJECT: 0028 Monterrey-Nuevo Laredo Highway La Gloria San Fernando Section

SECTOR:
Transport

SUBSECTOR:
Highways / bridges

STAGE ANALYZED:
Execution

YEAR OF UPDATE:
2020

[Guide to read this datasheet](#) 

Project's sustainability summary: The Project includes the design, construction, operation, maintenance, conservation and exploitation of the highway section La Gloria-San Fernando. The Project will widen the current infrastructure in order to provide greater safety to drivers, as well as reduce travel times, fuel costs and the corresponding reduction in environmental impact due to vehicle use.

ECONOMIC AND FINANCIAL SUSTAINABILITY

EXAMPLE OF GOOD PRACTICES
The risk assesment will be updated every 3 years to keep insurance in force.

Sustainability criteria	NA	T1	T2	T3
Economic and social returns		█		
Creation of employment opportunities and boost local productivity			█	
Financial sustainability of assets			█	
Detailed risk analysis			█	█
Cash flow transparency and creditworthiness				█
Infrastructure asset maintenance and optimal use			█	
Sustainability incentives				█

ENVIRONMENTAL SUSTAINABILITY AND CLIMATE RESILIENCE

EXAMPLE OF GOOD PRACTICES
The Developer must implement Environmental Management System that meets international standards and keep it updated according to current regulations.

Sustainability criteria	NA	T1	T2	T3
Greenhouse gas emissions			█	
Climate risks, resilience and disaster risk management			█	█
Impacts on biodiversity and native flora and fauna in the region			█	
Environmental impact of the Project			█	█
Control and monitoring of pollutants				█
Efficient use of resources and recycling strategies				█
Efficient use of energy and renewable sources				█
Preservation and enhancement of public spaces				█

SOCIAL SUSTAINABILITY

EXAMPLE OF GOOD PRACTICES
The Project considers and integrates the road and pedestrian communication of residents in surrounding communities, by building 17 crosswalks along the Road.

Sustainability criteria	NA	T1	T2	T3
Reduction of poverty and access to basic services			█	█
Integration of communities and other interested parties			█	
Integration of people with disabilities or special needs			█	
Effects of the project in the security of the region and in the health of workers and nearby communities			█	
Compliance with human and labor rights			█	
Cultural heritage and indigenous people				█
Gender inclusion and women's economic empowerment through the project				█
Equal distribution of benefits and compensations to communities			█	█

INSTITUTIONAL SUSTAINABILITY

EXAMPLE OF GOOD PRACTICES
The Developer will keep a computerized design database to review the plans included in the Construction Program and Executive Projects on site or remotely.

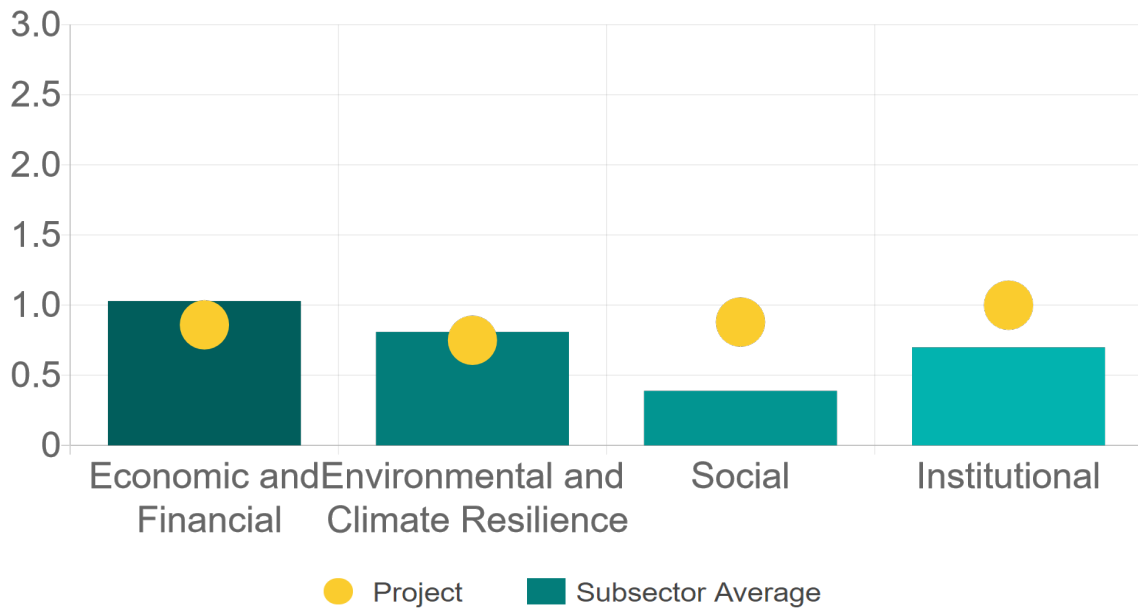
Sustainability criteria	NA	T1	T2	T3
Alignment with national and international strategies			█	
Sectoral and institutional integration			█	
Corporate sustainability, management and governance			█	█
Transparency and anti-corruption protocols			█	█
Legal requirements and compliance with social and environmental policies			█	
Development of more sustainable technologies and capacities				█
Knowledge transfer in matters related to sustainability				█
Pre-existing conditions and their monitoring				█

Source of this project: Contract APP-009000062-E52-2017 MONTERREY-NUEVO LAREDO SECTION LA GLORIA SAN FERNANDO / APPENDIX 1 TECHNICAL ASPECT MONTERREY-NUEVO LAREDO SECTION LA GLORIA SAN FERNANDO / CONCESSION TITLE APP-009000062-E52-2017 MONTERREY-NUEVO LAREDO SECTION LA GLORIA SAN FERNANDO



Comparison of this project vs other projects of the same subsector

(Number of projects included: 63)



Methodological framework defined by the Inter-American Development Bank (IDB)

[View](#)



PROJECT: 0028 Monterrey-Nuevo Laredo Highway La Gloria San Fernando Section

SECTOR:
Transport

SUBSECTOR:
Highways / bridges

STAGE ANALYZED:
Execution

YEAR OF UPDATE:
2020

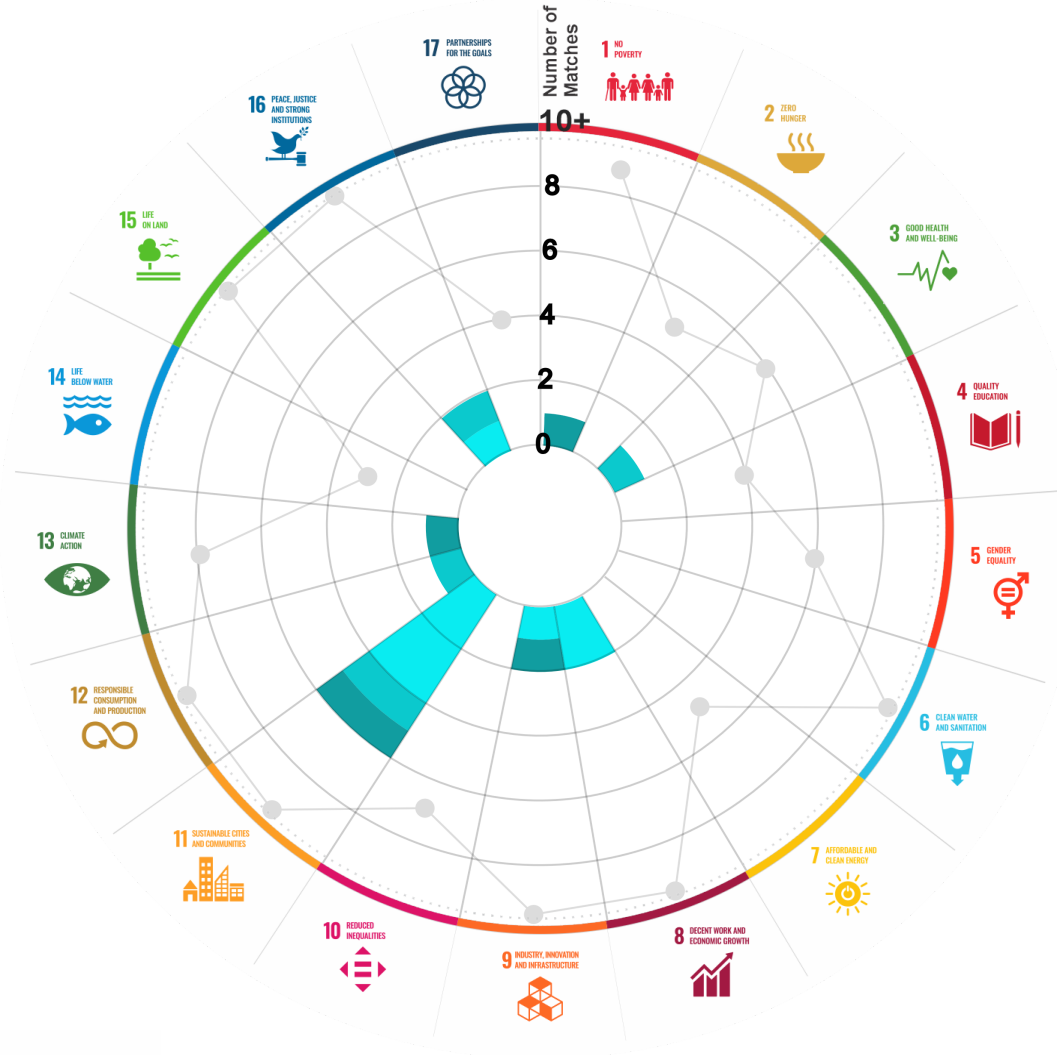
This section aims to present the potential alignment of the infrastructure project with the 17 Sustainable Development Goals (SDGs) of the 2030 Agenda. The relevance of this exercise resides in that it provides information to the actors of the infrastructure ecosystem for decision-making in investment that considers and promotes sustainable development.

Reading guide [View](#)

1. ALIGNMENT BY SUBSECTOR



2. ALIGNMENT BY SDG



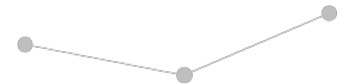
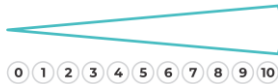
3. ALIGNMENT BY CRITERIA AND TARGETS

[View](#)



Explanation of the alignment of the sustainability criteria and the SDGs.

[View](#)



The tonality of the bars represents the level of detail of the information available from the IDB criteria and its potential alignment for each SDG, based on the scale: N.A., TIER 1, TIER 2 or TIER 3.

Number of times the project information coincides with the alignment of the IDB criteria and the SDGs.

Approximate reference to the number of maximum alignments a project can have between the IDB criteria and the targets of the SDGs.

PROJECT

DESIGN, CONSTRUCTION, OPERATION, MAINTENANCE, CONSERVATION AND EXPLOITATION OF THE MONTERREY- NUEVO LAREDO HIGHWAY, LA GLORIA SAN FERNANDO SECTION, IN THE STATES OF NUEVO LEON AND TAMAULIPAS.

SECTOR: TRANSPORT
SUBSECTOR: HIGHWAYS / BRIDGES

Type of Investment: Brownfield

Short Name of the Project: 0028 Monterrey-Nuevo Laredo Highway La Gloria San Fernando Section

Contract Currency:	Estimated Investment MXN	Estimated Investment USD	Exchange rate (USD/MXN) used by the Ministry of Finance for the economic plan 2023 \$ 20.6
Mexican Pesos MXN	\$ 4,437,573,588	\$ 215,416,193	

DESCRIPTION

This project considers the following:

- I) Construct, operate, exploit, conserve and maintain the high specifications highway, A4S type Monterrey - Nuevo Laredo, La Gloria San Fernando Section, starting at La Gloria junction located at km 145 of the Toll Federal Highway Mex -85D and ending at km 194 of the toll free Federal Highway Mex-85;
- II) Construct a new body on the existing Nuevo Laredo - Monterrey Federal Highway, La Gloria-San Fernando Section;
- III) Conserve and maintain the toll free Federal Highway of high specifications, A2 type Monterrey - Nuevo Laredo, La Gloria - San Fernando Section", between the States of Nuevo Leon and Tamaulipas.

Contract Scope: Design, Construction, Operation, Maintenance, Conservation, Exploitation

Type of Project: Public / Private Selection Process: International Open Tender Term: 30 years

Type of Contract: Federal PPP Payment Source: Project revenues / Rate

Asset (s): Highway 49 KM-A4s

GEOLOCATION



SPONSOR

Entity

Secretaría de Infraestructura, Comunicaciones y Transportes

Department

Coordinación Técnica de Planeación de Infraestructura Carretera

Contact: Alejandro Rescala Pérez

E-mail: arescala@sct.gob.mx

TIMELINE



Email: proyectosmexico@banobras.gob.mx



SHCP
SECRETARÍA DE HACIENDA
Y CRÉDITO PÚBLICO

BANOBRAS
BANCO NACIONAL DE OBRAS
Y SERVICIOS PÚBLICOS S.N.C.