



PROJECT: 0693 Las Varas- Puerto Vallarta Highway Section

SECTOR:
Transport

SUBSECTOR:
Highways / bridges

STAGE ANALYZED:
Execution

YEAR OF UPDATE:
2020

[Guide to read this datasheet](#) 

Project's sustainability summary: The Project includes the design, construction, operation, maintenance, conservation and exploitation of the highway section from Las Varas to Puerto Vallarta. In addition to connecting to the airport, the Project will reduce travel times, fuel costs and the corresponding reduction in environmental impact due to vehicle use.

ECONOMIC AND FINANCIAL SUSTAINABILITY

EXAMPLE OF GOOD PRACTICES
The risk assessments will be updated every 3 years to keep insurance in force.

Sustainability criteria	NA	T1	T2	T3
Economic and social returns		█		
Creation of employment opportunities and boost local productivity				
Financial sustainability of assets		█		
Detailed risk analysis		█	█	█
Cash flow transparency and creditworthiness		█		
Infrastructure asset maintenance and optimal use				
Sustainability incentives				

ENVIRONMENTAL SUSTAINABILITY AND CLIMATE RESILIENCE

EXAMPLE OF GOOD PRACTICES
There will be a Forestry Manual to reduce repair works and road conservation costs, through its protection against erosion and landslides.

Sustainability criteria	NA	T1	T2	T3
Greenhouse gas emissions				
Climate risks, resilience and disaster risk management		█	█	█
Impacts on biodiversity and native flora and fauna in the region		█		
Environmental impact of the Project		█		
Control and monitoring of pollutants				
Efficient use of resources and recycling strategies				
Efficient use of energy and renewable sources				
Preservation and enhancement of public spaces		█		

SOCIAL SUSTAINABILITY

EXAMPLE OF GOOD PRACTICES
The work environment will comply with international safety standards and workers will be allowed to request a medical examination to assess their fitness during the Work.

Sustainability criteria	NA	T1	T2	T3
Reduction of poverty and access to basic services		█	█	█
Integration of communities and other interested parties				
Integration of people with disabilities or special needs				
Effects of the project in the security of the region and in the health of workers and nearby communities		█		
Compliance with human and labor rights		█		
Cultural heritage and indigenous people				
Gender inclusion and women's economic empowerment through the project				
Equal distribution of benefits and compensations to communities		█	█	█

INSTITUTIONAL SUSTAINABILITY

EXAMPLE OF GOOD PRACTICES
The Developer will keep a computerized design database to review the plans included in the Construction Program and Executive Projects, on site or remotely.

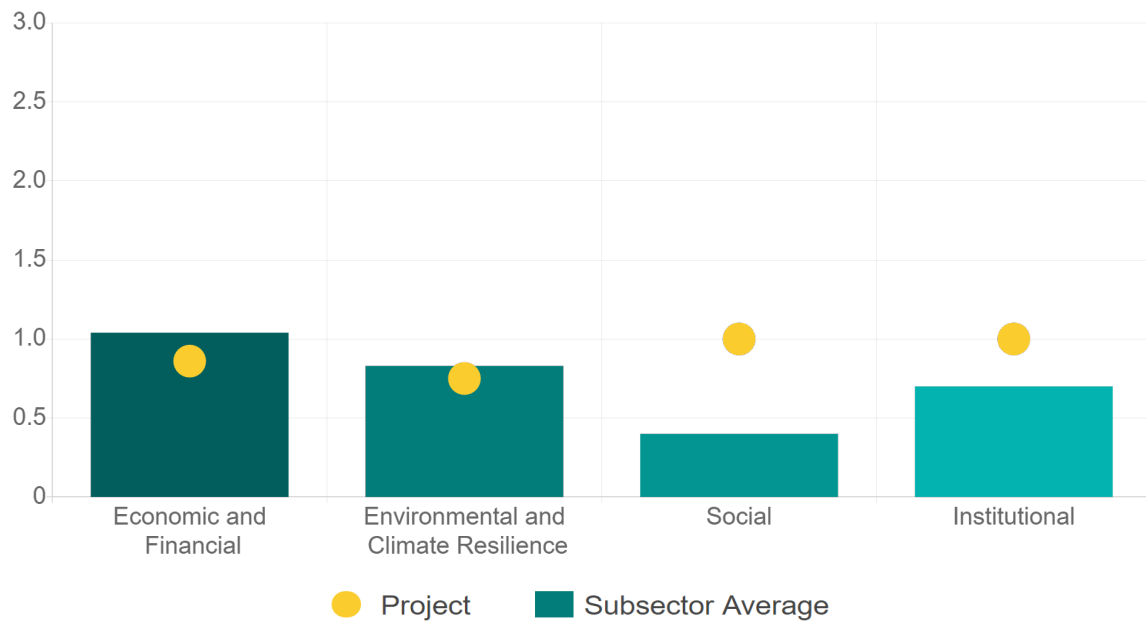
Sustainability criteria	NA	T1	T2	T3
Alignment with national and international strategies		█		
Sectoral and institutional integration		█		
Corporate sustainability, management and governance		█	█	█
Transparency and anti-corruption protocols		█	█	█
Legal requirements and compliance with social and environmental policies		█		
Development of more sustainable technologies and capacities				
Knowledge transfer in matters related to sustainability				
Pre-existing conditions and their monitoring		█		

Source of this project: Contract No. APP-009000062-C89-2015 Section Las Varas- Puerto Vallarta / Concession Title Road Section Las Varas- Puerto Vallarta



Comparison of this project vs other projects of the same subsector

(Number of projects included: 62)



Methodological framework defined by the Inter-American Development Bank (IDB)

View



PROJECT: 0693 Las Varas- Puerto Vallarta Highway Section

SECTOR:
Transport

SUBSECTOR:
Highways / bridges

STAGE ANALYZED:
Execution

YEAR OF UPDATE:
2020

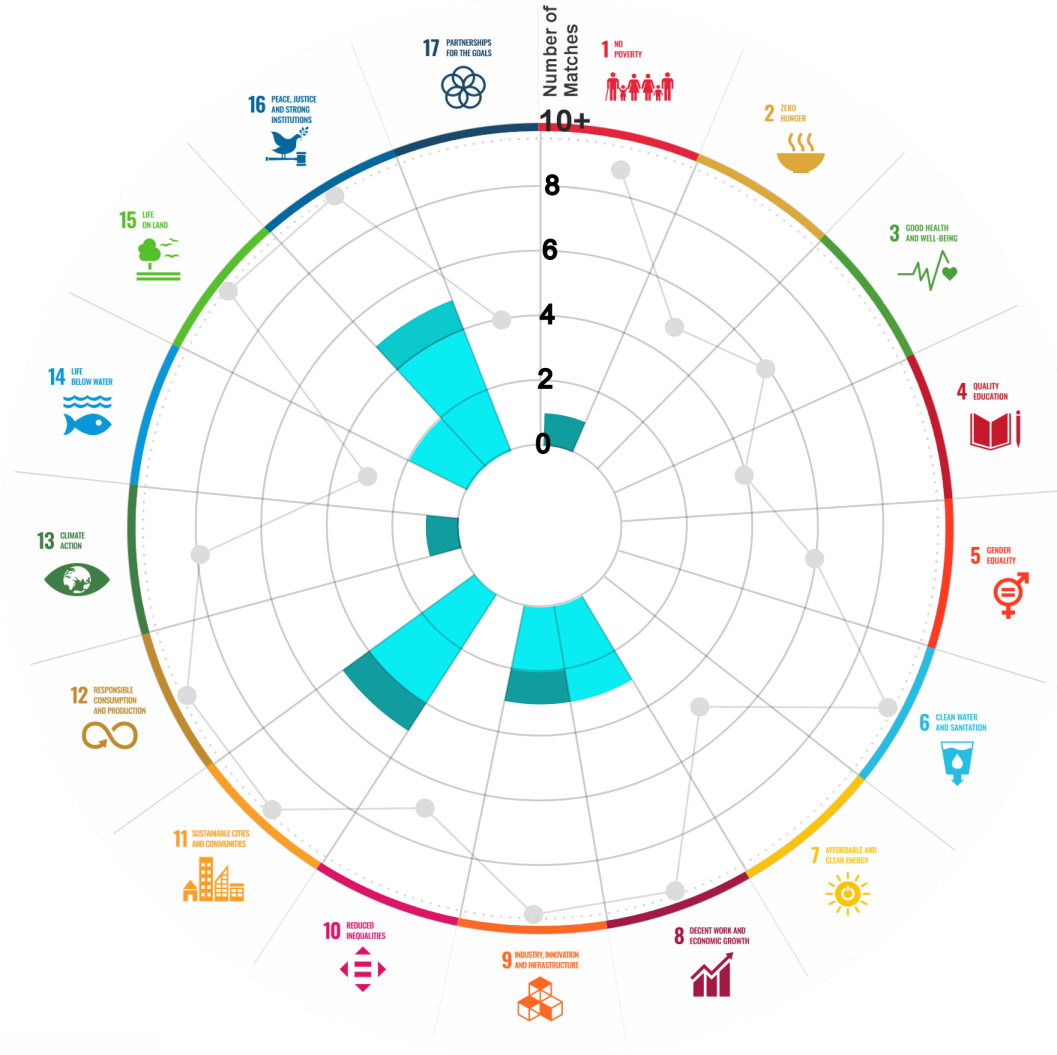
This section aims to present the potential alignment of the infrastructure project with the 17 Sustainable Development Goals (SDGs) of the 2030 Agenda. The relevance of this exercise resides in that it provides information to the actors of the infrastructure ecosystem for decision-making in investment that considers and promotes sustainable development.

Reading guide [View](#)

1. ALIGNMENT BY SUBSECTOR



2. ALIGNMENT BY SDG

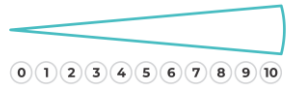


3. ALIGNMENT BY CRITERIA AND TARGETS

[View](#)

Explanation of the alignment of the sustainability criteria and the SDGs.

[View](#)



The tonality of the bars represents the level of detail of the information available from the IDB criteria and its potential alignment for each SDG, based on the scale: N.A., TIER 1, TIER 2 or TIER 3.

Number of times the project information coincides with the alignment of the IDB criteria and the SDGs.

Approximate reference to the number of maximum alignments a project can have between the IDB criteria and the targets of the SDGs.



PROJECT

DESIGN, CONSTRUCTION, OPERATION, MAINTENANCE, CONSERVATION AND EXPLOITATION OF THE HIGHWAY SECTION "LAS VARAS-PUERTO VALLARTA" IN THE STATES OF JALISCO AND NAYARIT.

SECTOR: TRANSPORT
SUBSECTOR: HIGHWAYS / BRIDGES

Type of Investment:	Greenfield	Banobras/Fonadin involvement		
Short Name of the Project:	0693 Las Varas- Puerto Vallarta Highway Section			
Contract Currency:	Estimated Investment MXN	Estimated Investment USD	Exchange rate (USD/MXN) used by the Ministry of Finance for the economic plan 2023 \$ 20.6	
Mexican Pesos MXN	\$ 7,215,925,973	\$ 350,287,668		

DESCRIPTION

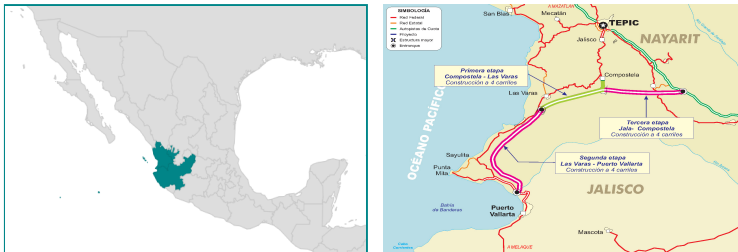
High specification highway type A2, "Tepic-Puerto Vallarta, on the stretch Las Varas-Puerto Vallarta" starting at km 680 + 103,513 and ending in the airport connection at km 763 + 031.024 with a total length in the trunk road of 83.614271 km and with 6,678 additional km of road branches (5,449 km of the Airport Branch and 1,229 km of the Branch Km 692). In addition to seven junctions corresponding to six overpasses with their respective structures and a ground level one. The total length is 90.29 km.

Contract Scope: Design, Construction, Operation, Maintenance, Conservation, Exploitation

Type of Project:	Public / Private	Selection Process:	Public Bid	Term:	30 years
Type of Contract:	Federal PPP	Payment Source:	Project revenues / Rate		

Asset (s): Highway 90 KM-A2

GEOLOCATION



SPONSOR

Entity

Secretaría de Infraestructura, Comunicaciones y Transportes

Department

Dirección General de Desarrollo Carretero

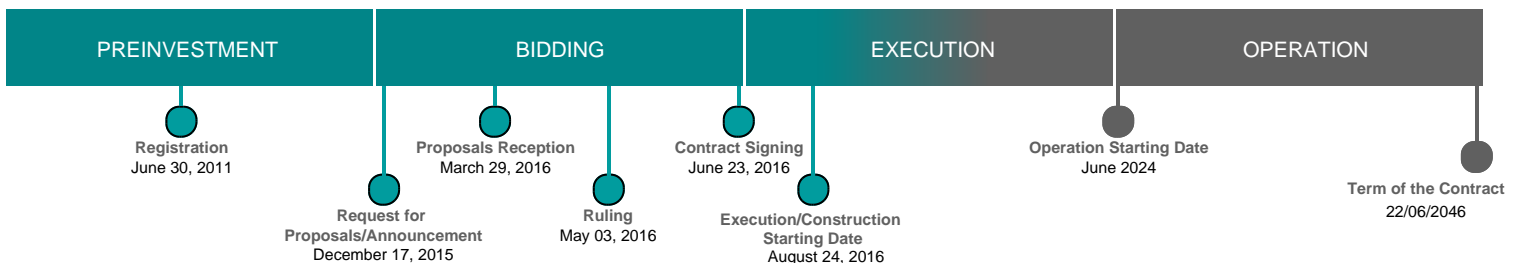
Contact

Fernando Palma Soto / Director General Adjunto de Seguimiento de Concesiones de Autopistas

E-mail

fpalmaso@sct.gob.mx

TIMELINE



Email: proyectosmexico@banobras.gob.mx



SHCP
SECRETARÍA DE HACIENDA
Y CRÉDITO PÚBLICO

BANOBRAS
BANCO NACIONAL DE OBRAS
Y SERVICIOS PÚBLICOS S.N.C.