



PROJECT: 0766 CFE: Tuxpan – Tula Gas Pipeline

SECTOR:
Hydrocarbons

SUBSECTOR:
Midstream

STAGE ANALYZED:
Execution

YEAR OF UPDATE:
2020

[Guide to read this datasheet](#) 


Project's sustainability summary: The pipeline will contribute to the generation of clean and low cost energy. Subcontracting of local suppliers will be privileged and training will be carried out for employees to acquire new skills. An Environmental Management Plan will be followed to preserve air quality and acoustics, and a Social Investment Plan may contribute to local development.



ECONOMIC AND FINANCIAL SUSTAINABILITY

EXAMPLE OF GOOD PRACTICES
Fair and transparent procurement will be fostered, favoring the subcontracting of local suppliers. Training will be implemented for employees.

Sustainability criteria	NA	T1	T2	T3
Economic and social returns				
Creation of employment opportunities and boost local productivity				
Financial sustainability of assets				
Detailed risk analysis				
Cash flow transparency and creditworthiness				
Infrastructure asset maintenance and optimal use				
Sustainability incentives				



ENVIRONMENTAL SUSTAINABILITY AND CLIMATE RESILIENCE

EXAMPLE OF GOOD PRACTICES
The Environmental Plan will be followed to preserve air quality and acoustics with the objective of preventing and minimizing the dispersion of particles and emissions of combustion gases.

Sustainability criteria	NA	T1	T2	T3
Greenhouse gas emissions				
Climate risks, resilience and disaster risk management				
Impacts on biodiversity and native flora and fauna in the region				
Environmental impact of the Project				
Control and monitoring of pollutants				
Efficient use of resources and recycling strategies				
Efficient use of energy and renewable sources				
Preservation and enhancement of public spaces				



SOCIAL SUSTAINABILITY

EXAMPLE OF GOOD PRACTICES
A Social Investment Plan that could contribute to local development in different sectors such as health, education, environment, community, community, society and security is proposed.

Sustainability criteria	NA	T1	T2	T3
Reduction of poverty and access to basic services				
Integration of communities and other interested parties				
Integration of people with disabilities or special needs				
Effects of the project in the security of the region and in the health of workers and nearby communities				
Compliance with human and labor rights				
Cultural heritage and indigenous people				
Gender inclusion and women's economic empowerment through the project				
Equal distribution of benefits and compensations to communities				



INSTITUTIONAL SUSTAINABILITY

EXAMPLE OF GOOD PRACTICES
In the personnel selection process, reference is made to the implementation of transparency and equity principles according to internal policies and guidelines.

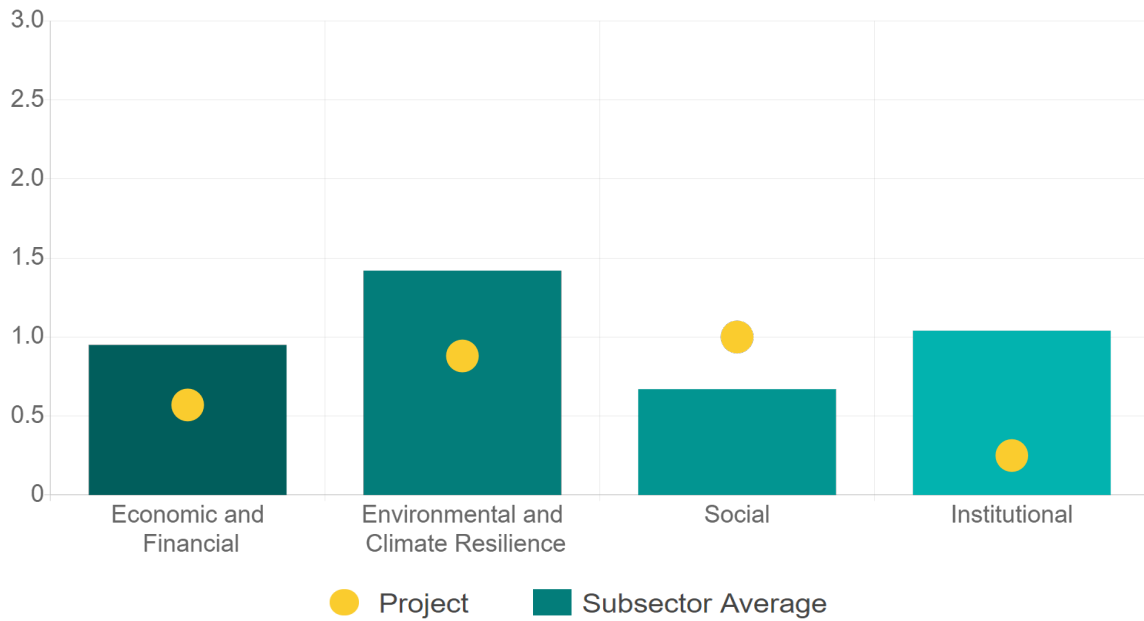
Sustainability criteria	NA	T1	T2	T3
Alignment with national and international strategies				
Sectoral and institutional integration				
Corporate sustainability, management and governance				
Transparency and anti-corruption protocols				
Legal requirements and compliance with social and environmental policies				
Development of more sustainable technologies and capacities				
Knowledge transfer in matters related to sustainability				
Pre-existing conditions and their monitoring				

Source of this project: Social Impact Assessment Tuxpan-Tula Natural Gas Transport System. Technical opinion DGAEISyCS-102.2016 / Social Impact Assessment Resolution Tuxpan-Tula Natural Gas Transport System. Memorandum 100.-DGISOS.411 / 16 / Memorandum ASEA / UGI / DGGRA / 1115/2016



Comparison of this project vs other projects of the same subsector

(Number of projects included: 9)



Methodological framework defined by the Inter-American Development Bank (IDB)

View



PROJECT: 0766 CFE: Tuxpan – Tula Gas Pipeline

SECTOR:
Hydrocarbons

SUBSECTOR:
Midstream

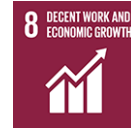
STAGE ANALYZED:
Execution

YEAR OF UPDATE:
2020

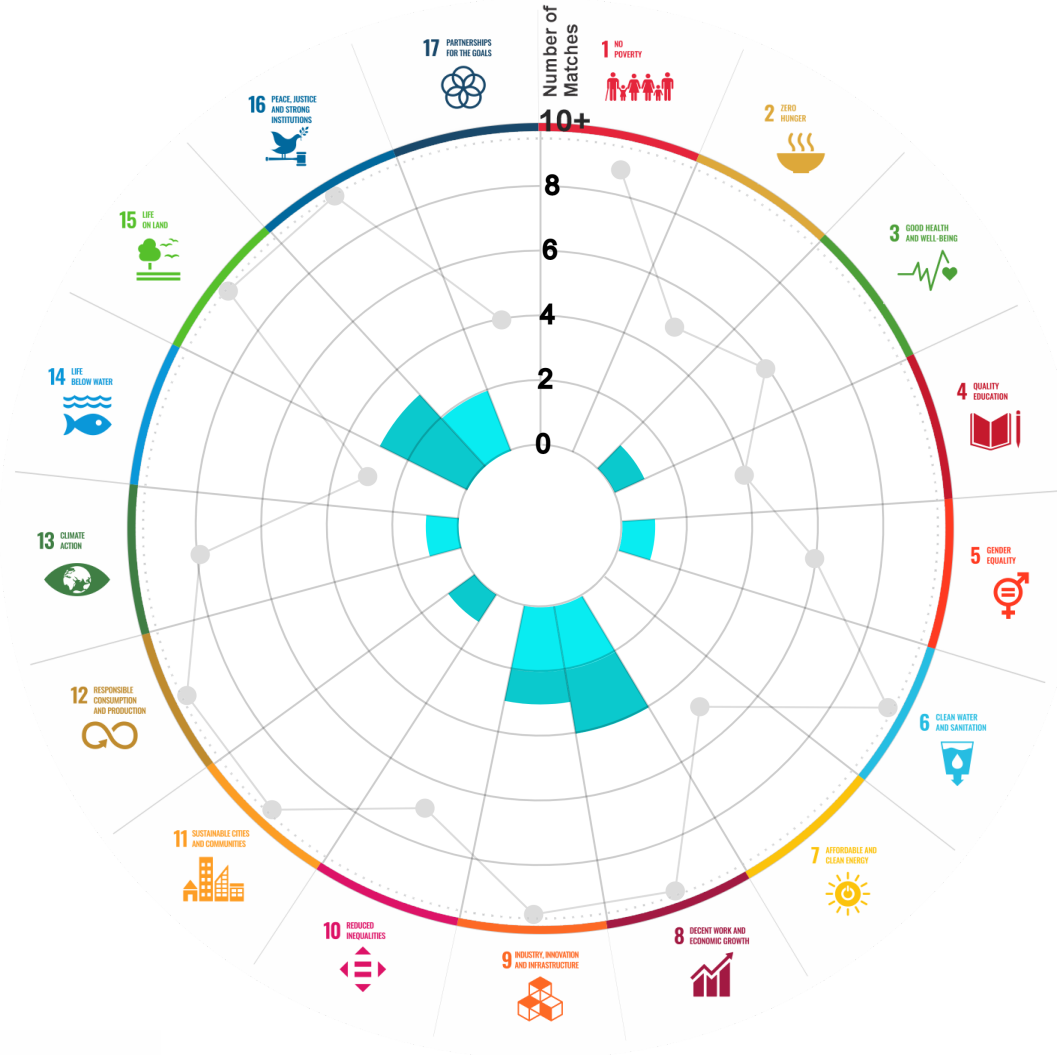
This section aims to present the potential alignment of the infrastructure project with the 17 Sustainable Development Goals (SDGs) of the 2030 Agenda. The relevance of this exercise resides in that it provides information to the actors of the infrastructure ecosystem for decision-making in investment that considers and promotes sustainable development.

Reading guide [View](#)

1. ALIGNMENT BY SUBSECTOR



2. ALIGNMENT BY SDG



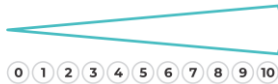
3. ALIGNMENT BY CRITERIA AND TARGETS

[View](#)



Explanation of the alignment of the sustainability criteria and the SDGs.

[View](#)



The tonality of the bars represents the level of detail of the information available from the IDB criteria and its potential alignment for each SDG, based on the scale: N.A., TIER 1, TIER 2 or TIER 3.

Number of times the project information coincides with the alignment of the IDB criteria and the SDGs.

Approximate reference to the number of maximum alignments a project can have between the IDB criteria and the targets of the SDGs.

P R O J E C T

DESIGN, CONSTRUCTION, EQUIPMENT, INSTALLATION, OPERATION AND MAINTENANCE OF THE GAS PIPELINE "TUXPAN - TULA" LOCATED IN THE STATES OF VERACRUZ, PUEBLA AND HIDALGO.

SECTOR: HYDROCARBONS
SUBSECTOR: MIDSTREAM

Type of Investment: Greenfield

Short Name of the Project: 0766 CFE: Tuxpan – Tula Gas Pipeline

Contract Currency:
US Dollars USD

Estimated Investment MXN
\$ 9,434,800,000

Estimated Investment USD
\$ 458,000,000

Exchange rate (USD/MXN) used by the Ministry of Finance for the economic plan 2023 \$ 20.6

DESCRIPTION

The project consists of the design, equipment, installation, operation and maintenance of a gas pipeline with a capacity of 886 million cubic feet per day (MCFD). The approximate length of the gas pipeline is 283 km and 36 inches diameter.

The Tuxpan - Tula gas pipeline transport natural gas from southern Texas to the plants located in the states of Veracruz, Puebla and Hidalgo.

Contract Scope: Design, Construction, Equipment, Installation, Operation, Maintenance

Type of Project: Public / Private

Selection Process: International Open Tender

Term: 25 years

Type of Contract: Provision of services

Payment Source: Rate

Asset (s): Gas Pipeline 283 KM

GEOLOCATION



SPONSOR

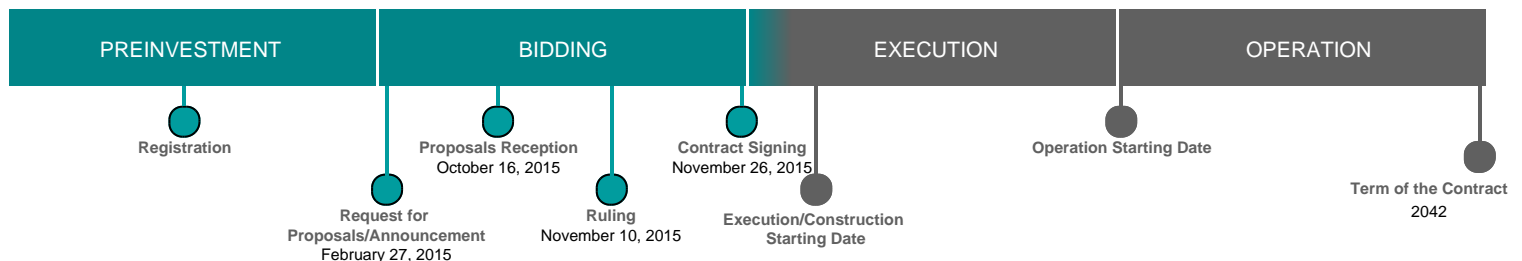
Entity

Comisión Federal de Electricidad

Department

Subdirección de Negocios No Regulados

TIMELINE



Email: proyectosmexico@banobras.gob.mx



SHCP
SECRETARÍA DE HACIENDA
Y CRÉDITO PÚBLICO

BANOBRAS
BANCO NACIONAL DE OBRAS
Y SERVICIOS PÚBLICOS S.N.C.